

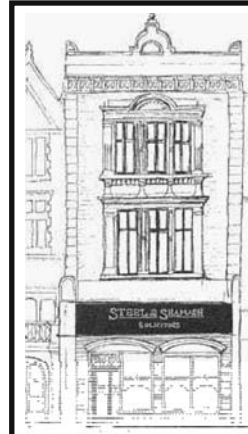
THIS MONTH: Wartime Farm in GMH Park p3 • Free open-air theatre at The Scoop p6
 Southwark Cathedral Uncovered p4 • Bankside Urban Sages p3 • London Bridge Unseen p4

August 2010

in SE1

Issue 146

FREE



STEEL & SHAMASH

THE WATERLOO COMMUNITY SOLICITORS

We can help with all your legal problems

- Family
- Children
- Housing
- Criminal

For a friendly professional service
 Only two minutes from Waterloo Station

Contact Steel & Shamash
 12 Baylis Road • Waterloo • London • SE1 7AA
 Tel: 020 7803 3999
 Email: mail@steelandshamash.co.uk

Auditions for Old Vic Tunnels show

The Old Vic is urging local residents to audition for its new community show to be staged this autumn in The Old Vic Tunnels underneath Waterloo Station.

Platform – described as a theatrical snapshot of London life in 2010 – is an ambitious new play to be performed and produced by 100 Londoners.

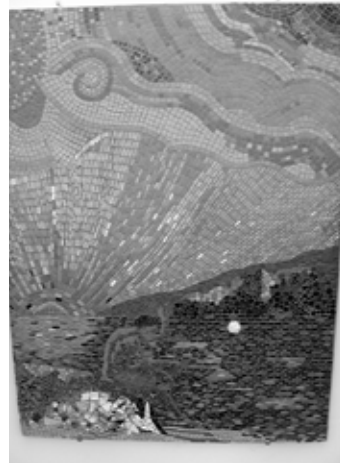
The Old Vic is looking for musicians, actors and dancers aged 16+ to take part in this voluntary project.

Open auditions are taking place on Saturday 7 and Sunday 8 August. Book your audition slot or apply to be part of the backstage crew at www.ovvplatform.com or call 020 7902 7593 to speak to the Old Vic New Voices team.

- On Friday 20 and Saturday 21 August The Old Vic Tunnels are hosting *Dark Carnival: Notes from Underground*, a festival celebrating the theatrical experience.

- www.oldvictbeatre.com

William Blake mosaics at Lincoln's Inn Fields



An exhibition of works created by Waterloo social enterprise Southbank Mosaics can be seen in a pop-up garden outside barristers' chambers in Lincoln's Inn Fields.

The exhibition includes five pieces designed by William Blake – and an 1807 portrait of Blake – that will next year be installed in a railway tunnel at Virgil Street close to Archbishop's Park in North Lambeth. Virgil Street runs parallel to Centaur Street which is already decorated with Blake mosaics. Blake lived for 10 years in nearby Hercules Buildings.

The exhibition at Garden Court Chambers also includes six abstract works – created by young offenders working at Southbank Mosaics – which are for sale at prices ranging from £200 to £1200.

- Visit the pop-up garden on weekdays until mid-September at Garden Court Chambers, 57-60 Lincoln's Inn Fields, WC2A 3LS
- www.southbankmosaics.com

Measurement Shop at E&C

A shop with a difference opens its doors at the Elephant & Castle Shopping Centre this month.

Theatre company Tangled Feet has taken over the former Blackfriars Advice Centre unit next door to the Royal Court's Theatre Local space.

"We've been investigating what the word measurement means, what we measure every day and how we measure it," explains co-director Nathan Curry.

"We're making a theatrical response to measurement and we're putting it in a shop.

"People can wander into the shop and look at how many people in Elephant & Castle are in love, or look at displays about how long the world has been in existence. There will also be bits of performance happening throughout the day about how we measure friendship and success."

Co-director Kat Joyce urges locals to come and join the experiment: "It's going to be an experience where you only need to stay for as long as you are interested or go as far as your curiosity will take you."

• See listing on page 3

FRANK HARRIS and Co
 7620 3400
RESIDENTIAL SALES, LETTINGS and MANAGEMENT
 123 Stamford Street
 London SE1 9NN
020 7620 3400
www.frankharris.co.uk

Controlled ZONE W
 Mon-Fri 8.30 am - 6.30 pm
 Saturday 9.30 am - 1.00 pm

ARLA
 Association of Residential Letting Agents

Looking for a local job?
 Got a local job to advertise?
www.London-SE1.co.uk/classifieds

in SE1

27 Blackfriars Road
London SE1 8NYTel 020 7633 0766
Web www.inSE1.co.uk© 2010 Bankside Press
ISSN 1750-1334 (Print)
ISSN 1750-1342 (Online)Editor
Leigh Hatts
leigh.hatts@banksidepress.com
Production Editor
James Hatts
james.hatts@banksidepress.com
Contributing writer
Marion Marples

Printed by Copyprints Ltd

ADVERTISING

For details of our competitive rates call us for a rate card on 020 7633 0766 or email sales@inSE1.co.uk. You can also download our rate card from www.inSE1.co.uk

SUBSCRIPTIONS

To receive the next 12 issues by post in the UK please send a cheque for £8 to the address above, made payable to 'in SE1'. Please specify starting issue.

LISTINGS INFORMATION

Listings for most types of local event are free; details of events to be considered for inclusion next month should be sent by **Monday 23 August** to se1events@banksidepress.com or by post.

DISCLAIMER

Every effort is made to ensure the accuracy of our listings but all details are subject to alteration by venues and organisers and no responsibility can be accepted for any inaccuracies.

londonSE1
community websiteWe also publish a community website, updated daily with local news and features and a lively discussion forum. Visit it at www.London-SE1.co.uk

[SE1 Direct]

To ensure that you don't miss out on anything that's happening in the area, make sure you receive our weekly email newsletter every Monday. Sign up today by visiting www.SE1direct.co.uk. With more than 7,100 subscribers, can you afford to miss out?

CALL in the YARD

Office Space To Let

180 square feet,
London Bridge
location.Viewing
essential.

Call for details.

Appointment
necessary.Copyprints Ltd
BUSINESS CENTRE
1 Talbot Yard
SE1 1YPwww.copyprintsltd.co.ukPhone 020 7407 2079
Fax 020 7403 5411

This month in brief

Acts for local festival

The Bermondsey Street Area Partnership, organisers of the annual Bermondsey Street Festival, this year to be held on Saturday 18 September, are keen to talk to any local acts, musical or otherwise, who might like a spot during the day in one of the planned performance spaces. Anyone local who wishes to have a very reasonably priced stall is also welcome to get in touch. Alternatively if you want to volunteer in this important local event lots of opportunities will arise in the weeks ahead, and on the day itself. Please contact Greg Battarbee on greg@bermondseystreetfestival.org.uk. More information can be found on www.bermondseystreetfestival.org.uk

Radio 4 Sunday Worship

On Sunday 8 August Radio 4's Sunday Worship will be broadcast from St Thomas' Chapel at St Thomas' Hospital. The service is part of the commemorations for the 100th anniversary of the death of Florence Nightingale. The nursing school's Nightingale Choir will perform work by composer-in-residence John Browne.

Blackfriars Settlement

It will be business as usual at Blackfriars Settlement when they relocate to temporary premises at 90-94 Great Suffolk Street this month. The move will allow work to start on the redevelopment of the charity's Rushworth Street home. The new building will extend across the whole footprint of the site and includes 34 shared ownership homes as well as much-needed modern, accessible facilities for Blackfriars Settlement and the users of its services.

Little Kickers

Little Kickers are running football classes at Haddon Hall Baptist Church in Tower Bridge Road on Saturday mornings. Little Kickers provides children aged 2 to 7 with an early introduction to the fun and excitement of football. Call Berni on 020 7252 1185 or visit www.littlekickers.co.uk

London Triathlon 8 Aug

Southwark & Tower Bridges will be closed on Sunday morning.

Cycle marking sessions

The Metropolitan Police's new Cycle Task Force will be offering cycle marking outside Evans Cycles at London Bridge on Tuesday 10 August between 7.30am and 10am and on Thursday 26 August between 4pm and 7pm. An officer will place a sticker (that can't be easily removed) on the underside of the frame. The frame number will also be registered on a database to make it easier to return your bike to you if it is stolen and then recovered by police.

Guy Fox at Tower Bridge

Exploring Tower Bridge is fun for young visitors this summer with the new Guy Fox Tower Bridge Passport which comes free with every child ticket. The sticker-based passport provides young visitors with an absorbing activity as they make their way around the Tower Bridge Exhibition. It will also provide parents with a structure to help them focus on the most interesting and important aspects of the bridge in a way that is sure to engage attention. Southwark-based Guy Fox History Project is an educational charity that creates innovative activities and publications to encourage children to explore the world around them.

Photo competition

To celebrate David Adjaye's Urban Africa exhibition, the Design Museum and the Stephen Lawrence Charitable Trust have launched a photography competition for budding snappers under 25 to capture something special about their city. The completion deadline is Friday 20 August. Entries should be submitted to urbanphoto@designmuseum.org

Carnaval del Pueblo

This year's Carnaval del Pueblo on Sunday 1 August celebrates the bicentenary of independence for many Latin American countries. The event starts with a spectacular technicolour giant float procession from Elephant Road to Burgess Park from 12 noon. At the park revellers can enjoy regionally-themed food, drink, live music and dance late into the night.

Alex Neil

The London Estate & Letting Agents

www.alexneil.com
0800 822 3449

What's On

August

Comprehensive local listings

Special events

Bankside riverside walkway

Bankside

Until Sunday 12 September

LONDON PEREGRINES AT THE TATE

Daily 12 noon-7pm

RSPB volunteers with telescopes and binoculars will bring these amazing birds closer to the public. The birds perch on the raised brickwork near the top of the Bankside Power Station (Tate Modern) chimney. They are creatures of habit and spend hours on the chimney, making it an ideal point to watch them. Come along, join in and immerse yourself in unexpected wonders of nature in the heart of the city.

→ Full info at se1.net/9228

Bargehouse

Oxo Tower Wharf
www.coinstreet.org

T 020 7401 2255

Sunday 1 August

BEAT THE DRUM TO BAN CLUSTER BOMBS

3pm-4pm; free

Campaigners are mobilising around the world to mark the coming into force on 1 August of the Convention on Cluster Munitions - the most significant disarmament and humanitarian treaty in more than a decade. There will be a public drumming event outside the Bargehouse at Oxo Tower Wharf as London's contribution to the worldwide events.

→ Full info at se1.net/9436

Elephant & Castle Shopping Centre

Elephant and Castle

Monday 2 to Thursday 5 August

THE MEASUREMENT SHOP

Unit 214; 2pm-6pm; free

What if experiencing theatre was as easy as entering a shop? What if a theatrical exchange mirrored a shopping exchange? What if the theatre was an empty shopping unit and the opening times were during the day with no evening performances? Who would the audience be? The Measurement Shop is a creative exploration of how we measure complex and simple things: from the practical (How do we measure the population of London? The rate of immigration? The depth of a river?) to the abstract (how do we measure pain? Recovery? Love?). What effect does measuring have on the measured thing? The project will never be a finished performance, rather an ongoing open exploratory experiment with the audience arriving, measuring and adding to the piece of theatre - it is Tangled Feet's aim that *The Measurement Shop* tours across the UK and opens in cities up and down the country for up to a few weeks before moving on - just like a pop-up shop.

→ Full info at se1.net/9530

Geraldine Mary Harmsworth Park

Lambeth Road

Thursday 12 to Sunday 15 August

Thursday 19 to Sunday 22 August

WARTIME FARM

11am-4pm; free

To coincide with its major exhibition, The Ministry of Food, Imperial War Museum is hosting a wartime farm in

Geraldine Mary Harmsworth Park during the summer holidays. With the help of animals from Surrey Docks Farm, children and families will enjoy hands-on learning about the important roles people like them played in feeding the nation during the Second World War. As well as caring for the animals, kids will be able to try milking (fake!) cows and making butter. They'll also be joined by former Land Girls, evacuees and veterans of Second World War who'll share memories of how women and even children were pulled into the war effort through farming.

→ Full info at se1.net/9103

Melior Street Gardens

Melior Street

Wednesday 4 August

TEAM LONDON BRIDGE FESTIVAL

1pm-4pm; free

The fetes, fairs and street parties of yesteryear helped a generation develop a set of skills that have lain dormant for many years. But now the London Bridge community has the chance to re-live those halcyon days and introduce their children to games such as 'hook the duck' and 'hit the high striker'. Of course, traditionally the art of hooking the duck must be honed while eating candy floss, so Team London Bridge is providing free green candy floss. There will also be a book exchange and the chance for little ones (and older folk with no green fingered ability) to learn about how to grow food from gardening experts.

→ Full info at se1.net/9277

National Theatre

South Bank

www.nationaltheatre.org.uk

T 020 7452 3000

Friday 13 to Saturday 14 August

THE CORSICAN BROTHERS: OR, THE FATAL DUEL

10pm; free

First in a series of live performances of The British Stage in Miniature, blown up to a huge scale and projected onto the flytower. Young Blood lovingly recreates these mini-masterpieces in his outside Corinthian Theatre and his hand-coloured, cut-out figures and scenery burst into life with accompanying music adding a contemporary twist. Boucicault's tragic story of ill-fated twin brothers and a deadly duel in the Forest of Fontainebleau.

Part of [Watch this Space](http://se1.net/9457)

→ Full info at se1.net/9457

Saturday 21 to Sunday 22 August THE BATTLE OF WATERLOO: THE COUNTESS PHEDORA'S CURSE

10pm; free

Second in a series of live performances of The British Stage in Miniature, blown up to a huge scale and projected onto the flytower. Napoleon's defeat at the hands of the Duke of Wellington takes its rightful place overlooking the bridge that bears the name of that famous battle.

Part of [Watch this Space](http://se1.net/9458)

→ Full info at se1.net/9458

Friday 27 to Saturday 28 August BLACKBEARD THE PIRATE: THE JOLLY BUCCANEERS

10pm; free

Last in a series of live performances of The British Stage in Miniature, blown up to a huge scale and projected onto the flytower. Experience swashbuckling high-sea adventures with the infamous Blackbeard - the Captain Jack Sparrow of his day!

Part of [Watch this Space](http://se1.net/9459)

→ Full info at se1.net/9459

Newington Gardens

Harper Road

Saturday 7 August

ROCKINGHAM YOUTH AND COMMUNITY FESTIVAL

12 noon-4pm; free

A celebration of community diversity through a variety of live performance, including traditional Indian dancing, local dance act Bruk Out and local artists X Vocals. Other activities include a children's area, intercultural tent, face painting and bouncy castle. The event is designed as an opportunity for the local community to come together and celebrate its diversity and improve community cohesion. The festival will also have stalls from service providers, with information on aspects such as employment and opportunity to take part in a multi-media workshop. Free food and drink will also be provided.

→ Full info at se1.net/9441

Potters Fields Park

Tooley Street

www.pottersfields.co.uk

Wednesday 4 August

SCRAPSTORES UK LAUNCH

10am-2pm; free

Join new charity Scrapstores UK for their official launch on Playday. Children and families, local and from afar, are welcome to get out and play in a scrapstore extravaganza. Scrapstores UK has been set up to support the reuse of unwanted resources for the benefit of children and communities. Clean reusable scrap materials (which businesses find hard to recycle so would otherwise be landfilled) are available for children to play with in a network of 100 'scrapstores' across the UK. All sorts of fabrics, paper, card and plastics in a kaleidoscope of colours, textures and shapes will be available. Families are encouraged to bring a picnic to this free event and get stuck in to celebrate Playday 2010.

→ Full info at se1.net/9531

Rose Theatre Exhibition

56 Park Street

www.rosetheatre.org.uk

Saturday 31 July & Sunday 1 August

FESTIVAL OF BRITISH ARCHAEOLOGY

11am-6pm; free

Visit the site of Bankside's first Elizabethan theatre, where Shakespeare and Marlowe learnt their craft and Edward Alleyn performed. Built by Philip Henslowe in 1587.

→ Full info at se1.net/9298

Royal Festival Hall

Belvedere Road

www.southbankcentre.co.uk

T 0871 663 2501

Saturday 14 to Sunday 15 August

RECYCLING BRAZIL

Level 2 Green & Blue Sides; 10am-1pm;

free

Make, create and experiment with fabric and found materials. Led by a team of London based Brazilian artists discover the imaginative ways Brazilians recycle everyday materials to create new funky new reusable objects inspired by the work of The New Decor and Ernesto Neto at the Hayward Gallery.

→ Full info at se1.net/9213

Southbank Centre Square

Belvedere Road

www.southbankcentre.co.uk

Friday 6 to Sunday 8 August

REAL FOOD MARKET

Fri 11am-8pm; Sat 10am-6pm; Sun 12

noon-6pm

On the first weekend of each month 40 selected Real Food Festival producers

come to the South Bank bringing Londoners the opportunity to buy great quality, fresh produce and ingredients at affordable prices, direct from the producer. The local community will have a regular place to come and buy seasonal, nutritionally-dense real food to take home and cook with.

→ Full info at se1.net/9396

The Cut

Tuesday 10 August

PHOTO SHOOT FOR LIVING STREETS

9am-5.30pm

Living Streets - the national charity working to create safe, attractive and enjoyable streets around the UK - is holding a charity photo shoot to get inspiring imagery of ordinary people using a pedestrian-friendly environment in their local area. They are inviting people from the SE1 area to come and be photographed. Everyone is invited. Living Streets needs people of all ages, shapes, sizes, and ethnicities. (Any aspiring models, actors, performers are more than welcome!) Free portrait photos will be sent to all participants. If you would like to take part or would like more information, please send an email to: adwoa.baah@livingstreets.org.uk or call 020 7377 4900.

→ Full info at se1.net/9423

Union Street Urban Orchard

100 Union Street

Wednesday 25 August

BANKSIDE URBAN SAGES

4.30pm

This September the Architecture Foundation will collaborate with a group of local people aged 65 and over to explore the public realm in Bankside through a series of creative workshops. Activities take place from 6-10 September in Bankside and will include urban birding, architecture, planting and illustration, and will culminate in a public celebration event at the end of the week. To find out more and sign up for the programme, join the organisers for tea at the Union Street Urban Orchard. For more information or to register your interest, please email laura@architecturefoundation.org.uk or phone 020 7084 6767.

→ Full info at se1.net/9506

Children & family

East Street Library

168-179 Old Kent Road

T 020 7703 0395

www.southwark.gov.uk/libraries

Tuesday 3 August

ALIEN INVADERS

2.30pm-3.30pm; free

Make an alien mask and alien hand that could invade our planet. For ages 5-12.

→ Full info at se1.net/9493

Tuesday 10 August

MINI GALACTIC MONSTERS

2.30pm-3.30pm; free

Craft activity to make an alien or robot. For ages 5-12.

→ Full info at se1.net/9494

Tuesday 17 August

INTER-PLANETARY ADVENTURE

2.30pm-3.30pm; free

Make a space mobile. Re-create planets or invent your own. For ages 5-12.

→ Full info at se1.net/9495

Thursday 19 August

OUT OF THIS WORLD GAMING

2.30pm-3.30pm; free

Show your skill on the Nintendo Wii in some intergalactic adventures! For ages 5-12.

→ Full info at se1.net/9496

Tuesday 31 August

ULTIMATE UFOS

2.30pm-3.30pm; free
Craft activity to make an UFO or alien spaceship. For ages 5-12.
→ Full info at se1.net/9497

HMS Belfast

Morgans Lane, Tooley Street T 020 7940 6300
hmsbelfast.iwm.org.uk

SHIPSHAPE SCIENCE SUMMER FUN!

11am-1pm & 2pm-4pm; £12.95, senior citizen and student conc available; under-16s free
As part of the celebrations for its 350th anniversary, the Royal Society has partnered with HMS Belfast who will be holding drop-in family science workshops during the summer holidays. These will complement and enhance the story of ship building as told in the *Launch!* exhibition, allowing visitors to explore for themselves some of the science behind ships in a fun and hands on way.
→ Full info at se1.net/8913

SUMMER STOWAWAYS TRAIL

During the ship's time at sea it visited many exotic and interesting parts of the world, though it appears that several small furry stowaways have managed to sneak on board. Search the ship and find all ten, along the way discover where HMS Belfast was in the world when they stowed away.
→ Full info at se1.net/8745

Imperial War Museum

Lambeth Road T 020 7416 5000
london.iwm.org.uk

Sunday 1 to Wednesday 11 August
Monday 16 to Wednesday 18 August
Monday 23 to Tuesday 31 August

MRS SEW & SEW CLASSES

11am-4pm; free
'Make do and Mend' at a series of all-ages sewing classes hosted by the museum this summer. Visitors inspired by the thrifty wisdom of the 1940s can try their hand at cross stitching, quilt making and needle craft with the guidance of Imperial War Museum staff.
→ Full info at se1.net/9477

Old Operating Theatre, Museum and Herb Garret

9a St Thomas Street T 020 7188 2679
www.thegarret.org.uk

SIR HANS SLOANE: THE ODYSSEY OF CHOCOLATE WORKSHOP

2pm; £5.60; conc £4.60; child £3.25; family (2+4) £13.75
Did you know that chocolate was once used as a currency? That one of Britain's most famous physicians discovered and imported chocolate? Give yourself a bittersweet treat, come and join a workshop and a talk on chocolate and its properties in the atmospheric garret. The Old Operating Theatre is celebrating the 350th anniversary of the birth of Sir Hans Sloane, an entrepreneur, physician, philanthropist, botanist ... and a chocolate lover.
→ Full info at se1.net/8435

THE GORE TOUR: THE HOUSE OF INSTRUMENTS

3pm & 4pm; £5.60; conc £4.60; child £3.25; family (2+4) £13.75
Hands on surgery! A tour of the museum via instruments of the most horrible surgical procedures... For ages 12+
→ Full info at se1.net/9465

Shortwave Cinema

10 Bermondsey Square T 020 7357 6845
www.shortwavefilms.co.uk

FINDING NEMO: KIDS' CLUB SCREENING

11am; £4 per child, with an accompanying adult going free
Clownfish Nemo is carried away from his home in Australia's Great Barrier Reef. His overprotective father, Marlin and friendly but forgetful Dory, go to his rescue. The two embark on an adventure that leads to encounters with a range of colourful characters. Academy Award-winning film from creators of *Toy Story*.
→ Full info at se1.net/9505

Southwark Cathedral

London Bridge T 020 7367 6700
www.southwarkcathedral.org.uk

SOUTHWARK CATHEDRAL UNCOVERED: ANGELS AND ANIMALS

11am; £3 per adult; accompanying children free
This will be a family-orientated safari taking you to the heavenly realm of angels. A snail, lion, porcupine, and a dolphin are all portrayed within the building. There are more mammals, birds, and animals than angels to uncover.
→ Full info at se1.net/9208

Public meetings**More London Riverside**

2a More London Riverside
www.morelondon.com

RIVERSIDE SAFER NEIGHBOURHOODS MEETING

7pm-8.30pm
An opportunity to hear a presentation from the Met Police on their activities in the Riverside Ward (from London Bridge to Southwark Park Road between the Thames and railway line), and to contribute to agreeing the ongoing priorities for police action. Info: colinhp@btinternet.com 020 7237 6035
→ Full info at se1.net/9444

Talks & literature**Calder Bookshop**

51 The Cut T 020 7620 2900
www.oneworldclassics.com

THE SPANISH CIVIL WAR AND ITS LITERATURE

7pm; £6 (conc £4)
John Calder presents readings from and about the conflict that ravaged Spain between 1936 and 1939 and resulted in the triumph of fascism under General Franco.
→ Full info at se1.net/9414

Old Operating Theatre, Museum and Herb Garret

9a St Thomas Street T 020 7188 2679
www.thegarret.org.uk

VAMPIRES AND WEREWOLVES AMONG US? LEGENDS AND SCIENTIFIC REALITY

6.30pm; £6
Led by bioarchaeologist and palaeopathologist Anastasia Tsaliki. Due to recent TV shows and films such as the *Twilight Saga* there is an increased popular interest in vampires and shape-shifters. This talk will explore the fascinating origins and the folklore of the vampires and the werewolves, but it will also study the reality behind these legends from an archaeological and medical viewpoint. Who were those accused and tried of vampirism or lycanthropy through history? Where did they live? Who was Dracula? Are there real vampires? Come along to find out, but beware as this talk is not suitable for the faint-hearted and those under 15!
→ Full info at se1.net/9463

ENLIGHTENMENT SURGERY

6.30pm; £6
William Cheselden who could cut for the stone in 54 seconds! Samuel Sharpe, the eye surgeon who could cut out your cataracts! A talk about the rise of the scientific surgeon in the 18th century and the end of the Barber Surgeons Company. Hear about some of the surgeons who joined the Royal Society and worked to elevate the status of the profession, their practice of the science of anatomy, the operations they developed and the instruments of surgery that they used. Suitable for over 15s.
→ Full info at se1.net/9464

THE HERBS OF THE DARK ART: HERBS & WITCHCRAFT

3pm; £5.60; conc £4.60
There has always been a strong fascinating relationship between herbs,

folklore and even witchcraft in English countryside and in the rest of the world. Wise women and shamans often took the role of doctors in tribes and small rural villages using herbal remedies to cure physical and supernatural afflictions. From the mandrake's scream to witches unguent join this talk on medicine and magic among the smells and spells of the atmospheric garret. For ages 15+
→ Full info at se1.net/9466

Southwark Cathedral

London Bridge T 020 7367 6700
www.southwarkcathedral.org.uk

SOUTHWARK CATHEDRAL UNCOVERED: ACTORS AND WRITERS

11am; £3
Whilst many will know of the cathedral's connection with William Shakespeare, there are many other associations with actors and writers - these and the periods in which they lived and worked will be recalled by Chris Jenkins. Part of the 'Southwark Cathedral Uncovered' series of themed tours. Cathedral guides will recall those commemorated within the building and uncover the rich and colourful history of the church and area through its monuments, tombs, windows, and artefacts. No booking necessary. All tours will commence in the Nave.
→ Full info at se1.net/9205

SOUTHWARK CATHEDRAL UNCOVERED: MEDICAL LINKS & DEVELOPMENTS THROUGHOUT THE AGES:

11am; £4 (inc £1 donation to Guy's Chapel)
Tour led by Jo Brewster. The cathedral's forefathers founded St Thomas' hospital and a nursing sister became the first deaconess of the diocese. There are several other medical links and these, together with a visit to the nearby Guy's Chapel, make this an interesting and informative tour.
→ Full info at se1.net/9206

SOUTHWARK CATHEDRAL UNCOVERED: GOD'S ADVERTS: STAINED GLASS

11am; £3
Which artist had a strawberry as his trademark? What links glass manufacturing to philately? Which window caused controversy within the Victorian church? All will be revealed in this in-depth look at the stained glass within the Cathedral led by Doreen Brooker.
→ Full info at se1.net/9207

SOUTHWARK CATHEDRAL UNCOVERED: SOUTHWARK & THE NEW WORLD

2pm; £3
There are several links with our cousins over 'The Pond'. These, and the stories relating to them, will be recalled by Neil Sinclair. Cathedral guides will recall those commemorated within the building and uncover the rich and colourful history of the church and area through its monuments, tombs, windows.
→ Full info at se1.net/9209

SOUTHWARK CATHEDRAL UNCOVERED: LET US FORGET - MILITARY AND WARFARE CONNECTIONS

11am; £3
Revd Neil Smith recalls those who have died for their faith, and gives thanks to those who have gone before us who fought and defended our freedoms against tyranny and dictatorship. The tour also acknowledges innocent bystanders caught up in acts of terrorism.
→ Full info at se1.net/9210

Music**1901 Arts Club**

7 Exton Street T 020 7620 3055
www.1901artsclub.com

SPANISH & ARGENTINIAN SONGS

7pm; free; advance booking required
www.1901artsclub.com
Mezzo soprano Nerea Berraondo and pianist Juan Urdániz present a free recital of Spanish and Argentinian songs.
→ Full info at se1.net/9526

Guided walks**Blitzwalkers**

www.blitzwalkers.co.uk

Sunday 8 August

OLD SOUTHWARK IN THE BLITZ

Meet 11am in Southwark Cathedral south churchyard; £7
Neil Bright leads a walk tracing the story of old Southwark during the Blitz. Hear some of the tales of heroism and tragedy of local folk. Duration: 2.5 hours. Finishes at Geraldine Mary Harmsworth Park.
→ Full info at se1.net/9450

Sunday 22 August

WATERLOO, ALDWYCH & THE WESTERN CITY OF LONDON IN THE BLITZ

Meet 11am by bus stops on Tenison Way, Waterloo Station; £7
Hear some of the tales of heroism and tragedy of local folk on this guided walk with Neil Bright Duration: 2.5 hours. Finishes at Blackfriars Bridge.
→ Full info at se1.net/9451

Living Memory Heritage Project

www.coinstreet.org

Thursday 12 August

ALONG THE SOUTH BANK

5.30pm; free; booking essential 020 7021 1600 or l.cowell@coinstreet.org
Hour-long local history walk.

Saturday 14 August

AROUND BLACKFRIARS ROAD

10.30am; free; booking essential 020 7021 1600 or l.cowell@coinstreet.org
Hour-long local history walk.

Tuesday 24 August

AROUND STAMFORD ST & THE CUT

11am; free; booking essential 020 7021 1600 or l.cowell@coinstreet.org
Hour-long local history walk.

The Sock Mob

www.sockmobevents.org.uk

Friday 6 to Sunday 29 August

LONDON BRIDGE UNSEEN TOURS

Wed- Fri 7pm; Sat & Sun 4pm; meet outside Tooley Street exit of London Bridge tube station; £5
Unseen Tours provide a totally unique and exciting perspective on well-known landmarks and the lesser-known nooks and crannies of London. Led by homeless guides with their own distinctive styles and life histories, each walk will have its own personality as it uncovers London's hidden history and present-day reality from their perspectives. This tour follows the artery of the Thames from London Bridge along the south bank, veering off into Borough's more mysterious alleys that also contain powerful symbols of the outcast and social justice.
Part of [London Festival Fringe](http://www.londonfestivalfringe.com)
→ Full info at se1.net/9445

St George's Garden

Tabard Street

Thursday 5 & 12 August

FROM GARDEN TO GARRET: THE APOTHECARY TOUR

2pm; £5.80 (conc £4.80)
An Apothecary Tour exploring the historical use of medicinal plants. The tour starts within the fresh herb garden of St George the Martyr Church Southwark where the medicinal herbs of the Herb Garret are now planted. There will then be a short walk to the oak beamed Herb Garret of old St Thomas' Hospital where there will be a hands on demonstration of traditional medicinal preparations. Explore St Thomas' and Guy's Hospitals' pharmaceutical history via the herbal arts of infusion, poultice, pills and tablet making.
→ Full info at se1.net/9461

Theatre

Elephant & Castle Shopping Centre

Elephant and Castle

Wednesday 25 to Saturday 28 August
SPUR OF THE MOMENT

Theatre Local, Unit 215; Wed-Sat 7pm;
Sat 4pm; £8 (conc £5)

Fourth in a season of plays presented in an empty shop unit by the Royal Court Theatre. Pre-teen Delilah enjoys High School Musical, swim parties and ogling the lodger. Whilst her parents throw verbal grenades at one another, they barely notice their 21 year old tenant starting to notice her. Spurr of the Moment looks at the distance between close family relations and a young girl on the brink of adolescence. It is the debut play by Anya Reiss, written when she was 17.

→ Full info at se1.net/8536

Marlborough Playground

Union Street

Thursday 26 August to Saturday 18 September

OIKOS

The Jellyfish Theatre; 8pm; £10 & £13;
tickets from www.se1.net/9527

First play to be performed in temporary new theatre on Union Street. New play by Simon Wu, directed by Tophér Campbell and designed by Bernadette Roberts. Salil, a highly-successful businessman, has it all worked out: career, family, river-view des-res in Chiswick and a beautiful mistress. So why is he increasingly haunted by ghosts from the Old Country? When the Thames bursts its banks and his family scramble to keep their heads above water, the very foundations of his perfect life are threatened and Salil is forced to look to both his future and his past for redemption.

• SE1 residents can apply for free tickets for a performance on Saturday 28 August at 3pm

→ Full info at se1.net/9527

Menier Chocolate Factory

51 Southwark Street T 020 7907 7060
www.menierchocolatefactory.com

Until Saturday 11 September
ASPECTS OF LOVE

Tue-Sat 8pm; Sat & Sun 3.30pm; TBA
Trevor Nunn directs the first major London revival of Andrew Lloyd Webber, Don Black and Charles Hart's musical.

→ Full info at se1.net/8721

National Theatre

South Bank T 020 7452 3000
www.nationaltheatre.org.uk

Until Wednesday 11 August
AFTER THE DANCE

Lyttelton Theatre; In repertoire; £10-£38
First staged in 1939, the play now often thought to be Terence Rattigan's masterpiece offers a subtle, witty unmasking of the hedonistic 20s generation and a devastating study of repression and the human heart.

→ Full info at se1.net/8642

Until Sunday 12 September

WELCOME TO THEBES

Olivier Theatre; In repertoire; £10-£30
Richard Eyre directs a new play by Moira Buffini. A passionate exploration of an encounter between the world's richest and poorest countries, set in the aftermath of a brutal war.

→ Full info at se1.net/8946

Until Tuesday 21 September

THE HABIT OF ART

Lyttelton Theatre; In repertoire; £10-£42.50

A new play by Alan Bennett directed by Nicholas Hytner.

→ Full info at se1.net/7627

Until Wednesday 22 September

EARTHQUAKES IN LONDON

Cottesloe Theatre; In repertoire; £10-£32

A new play by Mike Bartlett directed by Rupert Goold. A rollercoaster of a play from 1968 to 2525 and back again.

→ Full info at se1.net/8948

Until Thursday 14 October

DANTON'S DEATH

Olivier Theatre; In repertoire; £10-£30
Michael Grandage direct a new version of Georg Buchner's play by Howard Brenton. With its hair-raising rush of scenes and vivid dramatisation of complex, visionary characters, *Danton's Death* has a claim to be the greatest political tragedy ever written.

→ Full info at se1.net/8947

Rose Theatre Exhibition

56 Park Street
www.rosetheatre.org.uk

Thursday 5 to Sunday 29 August

PAWNOGRAPHY

7.30pm (performances on selected dates only); £10 (conc £8) from 020 7261 9565 or boxoffice@rosetheatre.org.uk

As the curtains close on Juliet's story in this world, they open to another: The star crossed lover's journey through purgatory, a realm ruled by the Marquis de Sade. Will this new tale make for a heavenly ending? Or is Juliet doomed to a hellish ever after. Pawnography explores the ambiguity of *amore* and its relation to mortality.

Part of [London Festival Fringe](http://LondonFestivalFringe)
→ Full info at se1.net/9261

Friday 13 to Tuesday 31 August

BURIED ALIVE

7.30pm (performances on selected dates only); £10 (conc £8) from 020 7261 9565 or boxoffice@rosetheatre.org.uk

Stewart Reid is an award-winning photo-journalist, with a past he would prefer to keep hidden. When an ambitious female journalist tries to uncover the mysteries of his past, Stewart is forced to face his family's darkest secrets, which he would rather keep buried forever. By Philip Osment.

→ Full info at se1.net/9262

Shakespeare's Globe

New Globe Walk T 020 7401 9919
www.shakespeares-globe.org

Until Saturday 21 August

HENRY VIII

In repertoire; £5-£32
Mark Rosenblatt directs the rarely performed Henry VIII which was

responsible for burning down the original Globe. Henry VIII is played by Dominic Rowan who has recently been seen in *The Misanthrope* following his celebrated performance as Touchstone in the Globe's 2009 production of *As You Like It*. With period staging and costume.

→ Full info at se1.net/8223

Until Saturday 21 August

ANNE BOLEY

In repertoire; £5-£32
Howard Brenton makes a return to the Globe. This play dramatises the life and legacy of Henry VIII's notorious second wife - exploring both her passion for the King and her love of the most dangerous ideas of her day. John Dove returns to the Globe to direct this production.

→ Full info at se1.net/8226

Until Saturday 2 October

HENRY IV PART 1

In repertoire; £5-£32
The play is performed for the first time at the replica of the Bankside playhouse. Dominic Dromgoole directs Jamie Parker as Prince Hal and William Gaunt as Worcester and Shallow. With Renaissance staging and costume.

→ Full info at se1.net/8224

Saturday 14 August to Saturday 2 October

THE MERRY WIVES OF WINDSOR

In repertoire; £5-£32
A revival of the Globe's acclaimed 2008 production directed by Christopher Luscombe. With Renaissance costume and settings. Many of the 2008 cast will return, including Christopher Benjamin as Falstaff, Serena Evans as Mistress Page, Sarah Woodward as Mistress Ford and Andrew Havill as Frank Ford. Joining the 2010 production is *Hollyoaks* actor Gerard McCarthy as Fenton, Barnaby Edwards as Rugby and Ceri-Lyn Chissone as Anne Page.

→ Full info at se1.net/8227

Until Sunday 3 October

HENRY IV PART 2

In repertoire; £5-£32
The play is performed for the first time at the replica of the Bankside playhouse. Dominic Dromgoole directs Jamie Parker as Prince Hal and William Gaunt as Worcester and Shallow. With Renaissance staging and costume.

→ Full info at se1.net/8225

Shunt Bermondsey Street

42-44 Bermondsey Street
www.shunt.co.uk

Until Saturday 25 September

MONEY: A SHUNT EVENT

Tue-Sat 7.30pm; Thu/Fri/Sat 9.45pm; £20
Money takes place in an extraordinary three-storey set built in the centre of an empty warehouse in Bermondsey Street. The audience is led inside, where the action unfolds around, above and below them. Inspired by Zola's novel *L'Argent* which was in turn inspired by a 19th century French banking fiasco. Prepare for fractured narrative, electrifying imagery and all-out sensory assault.

→ Full info at se1.net/7669

Southwark Playhouse

Shipwright Yard T 020 7407 0234
www.southwarkplayhouse.co.uk

Until Saturday 7 August

SCHILLER'S INTRIGUE/LOVE

7.30pm; £8/£13/£18
A new version by Daniel Millar and Mark Leipacher. A potent mix of tragedy and comedy with echoes of both *Romeo & Juliet* and *Tartuffe*, Schiller's early masterpiece is unleashed in this fresh and urgent new translation specially commissioned by the faction theatre co. to commemorate the 250th anniversary year of Schiller's birth.

→ Full info at se1.net/9302

Monday 9 to Saturday 28 August

LOPE DE VEGA'S FUENTE OVEJUNA

Mon-Sat 7.30pm; Sat 3pm; £8/£13/£18
In 1472 the villagers of Fuente Ovejuna stood up to a tyrant and inspired a nation. Famous for its revolutionary fervour and bucolic joy, *Fuente Ovejuna* is one of the great masterpieces of the Spanish Golden Age. Performed with an eleven strong ensemble on a bare stage, a live band every night and an irreverent selection of props including frisbees, water-bombs and toilet fresheners. Written and directed by Daniel Goldman for Tangram Theatre Company.

→ Full info at se1.net/9529

The Miller

96 Snowsfields
www.themiller.co.uk

Thursday 26 August

THE FOLD UP SKETCH SHOW

7.30pm; £5
Fold Up Theatre's first foray into sketch comedy.

→ Full info at se1.net/9524

The Old Vic

103 The Cut T 0870 060 6628
www.oldvictheatre.com

Until Saturday 21 August

THE TEMPEST

In repertoire with *As You Like It*; £7.50-£47

Tickets: www.inSE1.co.uk/tickets/8491
Sam Mendes returns to direct year two of The Bridge Project, with another stellar transatlantic lineup including Michelle Beck, Christian Camargo, Ron Cephas Jones, Stephen Dillane, Juliet Rylance and Thomas Sadoski in an intriguing pairing of Shakespeare's pastoral comedy *As You Like It* and his late masterpiece *The Tempest*.

→ Full info at se1.net/8491

Until Saturday 21 August

AS YOU LIKE IT

In repertoire with *The Tempest*; £7.50-£47

Tickets: www.inSE1.co.uk/tickets/8492
Sam Mendes returns to direct year two of The Bridge Project, with another stellar transatlantic lineup including Michelle Beck, Christian Camargo, Ron Cephas Jones, Stephen Dillane, Juliet Rylance and Thomas Sadoski in an intriguing pairing of Shakespeare's pastoral comedy *As You Like It* and his late masterpiece *The Tempest*.

→ Full info at se1.net/8492

Join us on
Facebook
& Twitter

facebook.com/londonse1
twitter.com/se1

for the very latest
local news, events
and trivia

ADVERTISE HERE
NEXT MONTH

020 7633 0766
sales@inSE1.co.uk

ELECTRICIAN
No job too small!
07850 767283
020 8761 6012
angelo@glennies.net



ESOL Citizenship course
Life in the UK Test
City & Guilds certificate



Weekend courses for those applying for British Citizenship.

UK history, government and laws
Religious and ethnic diversity, role of women
Language courses, Citizenship test information
Help and information sources

Contact: Alan Goran
0770 204 4285
alan.goran@rainbowlearningltd.co.uk
www.rainbowlearningltd.co.uk

Wednesday 4 August to Sunday 19 September

JESS FLOOD-PADDOCK: GANGSTA'S PARADISE

Project Space; ; free
In her first solo exhibition at a major institution, the British artist Jess Flood-Paddock presents a sculptural scenario featuring a lobster, a sprinter's autobiography, an invitation to dinner, some possible cannibals, some giant rabbits, and the end of the world.
→ Full info at se1.net/9532

Imperial War Museum

Lambeth Road T 020 7416 5000
london.iwm.org.uk
Daily 10am-6pm; free

Until Sunday 5 September

OUTBREAK 1939
This exhibition marks the seventieth anniversary of the outbreak of the Second World War, exploring the build-up and preparations for war, an hour-by-hour countdown of events on 3 September 1939 and a look at the early months of the conflict.
→ Full info at se1.net/6283

Until Sunday 31 October

HORRIBLE HISTORIES: TERRIBLE TRENCHES
£4.95 (conc £3.95, child £2.50, family ticket £13) from 020 7416 5439
A family exhibition based on the Trenches Handbook, one of the books by Terry Deary in the bestselling Horrible Histories series.
→ Full info at se1.net/6282

Until Monday 4 January

THE MINISTRY OF FOOD
£4.95 (conc £3.95, child £2.50, family £13)
How the British public adapted to a world of food shortages by 'Lending a Hand on the Land', 'Digging for Victory', taking up the 'War on Waste', and being both frugal and inventive on the 'Kitchen Front'.
→ Full info at se1.net/8110

Jerwood Space

171 Union Street T 020 7654 0171
www.jerwoodspace.co.uk
Mon-Fri 10am-5pm; Sat & Sun 10am-3pm; free

Wednesday 11 August to Sunday 12 September

LOCATE
Featuring the work of artists Mel Brimfield, Sarah Pickering and Aura Satz, Locate will exhibit three new commissions exploring the artists' responses to the idea of 'site'.
→ Full info at se1.net/8930

Llewellyn Alexander Fine Paintings

124-126 The Cut T 020 7620 1322
www.llewellynalexander.com
Mon-Sat 10am-7.30pm; free

Until Saturday 21 August

NOT THE ROYAL ACADEMY: A SALON DES REFUSÉS
What happens to the paintings not hung at the Royal Academy? Find out by visiting this constantly changing exhibition of some of the best of the work rejected by the 2010 Summer Exhibition at the Royal Academy. Many

new artists exhibiting for their first time in London.

→ Full info at se1.net/8992

Friday 27 August to Friday 17 September

SOCIETY OF FELINE ARTISTS
Work by more than 50 members and associate members of this prestigious society who all specialise in the painting of cats.
→ Full info at se1.net/8993

Master Piper

67-69 Kennington Road T 020 7401 9599
www.masterpiper.com
Wed-Fri 12 noon-6pm, Sat-Sun 12 noon-5pm by appointment; free

Until Friday 17 September

REGINALD S. ALOYSIUS
British Sri Lankan artist based in London. His detailed pencil drawings of Indian Hindu temples coupled with a sensuous and delicate use of enamel paint creates an alluring relationship between drawing and painting. Each work is embellished with intricate carvings of modernist architectural shapes and aircraft flight plans; a scarring that mirrors the irreparable change that an evolving society can have on ancient tradition.
→ Full info at se1.net/9486

Menier Gallery

51 Southwark Street T 020 7407 3222
www.meniergallery.co.uk
Mon-Sat 10am-6pm; free

Until Friday 6 August

PAINTINGS IN HOSPITALS: COLOURING IN THE CLINICAL
This summer, Paintings in Hospitals celebrates the launch of its bright new logo with a two-floor exhibition of some of the most bold, colourful and contemporary works in its collection.
→ Full info at se1.net/9272

National Theatre

South Bank T 020 7452 3000
www.nationaltheatre.org.uk
Foyers open Mon-Sat 9.30am-11pm; Sun 12 noon-6pm; free

Until Sunday 15 August

INFINITE VARIETY
Curated by actress Harriet Walter, this exhibition celebrates the beauty of the ageing female face.
→ Full info at se1.net/8943

Until Sunday 12 September

THE PRESS PHOTOGRAPHER'S YEAR 2010
The only competition that showcases the outstanding photography commissioned for and used in the UK media.
→ Full info at se1.net/8944

Thursday 19 August to Sunday 19 September

SE1 9PX: HIDDEN CORNERS
With the aid of the technicians, actors and craftspeople who inhabit them, Miriam Nabarro has sought out secret spaces at the National Theatre and presents an exhibition of photographs that will surprise and intrigue.
→ Full info at se1.net/9508

Nolia's Gallery 2

60 Great Suffolk Street T 020 7701 9111
www.noliassgallery.co.uk

Friday 6 to Tuesday 10 August

SCENES FROM THE CITY
Fri-Mon 1pm-6pm; Tue 11am-3pm; free
Theatre company Broken Glass presents a collaborative art, literature and theatre project. Taking you on a magical and surreal journey, *Scenes from the City* follows a shifting perspective of everyday life, turning the mundane and the prosaic into something extraordinary. Part of London Festival Fringe
→ Full info at se1.net/9488

Queen Elizabeth Hall

Southbank Centre, Belvedere Road
www.southbankcentre.co.uk

Until Thursday 30 September

WALLSTRIP
Twins Fabio Moon and Gabriel Ba are the hottest comic book artists in Brazil. In collaboration with local young people and artists, they have made a wall-sized comic strip alongside QEH.
→ Full info at se1.net/9374

Royal Festival Hall

Belvedere Road T 0871 663 2501
www.southbankcentre.co.uk
Foyers daily 10am-11pm; free

Until Monday 30 August

PROJECT MORRINHO: SOUTHBANK CENTRE FAVELA
Riverside Terrace
An outdoor favela made in collaboration with members of Lambeth's Portuguese speaking community.
→ Full info at se1.net/9375

Until Sunday 5 September

UNTOLD STORIES
Spirit Level
A striking series of portraits of young people wearing headdresses made from recycled materials, and inspired by Rio Carnival and their favourite landmarks of London and Rio de Janeiro.
→ Full info at se1.net/9533

Until Sunday 5 September

UNTOLD FACES
Spirit Level
Discover the daily life, culture and history of the indigenous tribes of the Guarani M'Byá who live in three villages within the city of São Paulo. Photographer Rosa Gauditano has worked with the villages for over 20 years, organising drawing and painting workshops and donating digital cameras to 90 Guarani indigenous youngsters, resulting in a powerful series of revealing artworks. In partnership with Canning House.
→ Full info at se1.net/9534

Siobhan Davies Studios

85 St George's Road
www.siobhandavies.com
Mon-Thu 10am-8pm, Fri-Sat 10am-5pm, Sun 10am-2pm; free

Until Friday 27 August

60/40 STARTING POINT SERIES 2010
A textile artist, a furniture maker and a potter showcase new work at Siobhan Davies Studios this summer.
→ Full info at se1.net/9351

Southwark Cathedral

London Bridge T 020 7367 6700
www.southwarkcathedral.org.uk
Refectory Mon-Fri 8.30am-6pm; Sat & Sun 10am-6pm; free

Until Monday 30 August

TIME WALKS: MATILDA MORETON
Historical maps of London printed onto tiles and bone china tableware. 18th-century woodcuts of tradesmen bring the old streets of London to life. All works are for sale in the cathedral shop.
→ Full info at se1.net/9456

Tate Modern

Bankside T 020 7887 8888
www.tate.org.uk/modern
Sun-Thu 10am-6pm; Fri & Sat 10am-10pm; free

Until Sunday 5 September

FRANCIS ALYS
£10 (conc £8.50)
Major retrospective of work by the celebrated experimental Belgian-born artist.
→ Full info at se1.net/7954

Until Sunday 3 October

EXPOSED: VOYEURISM, SURVEILLANCE AND THE CAMERA
£10 (conc £8.50)
An insight into photographic images made surreptitiously or without the explicit permission of those depicted.
→ Full info at se1.net/7951

The Wapping Project Bankside

65a Hopton Street T 020 7981 9851
www.thewappingprojectbankside.com
Tue-Sat 11am-6pm; free

Until Saturday 7 August

STEPHEN J MORGAN
A series of images of immigrant Irish working class areas in Birmingham.
→ Full info at se1.net/9294

Tuesday 17 August to Saturday 4 September

GROUP SHOW
A small review collection of works by each of the gallery artists prior to the launch of a film collection by Elina Brotherus on 16 September.
→ Full info at se1.net/9487

Tower Bridge Exhibition

Tower Bridge T 020 7940 3985
www.towerbridge.org.uk
10am-5.30pm; £7 (conc £5; child £3)

Until Thursday 30 September

RIVER THAMES: SOURCE TO SEA
Visitors to Tower Bridge have the chance to travel the full 215 miles of the River Thames in just 200 feet when they visit this photographic exhibition.
→ Full info at se1.net/9082

Vitrine Gallery

Bermondsey Square
www.vitrinegallery.co.uk
24 hours; free

Until Tuesday 14 September

THE SUMMER EXHIBITION SE1
Exhibition of works by local artists from Bankside, Borough, Bermondsey and the Elephant & Castle.
→ Full info at se1.net/9433

September in SE1

- Free movies at The Scoop
- Bermondsey Street Festival
- Thames Festival
- Open House London
- Real Harvest Festival
- Great River Race
- Waterloo East Theatre

...and much, much more

The next issue will be available from
Wednesday
1 September

Send your event listing details to se1events@banksidepress.com

londonSE1
community website

- Solicitors in SE1**
- Fitted Bedroom Wardrobes
- Lost Parrot**
- Weston Street tunnel
- Carbuncles in SE1**
- Dressmakers
- Strange 'vine' in St George's Road**
- Art or graffiti?
- Design Museum moving**
- Filming on Lower Marsh
- Laughing Gravy**

This month's
forum topics

- Living Space playground
- Fine Life Shopper**
- Supermarkets near Elephant & Castle?
- Mint Street Park**
- Car scratch repair

...and dozens more topics

join the debate at
www.London-SE1.co.uk

BOOK REVIEW

London: The Story of a Great City

Jerry White • Deutsch • £30
Buy this book at www.inSE1.co.uk/books

This is one of the better mega books on London's history. It is published in association with the Museum of London and is written by leading London historian Jerry White.

He understands that Lambeth and Southwark are a vital ingredient of today's central London even if Southwark was once part of Surrey and Rotherhithe was a Kent village.

The modern pictures are good with one showing St Paul's dome, the Oxo Tower and the Victoria Tower all in a line. But there are also important pictures from the past such as the Rhinebeck Panorama showing Southwark riverside and Hogarth's Southwark Fair. The caption reminds us that depicted is Southwark-born poet laureate Colley Cibber falling over.

Just near the fair site in Borough High Street was the Tabard Inn in today's Talbot Yard. There is a large reproduction of a watercolour showing the medieval Tabard in 1870 just before it was demolished. It's an Ind Coope pub and a board announces: "General Railway & Shipping Office".

The 1684 Frost Fair opposite today's Gabriel's Wharf is shown sometime during its two month run. One fair souvenir was a card "printed...on the ICE" and a replica can be found in one of the pockets scattered through the book.

Other items which fall out include an 1547 map and a 1932 tram map showing three routes running along the Embankment and down Blackfriars Road.

Best of all are the pages from the Festival of Britain souvenir programme. The map is rewarding as you can plot where the Dome of Discovery stood and which Waterloo Underground entrance was the Festival Station.

The great surprise maybe is the 1809 drawing of a professor giving a chemistry demonstration in the Rotunda on the site of the proposed Beetham Tower in Blackfriars Road.



THEATRE REVIEW

The Railway Children

Waterloo Station Theatre • See listing on page 6
Buy tickets at www.se1.net/8865

A crowd-pleasing, spectacularly-staged summer blockbuster, in a most unlikely but apt destination.

It's a wonderful idea – staging that much loved book and film, *The Railway Children*, in an actual railway station – Waterloo. And it is the setting and staging of this production which makes it so magical.

You can't help but be enchanted by the accurate recreation of a provincial Victorian railway station, complete with footbridge, signal box, luggage and station bicycle (which is cycled up and down the platform).

The ingenious, moveable staging allows the production to shift seamlessly between London and Yorkshire, interior and exterior.

The comings and goings of trains are brilliantly imagined; steam, whistles and a physical rumbling under foot meaning that little suspension of disbelief is required (the distant sounds from Waterloo's actual trains, full of commuters heading home, only add to the effect).

However, everyone present knows the star of the show is due to be a real steam train – an 1870 locomotive, pulling a carriage used in the 1970 film.

You can feel the audience on the edge of their seats, anticipating its arrival, and the oohs and aahs when the train finally makes its appearance are indicative of the extent to which the spectators are enjoying the spectacle.

The cast are all full of enthusiasm and vigour, and it is difficult to not warm to them. Perhaps inevitably the plot feels a little disjointed and rushed, as there is only so much of the novel that can be translated into the two hour production.

But for anyone seeking a family-friendly evening at the theatre, or a heart-warming, feel-good play, it would be hard to beat *The Railway Children*.

Plus the production may satisfy those that criticise the upkeep cost of the disused former Eurostar terminal – at least for now.

ALICE DICKERSON

SUMMER HOLIDAY IDEAS

Guerrilla geographers launch iPhone app

A collective of guerrilla geographers took over the *Golden Hinde* last month to launch a new iPhone app packed with quirky location-based challenges.

Mission:Explore is an iPhone app and website offering more than 1,000 location-specific missions for kids (aged 7 to 97) to complete in central London, as well as ones that can be done anywhere in the world.

Based on the book *Mission:Explore* by The Geography Collective, each mission challenges kids and adults alike to explore and experience their environment in new ways.

All Mission:Explore challenges are created and checked by experienced explorers from The Geography Collective. Only reasonably safe adventures appear and a training section teaches explorers how to look after themselves before they set out.

"Mission:Explore is about helping kids and families to get out exploring," says Daniel Raven-Ellison. "You might be looking for a place to play or inspiration for something to do, or you might want to learn about the geography of a place.

"Mission:Explore helps to deliver on all of these things, but it goes deeper too. Scores of politicians, academics, charities and parents agree that children need to have more freedom to play outdoors.

"The Mission:Explore iPhone app, website and book tackles risk aversion head-on, talking directly to children and families, providing a cultural solution to a cultural problem. Exploration can increase learning, improve physical and mental health and address social and environmental issues. This is our contribution to promoting all these things."

• www.missionexplore.co.uk

londonSE1
community website**News you may have missed****Southwark to ban ice cream vans from SE1 riverside**

Itinerant ice cream selling is to be prohibited by Southwark Council along the riverside from the Oxo Tower to Shad Thames.
...more at www.London-SE1.co.uk/n4719

Theresa May at Coin Street

Home secretary Theresa May visited Coin Street Neighbourhood Centre to make a major speech on new measures to tackle antisocial behaviour.
...more at www.London-SE1.co.uk/n4718

£1 million+ Lottery cash for South Bermondsey

At least £1 million of lottery good cause funding is to flow into South Bermondsey via the Big Lottery Fund.
...more at www.London-SE1.co.uk/n4713

Berkeley Homes & Southwark in Potters Fields joint venture

Southwark Council's cabinet last month agreed to enter a joint venture with Berkeley Homes for the redevelopment of the Potters Fields coach park site near Tower Bridge.
...more at www.London-SE1.co.uk/n4710

Giant billboards for South

Bank, Blackfriars and Elephant
Transport for London has warned that a 52-metre-high advertising billboard proposed for Draper House at Elephant & Castle would "exacerbate accident and collision risks" at the southern roundabout.
...more at www.London-SE1.co.uk/n4709

Assembly to investigate London Promenade scheme

The London Assembly's transport committee is to consider the London Promenade proposal to widen the Thames Path in SE1.
...more at www.London-SE1.co.uk/n4707

Globe Education's Sackler Studios to open in Park Street

Shakespeare's Globe has announced that its new education & rehearsal space on Park Street will be known as The Sackler Studios.
...more at www.London-SE1.co.uk/n4700

Trinity Street piazza wins Green Corners Award

Local resident Clare Armstrong has won the Conservation Foundation's Pavement Green Corners Award for transforming the six new tree pits at Trinity Street piazza.
...more at www.London-SE1.co.uk/n4687

17th-century bowls found at Borough Market go on show

The Museum of London has unveiled three ceramic bowls recently found during archaeological work for the new Thameslink viaduct at Borough Market.
...more at www.London-SE1.co.uk/n4679

Buddhist text displayed on Redcross Way banner

Turner Prize-nominated artist Mark Titchner has created a giant banner that will be displayed on the wall of the Art House at Cathedral School in Redcross Way.
...more at www.London-SE1.co.uk/n4685