

**THIS MONTH:** Cheese & Wine Festival p3 • Annie Lennox at Millennium Bridge p3  
Stamford Street & The Cut local history walk p5 • Book groups at local libraries p4

**March 2011**

*in* **SE1**

**Issue 153**

**FREE**



**STEEL & SHAMASH**  
THE WATERLOO COMMUNITY SOLICITORS

*We can help with all your legal problems*

- Family
- Housing
- Children
- Criminal

For a friendly professional service  
Only two minutes from Waterloo Station

Contact Steel & Shamash  
12 Baylis Road • Waterloo • London • SE1 7AA  
Tel: 020 7803 3999  
Email: [mail@steelandshamash.co.uk](mailto:mail@steelandshamash.co.uk)

# Elephant & Castle artists launch creative spaces

In an attempt to capture and celebrate the essence of the Elephant & Castle, photographer Eva Sajovic and recent Royal College of Art graduate Rebecca Davies are taking up residence in the shopping centre for a second time.

From Friday 4 March Rebecca and Eva present Studio at the Elephant. They are moving into Unit 207/208 of the Elephant & Castle Shopping Centre. The studio will be opening its doors for people to get involved in workshops, participate in discussions and enjoy some of the screenings over the next few months.. The unit will also be a studio for Eva and Rebecca and a place of temporary residence to visiting artists.

Studio at the Elephant builds on the success of Rebecca's two-week Elephant & Castle Project which took place at the shopping centre last autumn.

"It's an observational project of a place that I really love and a community I feel a part of," Rebecca told us last November.

"It's a kind of preservation of the community and of the shopping centre before the big change that's about to happen will happen."

As part of the collaboration between the two artists, Rebecca has produced an illustrated floor plan of the area covered by Eva's new photo trail. The project will see photographs of locations displayed in the neighbouring establishment. La Bodeguita's photo will be in Nicole's alteration and repair shop and so on.



"The idea of having a unit devoted to the arts and to public events is a commendable one," says local historian Stephen Humphrey.

"I gave a talk in the previous unit on the history of the Elephant & Castle. The sizeable audience and obvious interest on the part of local people suggests that there would be a good response to a longer programme centred on the arts."

- The launch event will be held on Friday 4 March from 6pm onwards; all are welcome.
- Full details at [studioattheelephant.blogspot.com](http://studioattheelephant.blogspot.com)

## E&C's pop-up portrait studio

The International Portrait Gallery is a pop-up portrait studio and project space at Hotel Elephant in Newington Causeway.

Through the space Emile Kelly will offer photographic portraits to the local community, free of charge and obligation, in the hope of establishing collaborative relationships with willing individuals.

These individuals will become the subjects of his photography-based work which is concerned with globalisation and its effects on community and identity.

If you live or work in the area, or consider yourself a part of the community in any way, Emile would love to take your picture and have a chat. You are not obliged to let Emile use this picture. You will receive a digital copy for free and a print at cost price.

- See listing on page 3
- [www.emilekelly.com](http://www.emilekelly.com)

**FRANK HARRIS and Co**  
RESIDENTIAL SALES,  
LETTINGS and  
MANAGEMENT  
123 Stamford Street  
London SE1 9NN  
020 7620 3400  
[www.frankharris.co.uk](http://www.frankharris.co.uk)

Controlled ZONE W  
Mon-Fri 8.30 am - 6.30 pm  
Saturday 9.30 am - 1.00 pm

**ARLA**  
Association of Residential Letting Agents

Looking for a local job?  
Got a local job to advertise?  
[www.London-SE1.co.uk/classifieds](http://www.London-SE1.co.uk/classifieds)

**in SE1****27 Blackfriars Road  
London SE1 8NY**Tel 020 7633 0766  
Web www.inSE1.co.uk© 2011 Bankside Press  
ISSN 1750-1334 (Print)  
ISSN 1750-1342 (Online)Editor  
**Leigh Hatts**  
leigh.hatts@banksidepress.com  
Production Editor  
**James Hatts**  
james.hatts@banksidepress.com  
Contributing writer  
**Marion Marples**

Printed by Copyprints Ltd

**ADVERTISING**For details of our competitive rates call us for a rate card on 020 7633 0766 or email [sales@inSE1.co.uk](mailto:sales@inSE1.co.uk). You can also download our rate card from [www.inSE1.co.uk](http://www.inSE1.co.uk)**SUBSCRIPTIONS**

To receive the next 12 issues by post in the UK please send a cheque for £8 to the address above, made payable to 'in SE1'. Please specify starting issue.

**LISTINGS INFORMATION**Listings for most types of local event are free; details of events to be considered for inclusion next month should be sent by **Monday 21 March** to [se1events@banksidepress.com](mailto:se1events@banksidepress.com) or by post.**DISCLAIMER**

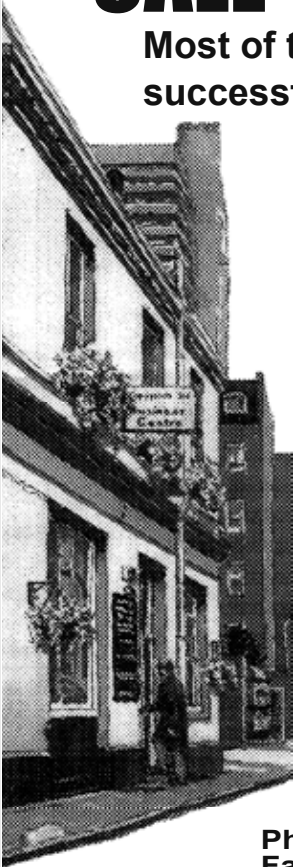
Every effort is made to ensure the accuracy of our listings but all details are subject to alteration by venues and organisers and no responsibility can be accepted for any inaccuracies.

**londonSE1**  
community websiteWe also publish a community website, updated daily with local news and features and a lively discussion forum. Visit it at [www.London-SE1.co.uk](http://www.London-SE1.co.uk)**[ SE1 Direct ]**To ensure that you don't miss out on anything that's happening in the area, make sure you receive our weekly email newsletter every Monday. Sign up today by visiting [www.SE1direct.co.uk](http://www.SE1direct.co.uk). With more than 7,200 subscribers, can you afford to miss out?**This month in brief****Bankside Bridge Society**

This new bridge group meets every Tuesday 7.30pm to 9.30pm at the Bankside Community Space in Great Guildford Street. The cost is £3 per session and learners are welcome.

**Free yoga & Pilates**

A new free weekly Pilates classes starts on Tuesday 1 March (3.30pm-4.30pm) at the Setchell Hall in Hazel Way (just off Grange Road). The hall also hosts a free yoga class on Monday evenings from 6pm.

**Conference Centre**Waterloo Conference Centre is the new name for the meeting rooms available for hire at the Union Jack Club on Sandell Street. The centre is offering 50 per cent off meeting rooms on the 23rd floor till the end of March. See [www.waterlooconferencecentre.co.uk](http://www.waterlooconferencecentre.co.uk)**Junior tennis**Southwark City Tennis Club is offering junior tennis coaching at Tanner Street Park. Term time coaching sessions on Saturdays, 5-7 years (10-11am), 8-9 years (11-12 noon), 10-11 years (12.15pm-1.15pm) and over 10s 1.15pm to 2.45pm. Cost £30 per 12 week term with discounts for those on low incomes. See [www.southwarkcitytennisclub.co.uk](http://www.southwarkcitytennisclub.co.uk) for details, email [southwarktennisclub@hotmail.co.uk](mailto:southwarktennisclub@hotmail.co.uk) or phone 07988 619215.**Vapiano**The new Vapiano pizza and pasta restaurant has now opened at the corner of Southwark Street and Great Guildford Street. [www.london-se1.co.uk/r755](http://www.london-se1.co.uk/r755)**Simon the Tanner**The Simon the Tanner pub on Long Lane has finally reopened. [www.london-se1.co.uk/r199](http://www.london-se1.co.uk/r199)**Borough Chamber Choir**The SE1-based Borough Chamber Choir is performing this month at the Queen's Chapel of the Savoy as part of the Brandenburg Spring Choral Festival. For details of the concert on Friday 18 March see [www.boroughchamberchoir.org.uk](http://www.boroughchamberchoir.org.uk) The choir will perform some of the same pieces at St George the Martyr in Borough High Street on Friday 2 April.**South London Art Map**A new map of art galleries from Bankside to Peckham and Deptford has been launched. [www.southlondonartmap.com](http://www.southlondonartmap.com)**Quit Rents**The ancient ceremony of the Rendering of the Quit Rents to the Crown for the Town and Borough of Southwark, dating from 1327, takes place on Thursday 17 March. The ceremony marks the Charters granting Southwark to the City of London, the largest property owner in the borough area. It is conducted by the Foreman and Officers of the Guildable Manor on behalf of the Lord Mayor of the City who present the Quit Rent to the Crown's representative, the Queen's Remembrancer, senior judge of the Royal Courts of Justice. Applications to attend and further details available at [www.guildablemanor.org](http://www.guildablemanor.org)**The Downside Centre**The Downside Centre in Druid Street has launched a new membership package called Downside Fit to make it easy for local people to make use of the swimming pool and gym at the Bermondsey youth club building. The centre is also taking bookings for Little Dolphins – a six-week swimming course for children aged between 4 months and 2 years. [www.downsidecentre.com](http://www.downsidecentre.com)**Win a day at the brewery**Hayley Brent-Isherwood from Bermondsey is running in the Virgin London Marathon to raise funds for the British Heart Foundation. To raise money and awareness Hayley will be holding a charity auction as part of her fundraising event on Saturday 5 March at The King's Arms in Tooley Street. Druid Street brewery The Kernel and the Dean Swift pub in Lafone Street have joined forces to offer an outstanding auction lot in support of Hayley's fundraising campaign. After approaching Evin O'Riordain, head brewer at The Kernel, Hayley managed to secure an exclusive opportunity for the lucky winning bidder to spend a day brewing at The Kernel under Evin's guidance. Full details at [www.hayleyrunlikely.co.uk](http://www.hayleyrunlikely.co.uk)**CALL in the YARD****Most of the big and  
successful local firms****do when  
they have  
something to  
say and they  
would like us  
to give a sharp  
edge to it.****PRINT  
COPIES  
REPORTS  
BROCHURES****Communication  
of all kinds****Copyprints Ltd  
BUSINESS CENTRE  
1 Talbot Yard  
SE1 1YP**[www.copyprintsltd.co.uk](http://www.copyprintsltd.co.uk)**Phone 020 7407 2079  
Fax 020 7403 5411**

# Alex Neil

The London Estate & Letting agent  
**0800 822 3449**  
www.alexneil.com

## What's On March

Comprehensive local listings

### Special events

#### Beormund Community Centre

177 Abbey Street T 020 7237 9313  
www.beormund.co.uk

#### Friday 11 to Saturday 12 March THAMES WATER CHAMBERS WHARF DROP-IN SESSIONS

*Fri 10am-7pm; Sat 10am-4pm*  
Thames Water, in conjunction with St James Group, has bought land at Chambers Wharf to ensure it can be considered as a key construction site for the Thames Tunnel 'super sewer'. The land is now a possible alternative to using King's Stairs Gardens in Rotherhithe. Find out more at this information session.  
→ Full info at [se1.net/10525](http://se1.net/10525)

#### Bermondsey Central Hall

256 Bermondsey Street

#### Friday 4 March WOMEN'S WORLD DAY OF PRAYER

*1.30pm; free*  
Speaker: Revd Dr Janet Corlett. Theme: How many loaves have you - Praying for Chile. Followed by refreshments.  
→ Full info at [se1.net/10537](http://se1.net/10537)

#### Cathedral Square

Montague Close

#### Tuesday 8 March BETTER BAKSIDE PANCAKE DAY RACE

*12 noon-2pm*  
Come and watch teams from local businesses compete in the annual pancake race outside Southwark Cathedral.  
→ Full info at [se1.net/10496](http://se1.net/10496)

#### Garden Museum

Lambeth Palace Road T 020 7401 8865  
www.gardenmuseum.org.uk

#### Sunday 27 March BONSAI DAY

*10.30am-5pm; £6 (conc £5; under-16s free)*  
To celebrate their 50th year the Bonsai Kai will host the museum's first Bonsai Day. Members of Europe's oldest bonsai club will be on hand to share their

knowledge and enthusiasm for this living horticultural art form. Visitors will be able to create a bonsai and take it home, take in an exhibition of members' trees and demonstrations of various bonsai techniques. There will also be trees for sale and a re-potting service for anyone who would like to bring a tree that needs some attention.  
→ Full info at [se1.net/10546](http://se1.net/10546)

#### Hotel Elephant

77-85 Newington Causeway

#### Until Wednesday 23 March INTERNATIONAL PORTRAIT GALLERY

*Sat-Sun 10am-6pm Mon-Wed: 10am-3pm*  
Pop-up portrait studio and project space. Emile Kelly will offer photographic portraits to the local community, free of charge and obligation, in the hope of establishing collaborative relationships with willing individuals. These individuals will become the subjects of his photography-based work which is concerned with globalisation and its effects on community and identity.  
→ Full info at [se1.net/10521](http://se1.net/10521)

#### Imperial War Museum

Lambeth Road T 020 7416 5000  
london.iwm.org.uk  
*Daily 10am-6pm; free*

#### Sunday 20 March A DAY AT THE IWM

*11am-5pm; free*  
The Open University presents a series of talks given by social sciences and arts lecturers, creative writing workshops and psychology taster sessions. Potential visitors should contact 020 7556 6184 or R01-outreach-promotions@open.ac.uk to make a booking.  
→ Full info at [se1.net/10573](http://se1.net/10573)

#### John Harvard Library

211 Borough High Street T 020 7525 2000  
www.southwark.gov.uk/libraries

#### Wednesday 2 & Saturday 5 March BOROUGH HIGH ST RESURFACING INFORMATION SESSION

*Wed 5pm-7pm; Sat 10am-2pm*  
Transport for London is planning to resurface Borough High Street and to repave the footways.  
→ Full info at [se1.net/10493](http://se1.net/10493)

#### Saturday 5 March WORLD BOOK NIGHT

*5pm-10pm; free*  
Book Aid International, Southwark Libraries and World Book Night present an evening of book-giving, readings, live music, two giant book sculptures and a reading and Q&A session with special

guest Alexander Masters, author of *Stuart: A Life Backwards*.  
→ Full info at [se1.net/10532](http://se1.net/10532)

#### Tuesday 22 March SCRABBLE CLUB

*5pm-6pm; free*  
→ Full info at [se1.net/10540](http://se1.net/10540)

#### Jubilee Gardens

Belvedere Road

#### Tuesday 8 March EQUALS SOUL TRAIN

*3pm-6pm*  
To celebrate 100 years of International Women's Day through the international language of dance, EQUALS will be creating an EQUALS soul train. Get down and groove with your EQUAL of the opposite sex - a friend, a relative, or a stranger.  
→ Full info at [se1.net/10589](http://se1.net/10589)

#### Millennium Bridge

Bankside

#### Tuesday 8 March JOIN ME ON THE BRIDGE

Women will be gathered on bridges from Australia to India, from Afghanistan to Ireland, all celebrating the centenary year of International Women's Day. The London March, led by Annie Lennox, will leave Borough Market at 11am, walking along Bankside to Millennium Bridge, continuing west along the north bank and returning to the South Bank for speeches at Royal Festival Hall (12.30pm-1pm). Coffee and banner-making at Borough Market from 10am.  
→ Full info at [se1.net/10591](http://se1.net/10591)

#### Mint Street Park

Southwark Bridge Road

#### Friday 4 March THE WAY AHEAD FOR MINT STREET? PUBLIC CONSULTATION

*4pm*  
Funding has been made available to make big changes to Mint Street Park. Come and have your say on what you think of plans for this open space. Refreshments and activities for children will be provided at the adventure playground. Contact 020 7403 3393 or peter@bost.org.uk for further details.  
→ Full info at [se1.net/10530](http://se1.net/10530)

#### Morley College

61 Westminster Bridge Road T 020 7928 8501  
www.morleycollege.ac.uk

#### Sunday 27 March FAMILY FUN DAY

*10am-4pm*  
Series of family learning workshops and activities.

→ Full info at [se1.net/10590](http://se1.net/10590)

#### Redman Green

Lant Street

#### Saturday 26 March REDMAN GREEN SPRING EVENT

*10am-2.30pm; free*  
Help to plan an edible hedge, collect a free compost caddy, barbecue and meet some feathered friends from Vauxhall City Farm.  
→ Full info at [se1.net/10553](http://se1.net/10553)

#### Southbank Centre Square

Belvedere Road  
www.southbankcentre.co.uk

#### Friday 4 to Sunday 6 March REAL FOOD MARKET

*Fri 11am-8pm; Sat 10am-6pm; Sun 12 noon-6pm*  
The market takes place on the first weekend of every month giving Londoners the opportunity to buy fresh, high quality, affordable products, direct from 40 carefully selected Real Food producers.  
→ Full info at [se1.net/10534](http://se1.net/10534)

#### Friday 18 to Sunday 20 March CHEESE AND WINE FESTIVAL

*11am-8pm (Sun till 6pm); free*  
The festival will celebrate the finest cheeses and wines and demonstrate the nuances and delights of the relationship between the two.  
→ Full info at [se1.net/10323](http://se1.net/10323)

#### Waterloo Library

114-118 Lower Marsh T 020 7926 8750  
www.lambeth.gov.uk

#### Tuesday 1 & Friday 4 March FRIENDS OF WATERLOO LIBRARY

*3pm-6pm*  
First of two special events organised by the Friends of Waterloo Library to gather support for the library which is under threat of closure. All ages welcome for storytelling, poster design competition, raffle and more.  
→ Full info at [se1.net/10548](http://se1.net/10548)

#### Waterloo International

#### Saturday 26 March THE SOLDIER CHALLENGE

*10am; registration fee £35*  
Ever fancied abseiling in the City of London, leopard crawling through Hyde Park or running an obstacle course in the moat at the Tower of London?  
→ Full info at [se1.net/10580](http://se1.net/10580)

# CONNECTING LONDON

Whether you are round the corner in SE1, or in the West End or City, we can offer you remote and on-site IT support. We build our service around you and ensure we are there when you need us to be.

**0207 407 1335**

129 Great Suffolk Street, London, SE1 1PP

Website - [www.connectinglondon.com](http://www.connectinglondon.com)

## Special local offer for SE1

No callout charges, £50 +VAT per hour

We can help you with all of your IT needs:

- Maintenance and support contracts for Small Businesses through to large corporations.
- Personal PC support, repair and disinfection services.
- Competitive Home and Business Broadband Solutions.
- Mobile Communications.



"Whatever IT takes"

## Children &amp; family

## Coin Street Neighbourhood Centre

108 Stamford Street  
www.coinstreet.org

T 020 7021 1600

Wednesday 2 March

**VOICELAB TASTER SESSION**5pm-6pm; booking essential: 020 7021  
1600 or l.cowell@coinstreet.org; free

Voicelab, Southbank Centre's vocal initiative, invites families to come and join in with a free singing workshop led by Mary King, Voicelab director and internationally acclaimed vocal artist and star of Channel 4's *Musicality and Opportunity*. No previous singing experience required.

→ Full info at [se1.net/10529](http://se1.net/10529)

## HMS Belfast

Tooley Street

T 020 7940 6300

[hmsbelfast.iwm.org.uk](http://hmsbelfast.iwm.org.uk)

Saturday 12 to Sunday 13 March

**SHIP'S CONSERVATION**Drop in 11am-12.30pm & 2pm-4pm;  
£13.50; senior citizen and student conc  
£10.80; under-16s free

Get your hands dirty and examine objects that relate to the ongoing work of London's largest conservation project, HMS Belfast. The whole ship, including her extensive metalwork and everything onboard, needs constant attention and this is a unique opportunity to learn more about the process from experts. Entry included in general admission price. Suitable for all ages with parental supervision.

→ Full info at [se1.net/10565](http://se1.net/10565)

## Imperial War Museum

Lambeth Road

T 020 7416 5000

[london.iwm.org.uk](http://london.iwm.org.uk)

Daily 10am-6pm; free

Saturday 5 to Sunday 6 March

**STORYTELLING**

11.30am, 1pm &amp; 2pm; free

Children are invited to listen and participate in tales told by storyteller Pamela Marre, all of which link to the theme of children and war. Suitable for children aged 6 and above. All children must be accompanied by an adult.

→ Full info at [se1.net/10350](http://se1.net/10350)

Saturday 26 to Sunday 27 March  
**FAMILY INTRODUCTION TO THE HOLOCAUST EXHIBITION**

11am-12 noon; free

This free drop in session is a useful starting point for families who wish to learn more about the Holocaust before visiting the museum's free exhibition. This session is suitable for children aged 11 and above but please note that the Holocaust Exhibition is only suitable for ages 14 and above.

→ Full info at [se1.net/10351](http://se1.net/10351)

## Shakespeare's Globe

New Globe Walk

T 020 7401 9919

[www.shakespeares-globe.org](http://www.shakespeares-globe.org)10am-5pm; Exhibition £10.50; children  
£6.50; students £8.50; family £28

Saturday 12 to Sunday 13 March

**ACTIVITY WEEKEND**

Included in the price of a standard exhibition ticket, families can enjoy a range of activities including live sword fighting demonstrations, Elizabethan costume dressing and printing demonstrations using a full-size recreation of a 17th Century printing press.

→ Full info at [se1.net/10552](http://se1.net/10552)

## Shortwave Cinema

10 Bermondsey Square

T 020 7357 6845

[www.shortwavefilms.co.uk](http://www.shortwavefilms.co.uk)

Saturday 12 March

**DESPICABLE ME**

11am; £4 (accompanying adult free)

Kids club screening. Serial villain Gru hatches a plan to steal the moon, aided by his army of genetically altered corn pops. His dastardly plans are thwarted however when he finds three little orphan girls on his doorstep, in need of a father figure.

→ Full info at [se1.net/10561](http://se1.net/10561)

## Woolfson &amp; Tay

12 Bermondsey Square

T 020 7407 9316

[www.woolfsonandtay.com](http://www.woolfsonandtay.com)

Friday 4 &amp; 18 March

**STORYTELLING WITH VANESSA WOOLF**

10am-10.30am; £3

Come along for a fun-filled morning with local storyteller Vanessa Woolf. Vanessa will enthral children with folk tales and stories about the local area. No age limit applies. Mums and dads are encouraged to participate.

→ Full info at [se1.net/10568](http://se1.net/10568)

## Public meetings

## Bankside Community Space

18 Great Guildford Street

Monday 7 March

**BANKSIDE RESIDENTS' FORUM: OPEN FORUM**

6.30pm

Come and meet your neighbours and find out more on Bankside issues

- Bankside licensing saturation policy update
- What are the future developments likely to affect residents?
- Bankside Urban Forest update

→ Full info at [se1.net/10518](http://se1.net/10518)

## Southwark Council

[www.southwark.gov.uk](http://www.southwark.gov.uk)

Wednesday 9 March

**BOROUGH & BANKSIDE COMMUNITY COUNCIL**7pm at Charles Dickens Primary School,  
Toulmin Street

Regular meeting for residents of Cathedrals and Chaucer wards. Meet your councillors, have your say and learn about the work of local police officers. Find out about plans for a Charles Dickens memorial in the Borough.

→ Full info at [se1.net/9936](http://se1.net/9936)

Wednesday 9 March

**BERMONDSEY COMMUNITY COUNCIL**7pm at Harris Academy Bermondsey,  
Southwark Park Road

Regular public meeting for residents of Grange, Riverside and South Bermondsey wards. This month's theme is "managing Bermondsey's environment". The meeting will include workshops on transport proposals for Spa Road, Jamaica Road and Lynton Road. There will be opportunities to discuss the proposed air quality strategy for the area. Plus a chance to find out about the trial of new heating methods on four Bermondsey estates.

→ Full info at [se1.net/10414](http://se1.net/10414)

## Waterloo Action Centre

14 Baylis Road

T 020 7261 1404

[www.waterlooaactioncentre.co.uk](http://www.waterlooaactioncentre.co.uk)

Wednesday 23 March

**WATERLOO COMMUNITY DEVELOPMENT GROUP GENERAL MEETING**

7pm

Regular public meeting of the group that monitors proposed developments in Waterloo. Hear from the developers, ask questions and help to shape the community's response.

→ Full info at [se1.net/10359](http://se1.net/10359)

## Talks &amp; literature

## Calder Bookshop

51 The Cut

T 020 7620 2900

[www.oneworldclassics.com](http://www.oneworldclassics.com)

Thursday 3 March

**DANTE AND THE INVENTION OF HELL**

7pm; £6 (conc £4)

Actors reproduce the most gripping moments of Dante's *Inferno*.

→ Full info at [se1.net/10444](http://se1.net/10444)

Thursday 10 March

**THE CRUSADES & THE ORIGINS OF TODAY'S CONFLICTS**

7pm; £6 (conc £4)

The Franks invaded Palestine when part of the Islamic world. Readings followed by possibly animated discussion.

→ Full info at [se1.net/10445](http://se1.net/10445)

## Florence Nightingale Museum

St Thomas' Hospital

T 020 7620 0374

[www.florence-nightingale.co.uk](http://www.florence-nightingale.co.uk)

Tuesday 8 March

**FOLLOWING IN NIGHTINGALE'S FOOTSTEPS: EDITH CAVELL'S STORY**

6.15pm; £5.80 (conc £4.80)

Talk by Jonathan Evans (archivist, Barts and the London NHS Trust). Tickets can be purchased on the night or via calling the museum with a credit card to hand.

→ Full info at [se1.net/10541](http://se1.net/10541)

## Garden Museum

Lambeth Palace Road

T 020 7401 8865

[www.gardenmuseum.org.uk](http://www.gardenmuseum.org.uk)

Thursday 10 March

**CHRISTOPHER WOODWARD: THE PAINTER AND THE GARDEN**

7pm; £15 from 020 7401 8865 or

[gardenmuseum.eventbrite.com](http://gardenmuseum.eventbrite.com)

Christopher Woodward explores the relationship between the painter and the garden over the centuries, but with a particular emphasis upon 20th century "painter gardeners" such as Cedric Morris and John Nash - and Charlotte Verity. Why paint a garden? And why have so few artists done it well?

→ Full info at [se1.net/10542](http://se1.net/10542)

Wednesday 16 March

**VISTA: DAN HINKLEY**

7pm; £10 from 020 7401 8865 or

[gardenmuseum.eventbrite.com](http://gardenmuseum.eventbrite.com)

Dan Hinkley is one of the most renowned gardeners in the US - a guru and a pin-up.

→ Full info at [se1.net/10543](http://se1.net/10543)

Thursday 17 March

**BRINGING BACK WILDFLOWERS**

7pm; £15 from 020 7401 8865 or

[gardenmuseum.eventbrite.com](http://gardenmuseum.eventbrite.com)

Charles Flower is passionate about restoring the British countryside. After the destruction of flower habitats in the 1970s and 1980s he pioneered practical methods of wildflower restoration on his own farm, where he now grows wild flower seed crops. In this talk he explores how we can bring back wildflowers to our gardens and public spaces and why this could be crucial for our country's wildlife.

→ Full info at [se1.net/10544](http://se1.net/10544)

Monday 21 March

**MAKING WILDFLOWER MEADOWS**

7pm; £15 from 020 7401 8865 or

[gardenmuseum.eventbrite.com](http://gardenmuseum.eventbrite.com)

In a rare London appearance gardener and writer Pam Lewis will tell the story of the meadows, grasslands and chalk banks she and her husband created at Sticky Wicket in Somerset and give advice on how to create a wildflower meadow.

→ Full info at [se1.net/10545](http://se1.net/10545)

## John Harvard Library

211 Borough High Street

T 020 7525 2000

[www.southwark.gov.uk/libraries](http://www.southwark.gov.uk/libraries)

Friday 18 March

**JOHN HARVARD BOOK GROUP**

1pm-2pm; free

This month the group is discussing *Look Back in Hunger: The Autobiography by Jo Brand*. Coffee and tea will be provided. To pick up a copy of the book or find out more about the group email [eugenia.atta@southwark.gov.uk](mailto:eugenia.atta@southwark.gov.uk)

→ Full info at [se1.net/10538](http://se1.net/10538)

## New Cut Housing Co-operative Hall

106 The Cut

Tuesday 8 March

**RECENT LOCAL ARCHAEOLOGICAL AND HISTORICAL WORK**

7.30pm (refreshments from 7pm); £1

Symposium with various speakers. A Southwark & Lambeth Archaeological Society event.

→ Full info at [se1.net/9653](http://se1.net/9653)

## Southwark Cathedral

London Bridge

T 020 7367 6700

[www.southwarkcathedral.org.uk](http://www.southwarkcathedral.org.uk)

Thursday 3 March

**THE VALUE OF PEOPLE AT WORK: JUST REWARDS, DUE RECOGNITION?**

The Garry Weston Library; 7pm-8.30pm;

free

The Justice &amp; Development Group

presents a public forum with Stephen Overell (associate director, The Work Foundation); Rona Collins (leader, integrated technology development, IBM, India) and Matthew Bolton (Living Wage Campaign, Citizens UK).

→ Full info at [se1.net/10563](http://se1.net/10563)

## The Table

85 Southwark Street

Monday 14 March

**BOROUGH BOOK GROUP**

6.30pm; free

The Borough book group will this month discuss *Room* by Emma Donoghue. Copies can be collected at John Harvard Library. Please contact [eugenia.atta@southwark.gov.uk](mailto:eugenia.atta@southwark.gov.uk) to pick up a copy of the book or make further enquiries.

→ Full info at [se1.net/10539](http://se1.net/10539)

## Waterloo Library

114-118 Lower Marsh

T 020 7926 8750

[www.lambeth.gov.uk](http://www.lambeth.gov.uk)

Thursday 10 March

**WATERLOO LIBRARY BOOK GROUP**

6.30pm; free

The group is reading *The Immortal Life of Henrietta Lacks* by Rebecca Skloot. Contact librarian Stephen Males on 020 7926 8751 for further details.

→ Full info at [se1.net/10550](http://se1.net/10550)

## Woolfson &amp; Tay

12 Bermondsey Square

T 020 7407 9316

[www.woolfsonandtay.com](http://www.woolfsonandtay.com)

Thursday 3 March

**JONATHAN KEMP: LONDON TRIPTYCH**

7pm-9pm; £5 (conc £3)

Author Jonathan Kemp speaks about his bold debut novel which interweaves the lives and loves of three men in three distinct and pertinent historical periods.

→ Full info at [se1.net/10464](http://se1.net/10464)

Sunday 6 March

**ISRAEL-PALESTINE: LIFE IN A CONFLICT ZONE**

4pm; £5 (conc £3)

To launch the photographic exhibition *Struggling To Share The Promised Land* by David Lurie and creative exhibition *Living In Conflict* by Martyn Stanton Harris, Woolfson & Tay presents artist Martyn Stanton Harris, Israeli director, poet and writer Shira Geffen, Palestinian journalist and writer Rabai al-Madhoun and comedian Ivor Dembina. Event includes screening of *What About Me?* There will be a panel discussion moderated by writer and editor Shaun Levin.

→ Full info at [se1.net/10570](http://se1.net/10570)

Tuesday 15 March

**BREAKING THE SILENCE: WOMEN & SELF-CENSORSHIP**

7pm; £5 (conc £3)

To celebrate International Women's Day, W&T hosts a Penguin Books event with renowned authors Naomi Alderman, Sarah Blake and Elif Shafak. Guardian journalist Homa Khaledi will chair a panel discussion on the topics of 'Breaking The Silence' about women and self-censorship.

→ Full info at [se1.net/10571](http://se1.net/10571)

Thursday 17 March

**AN EVENING WITH MICHAEL ARDITI**

7pm; £5 (conc £3)

Author Michael Arditi will discuss his work and his latest novel *Jubilate* in conversation with writer Rosemary Furler. His previous novels include *The Celibate*, *Easter*, and *The Enemy of the Good*. Easter was winner of the Mardi Gras & Waterstone's Book Award 2000 and longlisted for the Costa Novel Award. There will also be a Q&A with the author and a book-signing session.

→ Full info at [se1.net/10566](http://se1.net/10566)

## Guided walks

## Living Memory heritage project

Saturday 5 March

**WOMEN'S HISTORY WALK**

11am; free; booking essential: 020 7021

1600 or l.cowell@coinstreet.org

A walk around Borough and North Southwark looking at women of



historical significance from the area as part of celebrations for International Women's Day. Both men and women welcome to attend the walk.  
→ Full info at [se1.net/10526](http://se1.net/10526)

Sunday 20 March  
**STAMFORD STREET & THE CUT WALK**

10.30am; free; booking essential: 020 7021 1600 or [l.cowell@coinstreet.org](mailto:l.cowell@coinstreet.org)  
A walk taking in the history of Stamford Street and The Cut.  
→ Full info at [se1.net/10527](http://se1.net/10527)

Church services

Welsh Chapel

90 Southwark Bridge Road  
[welshchapel.com](http://welshchapel.com)

Sunday 6 March  
**ST DAVID'S DAY SERVICE**

11am; free  
Bilingual family service for St David's Day led by the Rt Hon Simon Hughes MP. Two choirs will be taking part in the service.  
→ Full info at [se1.net/10547](http://se1.net/10547)

Comedy

The Miller

96 Snowsfields  
[www.themiller.co.uk](http://www.themiller.co.uk)

Tuesday 8 March  
**FUNSTUFF AND THE MAYDAYS**

8pm; £5  
Award winning Improv from the Maydays with Funstuff in the first half.  
→ Full info at [se1.net/10564](http://se1.net/10564)

Music

**Coin Street Neighbourhood Centre**  
108 Stamford Street T 020 7021 1600  
[www.coinstreet.org](http://www.coinstreet.org)

Wednesday 2 March  
**VOICELAB TASTER SESSION**

7pm-9pm; booking essential: 020 7021 1600 or [l.cowell@coinstreet.org](mailto:l.cowell@coinstreet.org); free  
Voicelab, Southbank Centre's vocal initiative, invites adults to come and join in with a free singing workshop led by Mary King, Voicelab director and internationally acclaimed vocal artist and star of Channel 4's Musicality and Opportunity. No previous singing experience required.  
→ Full info at [se1.net/10528](http://se1.net/10528)

**St George the Martyr**

Borough High Street T 020 7357 7331  
[www.stgeorge-themartyr.co.uk](http://www.stgeorge-themartyr.co.uk)

Thursday 24 March  
**THE PALLAS QUARTET**

7pm; free  
An evening of chamber music: Haydn String Quartet in D, Op. 20 No.4 Debussy String Quartet in G minor, Op. 10 Mozart String Quintet in G minor, K 516 (with Sophie Davenport)  
→ Full info at [se1.net/10554](http://se1.net/10554)

**SPANISH LESSONS**

- Learn one to one/In small groups/ Tailor-made lessons
- Qualified Spaniard—20 years experience +
- Testimonials available

Raquel Hernández 020 7407 1711  
[raquelarohanui@gmail.com](mailto:raquelarohanui@gmail.com)

**ELECTRICIAN**  
No job too small!  
07850 767283  
020 8761 6012  
[angelo@glennies.net](mailto:angelo@glennies.net)

Theatre

**Menier Chocolate Factory**

51 Southwark Street T 020 7907 7060  
[www.menierchocolatefactory.com](http://www.menierchocolatefactory.com)

Until Saturday 19 March  
**RUBY WAX - LOSING IT**

Tue-Sat 8pm; Sat & Sun 3.30pm; £25  
In this hilarious and sometimes dark show Ruby Wax – from the point of view of one of the one in four – discusses the toxins of our time: envy, fame, television, the insatiable drive to win, getting rich, getting the perfect body, marriage, kids, career and above all staying busy while looking like you're having a nice day. 35 pence from every ticket sold for the show will be donated to Comic Relief to contribute to their work with members of the community affected by mental health issues.  
→ Full info at [se1.net/10411](http://se1.net/10411)

**National Theatre**

South Bank T 020 7452 3000  
[www.nationaltheatre.org.uk](http://www.nationaltheatre.org.uk)

Until Sunday 13 March  
**SEASON'S GREETINGS**

Lyttelton Theatre; In repertory; £10-£44  
Alan Ayckbourn's masterly play offers a seriously entertaining look at the misery and high jinks of an average family Christmas.  
→ Full info at [se1.net/10021](http://se1.net/10021)

Until Saturday 2 April  
**GREENLAND**

Lyttelton Theatre; In repertory; £12-£30  
A new play about uncertainty, confusion and the future of everything, by Moira Buffini, Matt Charman, Penelope Skinner and Jack Thorne.  
→ Full info at [se1.net/10215](http://se1.net/10215)

Until Monday 2 May  
**FRANKENSTEIN**

Olivier Theatre; In repertory; £12-£45  
Danny Boyle directs a new play by Nick Dear based on the novel by Mary Shelley. Benedict Cumberbatch and Jonny Lee Miller will alternate the roles of Victor Frankenstein and the Creature. Suitable only for ages 15+  
→ Full info at [se1.net/10216](http://se1.net/10216)

Wednesday 23 March to Tuesday 21 June  
**ROCKET TO THE MOON**

Lyttelton Theatre; In repertory; £12-£45  
Angus Jackson directs the 1938 play by Clifford Odets. Stunning, stockingless, ruthless in her youth, Cleo Singer arrives in Ben Stark's dental practice and turns his married, humdrum world upside down.  
→ Full info at [se1.net/10218](http://se1.net/10218)

Until Friday 24 June  
**THE HOLY ROSENBERGS**

Cottesloe Theatre; In repertory  
Laurie Sansom directs a new play by Ryan Craig exploring tribal loyalties, the culpability of family and the consequences of standing up for what you believe to be right. The cast includes Henry Goodman.  
→ Full info at [se1.net/10217](http://se1.net/10217)

**Network Theatre**

246a Lower Road  
[www.networktheatre.org](http://www.networktheatre.org)

Wednesday 2 to Saturday 5 March  
**REVENGE OF THE AMAZONS**

7.30pm; £10  
Revenge of the Amazons is a pantomime romp through a feminist Shakespearean's dream. A women's theatre group tries to persuade Hippolyta not to marry, and Oberon falls in love with a feminist bunny girl. Written for fun, mostly to provide more comic parts for women and a better share of the famous lines.  
→ Full info at [se1.net/10344](http://se1.net/10344)

**Old Operating Theatre, Museum and Herb Garret**

9a St Thomas Street T 020 7188 2679  
[www.thegarret.org.uk](http://www.thegarret.org.uk)

Until Saturday 12 March  
**WHOSE BLOOD**

7pm (Sat 6pm); £10 (conc £6) from [www.whoseblood.com](http://www.whoseblood.com) or 020 8507 5607  
World premiere of the play Whose Blood by award-winning playwright Alex Burger. Enter an authentic 19th century operating theatre, sit in the halls where thousands went under the knife and few survived.  
→ Full info at [se1.net/10448](http://se1.net/10448)

**Rose Theatre Exhibition**

56 Park Street  
[www.rosetheatre.org.uk](http://www.rosetheatre.org.uk)

Until Saturday 5 March  
**EDWARD II**

Mon-Sat 7.30pm; Sun 3pm; £10 (conc £8) from 020 7261 9565 or [boxoffice@rosetheatre.org.uk](mailto:boxoffice@rosetheatre.org.uk)  
This rarely performed classic by Christopher Marlowe is a thrillingly crafted bloody tale of love, lust, betrayal and class conflict.  
→ Full info at [se1.net/10431](http://se1.net/10431)

Monday 14, 21 & 28 March  
**A CENTURY OF GREAT WOMEN**

7.30pm; £10 (conc £8) from 020 7261 9565 or [boxoffice@rosetheatre.org.uk](mailto:boxoffice@rosetheatre.org.uk)  
Celebrating the centenary of International Women's Day, and Women's History Month, three4alltheatre presents an evening featuring the words and writings of women who have shaped our lives, for better or for worse.  
→ Full info at [se1.net/10585](http://se1.net/10585)

Wednesday 9 March to Saturday 2 April  
**ANTHONY AND CLEOPATRA**

Times TBC; £10 (conc £8) from 020 7261 9565 or [boxoffice@rosetheatre.org.uk](mailto:boxoffice@rosetheatre.org.uk)  
One of Shakespeare's greatest tragic epics. A fusion of historical fact and beautifully written drama, set against the backdrop of Ancient Rome and Egyptian politics.  
→ Full info at [se1.net/10432](http://se1.net/10432)

**Shakespeare's Globe**

New Globe Walk T 020 7401 9919  
[www.shakespeares-globe.org](http://www.shakespeares-globe.org)

Thursday 17 March  
**OUR THEATRE: THE TEMPEST**

1pm; email [community@shakespearesglobe.com](mailto:community@shakespearesglobe.com) for a ticket; free  
Students from 14 Southwark schools work with their teachers and Globe Education

practitioners to create an ensemble performance recreating Prospero's island on the Globe stage.  
→ Full info at [se1.net/10583](http://se1.net/10583)

**Southwark Playhouse**

Shipwright Yard T 020 7407 0234  
[www.southwarkplayhouse.co.uk](http://www.southwarkplayhouse.co.uk)

Until Friday 11 March  
**COMPANY**

Tue-Sat 7.30pm; Sat & Sun 3.30pm; £10/£16.50/£22.50 (airline-style)  
Following the success of Sondheim's 80th birthday celebrations in 2010, this musical comedy based on modern relationships will be revived in 2011 starring Rupert Young as Bobby, joined by a cast of musical theatre favourites including Olivier-nominated Siobhan McCarthy as Joanne. The first major revival of Stephen Sondheim's classic on the London stage in more than 15 years, Company is directed by Joe Fredericks with musical direction and arrangement by Oliver Jackson and choreography by Sam Spencer-Lane.  
→ Full info at [se1.net/10341](http://se1.net/10341)

Tuesday 22 March to Wednesday 6 April  
**SUNDAY MORNING AT THE CENTRE OF THE WORLD**

The Vault; Tue-Sat 7.30pm; Sat 3pm; £6, £11, £16

Influenced by Dylan Thomas' seminal piece *Under Milk Wood*, it is homage to a period of Louis de Bernieres' life in Earlsfield, South London and has never been performed live by a professional cast. This unique production by Bad Physics will be a 60-minute sensory experience featuring a cast of eight. Blindfolded for the duration of the piece, half of the audience will choose to experience the play not only through hearing the dialogue, but also through the exhilaration of live sound effects, smells and touch. The rest of the audience will watch this played out in front of them as a performance within a performance, witnessing the effects created as well as the reactions of the audience experiencing them.  
→ Full info at [se1.net/10578](http://se1.net/10578)

Tuesday 15 March to Saturday 9 April  
**EIGHT WOMEN**

Tue-Sat 7.30pm; Sat 3pm; £8, £13, £18  
Robert Thomas' play *Huit Femmes* was originally written for the stage in 1961, turning a classic whodunnit inside out to reveal twisted family relationships, explosive tensions and unexpected tales within this dark observational comedy. Transformed into an all-star film by Francois Ozon in 2002, *Eight Women* has now been reclaimed for the stage in a brand new translation by Donald Sturrock for its official British premiere at Southwark Playhouse. Elgiva Field and designer Anna Bliss Scully have transported *Eight Women* to England in the 1980s when Dallas and Dynasty reigned supreme and back stabbing and being competitive was de rigueur.  
→ Full info at [se1.net/10441](http://se1.net/10441)

Wednesday 16 March to Tuesday 19 April  
**THEATRE UNCUT**

The Vault; 7.30pm; £5.50  
New short plays by Mark Ravenhill, David Greig, Dennis Kelly, Jack Thorne, Lucy Kirkwood and others in response

**londonSE1**  
community website

- Fantastic Mr Fox!**  
Northern Soul, London Bridge  
**Wabi Shebele**  
Chambers Wharf  
**Metro Central Heights**  
Blackfriars Bridge Cycle Lane  
**Dickens Square**  
Hungarians in SE1  
**Paterson Park Controlled Parking Zone**  
Bus 63 crowding

**Some recent forum topics**

- Odd Animal Noises**  
Vintage markets in SE1  
**Rehoming a rescue cat**  
Snowsfields holiday club  
...and dozens more  
join the debate at  
[www.London-SE1.co.uk](http://www.London-SE1.co.uk)

[ SE1 Direct ]  
[www.SE1direct.co.uk](http://www.SE1direct.co.uk)

With more than 7,200 subscribers across SE1 and beyond, can you afford to miss out on our Monday morning email updates?

to the country-wide spending cuts. Any profits from ticket sales will be donated to the Child Poverty Action Group, who campaign to make benefits available to those who need them, and have pledged to eradicate child poverty in the UK by 2020.

→ Full info at [se1.net/10579](http://se1.net/10579)

#### The Old Vic

103 The Cut T 0870 060 6628  
[www.oldvictheatre.com](http://www.oldvictheatre.com)

Thursday 17 March to Saturday 11 June

#### CAUSE CELEBRE

Times vary; £15-£48.50

Terence Rattigan's final play is staged as part of celebrations of the centenary of his birth. Directed by Thea Sharrock, *Cause Celebre* is based on the true story of Alma Rattenbury who went on trial with her 18-year-old lover for the murder of her husband. Condemned by the public more for her seduction of a young boy than for any involvement she may have had in her husband's death, Alma's fate is left in the hands of the socially and sexually repressed jury forewoman, Edith.

→ Full info at [se1.net/9454](http://se1.net/9454)

#### Unicorn Theatre

147 Tooley Street T 020 7645 0560  
[www.unicorntheatre.com](http://www.unicorntheatre.com)

Tuesday 22 to Sunday 27 March

#### THE BIRTHDAY OF THE INFANTA

times vary; £11 (conc £9)

Adults and young people alike are invited by the Infanta, the Spanish princess, to her twelfth birthday party. This is the only day of the year she is allowed to play with other children, but mixing with those not of her own rank comes at a price. Adapted by Carl Miller from the bittersweet story by Oscar Wilde and performed in Trestle's unique physical style, *The Birthday of the Infanta* captures a transitional moment of choice when the heart could melt or freeze. For ages 9+

→ Full info at [se1.net/10581](http://se1.net/10581)

Tuesday 29 to Wednesday 30 March

#### THE DAY THE WATERS CAME

times vary; £11 (conc £9)

*The Day the Waters Came* returns to the Unicorn following a successful run in October 2010. It's summer 2005. Maya Marsalis takes you by the hand - sometimes the throat - and leads you through her landscape on the day Hurricane Katrina came, the levees broke, the world watched and the US Government did nothing. Go with her as she shows you how her world and that of thousands of black American citizens changed forever on the day the waters came. For ages 13+

→ Full info at [se1.net/10582](http://se1.net/10582)

#### Union Theatre

204 Union Street T 020 7261 9876  
[www.uniontheatre.biz](http://www.uniontheatre.biz)

Until Saturday 5 March

#### IRISH BLOOD, ENGLISH HEART

Tue-Sat 7.30pm; £13 (Tue £10)

In a mysterious garage in Southwark Con Sweeney and his wife Peggy ask Con's brother, the infamous comedian turned author Ray Suede, to meet to divvy up the emotional legacy of their estranged father. Ray's just written a book. About their father. About them. Peggy thinks that if Ray wants to portray them as cartoon troglodytes, then he should pay cash money for the privilege. So, who gets to tell the story of two second generation Irish brothers, a teenage tear up merchant, and a dead London cabbie in a dusty South London lock-up? Written by Darren Murphy. Directed by Caitriona McLaughlin.

→ Full info at [se1.net/10428](http://se1.net/10428)

Tuesday 8 to Saturday 12 March

#### I LOVE YOU, YOU'RE PERFECT, NOW CHANGE

7.30pm; £15

From the first awkward kiss to that unbearable kiss goodbye, this popular musical review follows the ups and downs of a modern romantic relationship whilst attempting to answer some of life's most infuriating questions.

→ Full info at [se1.net/10316](http://se1.net/10316)

Tuesday 15 March to Saturday 9 April

#### SHORT AND SWEET

Tue-Sat 7.30pm; £13

The Union Theatre has been working in conjunction with New York's Secret Theatre in order to bring scripts from the Big Apple to London. *Short and Sweet* showcases a selection of new comedy writers from Britain and America. The Secret Theatre recently ran a playwriting competition for short scripts, with the winning script and the runner-up being given a London run at The Union Theatre.

→ Full info at [se1.net/10592](http://se1.net/10592)

#### Waterloo East Theatre

Brad Street T 020 7928 0060  
[www.waterlooeast.co.uk](http://www.waterlooeast.co.uk)

Tuesday 8 March to Saturday 2 April

#### THE WATCHER

Tue-Sat 7.30pm; Sat 4pm; £15 (conc £12);

pay what you can on 10 March

Donna Air stars in BAFTA and EMMY award-winning writer Jeremy Paul's psychological drama. A woman, alone in a park, is sunbathing. A stranger appears and watches. Through a series of twists and turns an uneasy power struggle intensifies and a truth is revealed. But who is watching whom? And why? Donna Air performs in this two-handed play with Jon Shaw, directed by Roger Martin and produced by Fresh Look Theatre. Donna's past work on TV includes *Byker Grove*, *Hotel Babylon* and *Supply and Demand* for the BBC, and in theatre *The Vagina Monologues* at the New Ambassadors.

→ Full info at [se1.net/10433](http://se1.net/10433)

#### Young Vic

66 The Cut T 020 7928 6363  
[www.youngvic.org](http://www.youngvic.org)

Until Saturday 12 March

#### VERNON GOD LITTLE

Mon-Sat 7.30pm; Wed & Sat 2.30pm; £10, £15, £22.50, £27.50; previews £10 & £15

Rufus Norris' Olivier Award-nominated production of DBC Pierre's Booker Prize-winning *Vernon God Little* returns. The stage adaptation is by Tanya Ronder. It's Friday at the Sherriff's office. Vernon sits in his underpants, staring at his Nikes. His best friend Jesus went and gunned down all their classmates, then himself. Normal times just ran howling out of town. Desperate, cynical and gloriously unlucky, Vernon makes a manic escape to Mexico. As the cowboy music starts to play, the absurdities of life just keep on coming.

→ Full info at [se1.net/9520](http://se1.net/9520)

Until Saturday 12 March

#### AND THE RAIN FALLS DOWN

The Maria; Mon-Thu 10.30am & 1.30pm;

Fri 1.30pm & 4.30pm; Sat 11am & 2pm;

Adults £10 (child £8)

*Fevered Sleep*, the creators of *The Forest* and *Brilliant* (Young Vic/ Lyric Hammersmith/tour) return with a show about drips, drops and downpours created especially for 3 and 4 year olds. Imagine a world where every drop of water has a life of its own. Imagine a place where rainbows form from umbrellas, where fountains spout from plugholes, and were eventually the rain really does fall down. *And the Rain Falls Down* is a visually stunning celebration of the watery things of the world.

→ Full info at [se1.net/9521](http://se1.net/9521)

Thursday 24 March to Saturday 9 April

#### THE RETURN OF ULYSSES

7pm; £40 & £30

ENO and the Young Vic continue their South Bank Show Award-winning partnership with a new production of Monteverdi's epic opera, by internationally lauded director Benedict Andrews (A Streetcar Named Desire, Berlin Schaubhne; War of the Roses, Sydney Theatre Company). *The Return of Ulysses* is based on the final section of Homer's *Odyssey*. It was composed in 1640 by Monteverdi, who is regarded as the inventor of opera as we know it. Ulysses returns home to Ithaca after his long journey back from the Trojan Wars to find villainous suitors have plundered his home and seized his wife, Queen Penelope. Aided by the Gods, his son Telemachus and faithful friend Eumaeus, he must overcome the suitors and recover

his kingdom. The cast includes opera stars Tom Randle as Ulysses and Pamela Helen Stephen as Penelope.

→ Full info at [se1.net/9522](http://se1.net/9522)

Wednesday 30 March to Saturday 16 April

#### TERMINUS

7.45pm; £17.50

After great success at Ireland's Abbey Theatre, a hit international tour and a Scotsman Fringe First Award at Edinburgh, Mark O'Rowe (*Boy A*, *Intermission*, *Howie The Rookie*) brings his exhilarating urban fantasy to the Young Vic. The streets of Dublin - and the skies above - are the scene for an extraordinary chain of events, as three lives collide over a single unforgettable night of temptation, damnation, rebirth and redemption. Lovesick demons, avenging angels and golden-voiced serial killers combine and conspire to alter these three lives forever.

→ Full info at [se1.net/10408](http://se1.net/10408)

## Cinema

#### Bankside Community Space

18 Great Guildford Street

Friday 11 March

#### OTTICA TV ANNUAL SCREENING

6pm-9pm; free

Contemporary art channel Otica TV holds its informal annual screening of contributors' work. Each 5 minute short will be preceded by a short statement by the author. Breaks for tea and chat at 7 and 8pm.

→ Full info at [se1.net/10535](http://se1.net/10535)

#### Shortwave Cinema

10 Bermondsey Square T 020 7357 6845  
[www.shortwavefilms.co.uk](http://www.shortwavefilms.co.uk)

Wednesday 2 to Thursday 3 March

#### MONSTERS

8pm; £8 (conc £7)

Six years ago NASA probe was launched to collect samples of alien life, but crashed upon re-entry over Central America. Soon after, new life forms began to appear there and half of Mexico was quarantined as an 'infected zone'. Today, the military still struggle to contain 'the creatures'. An American tourist and a reluctant journalist must cross the infected zone to the safety of the US border. Director: Gareth Edwards. Starring: Whitney Able, Scoot McNairy

→ Full info at [se1.net/10555](http://se1.net/10555)

Friday 4 to Friday 18 March

#### WINTER'S BONE

Wed-Sun (times vary); £8 (conc £7)

17 year-old Ree Dolly embarks on a mission to find her father who has disappeared without a trace. Faced with the possibility of losing her home and being turned out into the woods, Ree challenges her outlaw kin's code of silence and risks her life to save her family. Multi award-winning and nominated for 4 Academy Awards. Director: Debra Granik. Starring: Jennifer Lawrence, John Hawkes

→ Full info at [se1.net/10556](http://se1.net/10556)

Friday 11 & Friday 18 March

#### ENTER THE VOID

9.30pm; £8 (conc £7)

Gaspar No directs this visionary cinematic thrill ride. Oscar and his sister Linda are recent arrivals in Tokyo. One night, Oscar is caught up in a police raid and shot. As he lies dying, his spirit, faithful to the promise to never leave his sister, refuses to abandon the world of the living and his visions grow into a hallucinatory maelstrom.

→ Full info at [se1.net/10557](http://se1.net/10557)

Saturday 19 March

#### COCKTAIL

8pm; £8 (conc £7)

Tom Cruise and Bryan Brown star as the cocktail-shaking duo in this eighties classic. Brian (Cruise) swaps his business school classes for lessons in cocktail-making from grizzled bartender Doug (Brown).

→ Full info at [se1.net/10559](http://se1.net/10559)

Friday 18 to Thursday 24 March

#### FATHERS OF GIRLS

Times vary; £8 (conc £7)

Ray Winstone stars in this powerful British drama as a loving father forced to confront uncomfortable truths about his grown up daughter.

→ Full info at [se1.net/10558](http://se1.net/10558)

Friday 25 to Thursday 31 March

#### UNCLE BOONMEE WHO CAN RECALL HIS PAST LIVES

Times vary; £8 (conc £7)

Uncle Boonmee has chosen to spend his final days surrounded by his loved ones in the remote forest, an important place from his childhood and, he believes, the possible location of his former existences. Eerie, poetic and masterful, *Uncle Boonmee Who Can Recall His Past Lives* creates an enchanted world where fauna and flora converge to convey a magical, sublime atmosphere. Director: Apichatpong Weerasethakul. Starring: Sakda Kaewbuadee, Jenjira Pongpas.

→ Full info at [se1.net/10560](http://se1.net/10560)

#### Tate Modern

Bankside T 020 7887 8888  
[www.tate.org.uk/modern](http://www.tate.org.uk/modern)

Monday 14 March

#### WONDERLAND COMMUNITY FILM CLUB

Starr Auditorium; 7pm (refreshments

from 6.30pm); free to members  
Michael Winterbottom's 1999 drama. Membership of the Community Film Club is aimed at those living in Southwark and Lambeth. To become a member (it's free) email [communityfilmclub@tate.org.uk](mailto:communityfilmclub@tate.org.uk) or join at door.

→ Full info at [se1.net/10327](http://se1.net/10327)

Follow us  
on Twitter

[twitter.com/se1](http://twitter.com/se1)

## Next month in SE1

Next month's highlights include:

- Chocolate Festival
- Easter holiday events
- Celebrating Shakespeare
- Royal Wedding weekend
- Festival of Britain anniversary celebrations

...all that and more in our next issue out on 1 April

## Exhibitions

### Alma Enterprises

38-40 Glasshill Street  
www.almaenterprises.com  
Sat & Sun 12 noon-6pm or Fri by  
appointment; free

Until Sunday 27 March  
**CHARLIE TWEED: NOTES I, II & III**  
The seven short videos which make up Notes interrogate complex systems of fear in an attempt to logistically and manage all forms of life. The 'voice' of the videos appears to come from an ever present but anonymous collective which is orchestrating change on a mass scale.  
→ Full info at [se1.net/10576](http://se1.net/10576)

### ASC Gallery

Erlang House, 128 Blackfriars Road  
Mon-Sat 1.30pm-5pm; free

Until Saturday 19 March  
**THE LIE OF THE LAND**  
Alejandro Pintado, Ambrosine Allen and Jane Ward  
→ Full info at [se1.net/10425](http://se1.net/10425)

Thursday 24 March to Thursday 19 May  
**CROSSING CENTURIES: WORKS BY WOMEN ARTISTS 1830-2000**  
Celebrating a century of International Women's Day, this exhibition highlights historic, modern and contemporary work by women artists in the Southwark Art Collection.  
→ Full info at [se1.net/10588](http://se1.net/10588)

### Bankside Gallery

48 Hopton Street T 020 7928 7521  
www.banksidegallery.com  
Daily 11am-6pm; free

Until Thursday 10 March  
**ROYAL WATERCOLOUR SOCIETY OPEN EXHIBITION**  
The competition aims to promote alternative approaches that build on watercolour's inherent strengths. Come and view the results.  
→ Full info at [se1.net/10483](http://se1.net/10483)

Friday 18 March to Friday 15 April  
**ROYAL WATERCOLOUR SOCIETY SPRING EXHIBITION**  
An exhibition by Society members with featured artist Diana Armfield RA.  
→ Full info at [se1.net/10504](http://se1.net/10504)

### BFI Southbank

Belvedere Road T 020 7928 3535  
www.bfi.org.uk/southbank  
Gallery Tue-Sat 11am-8pm; free

Until Sunday 3 April  
**PHIL COLLINS: MARXISM TODAY**  
Collins' short film mixes contemporary interviews with ex-teachers alongside archive material in which snapshots of life in the old GDR are offset with the teachers' own recollections of the time, and their contrasting experiences after the fall of the Berlin Wall in 1989.  
→ Full info at [se1.net/10386](http://se1.net/10386)

### Design Museum

Shad Thames T 0870 909 9009  
www.designmuseum.org  
Daily 10am-5.45pm (last admission 5.15pm); £10 (conc £9; students 6); Under 12s free

Until Sunday 6 March  
**DRAWING FASHION**  
Some of the most remarkable fashion illustrations from the 20th and 21st centuries.  
→ Full info at [se1.net/7935](http://se1.net/7935)

Wednesday 30 March to Sunday 3 July  
**WIM CROWLEW**  
The prolific career of the Dutch graphic designer.  
→ Full info at [se1.net/9960](http://se1.net/9960)

Until Sunday 7 August  
**BRIT INSURANCE DESIGNS OF THE YEAR 2011**  
This annual exhibition has established itself as a leading showcase of the most innovative and forward thinking designs from around the world, supporting the critically acclaimed Brit Insurance Design Awards.  
→ Full info at [se1.net/9959](http://se1.net/9959)

### Fashion & Textile Museum

83 Bermondsey Street T 020 7407 8664  
www.ftmlondon.org  
Exhibitions Wed-Sun 11am-6pm; £7  
(conc £4); under-12s free

Until Monday 25 April  
**SUE TIMNEY AND THE ART OF TIMNEY-FOWLER**  
Sue Timney is the celebrated designer whose company, Timney-Fowler, is best known for its distinctive graphic black and white imagery.  
→ Full info at [se1.net/7750](http://se1.net/7750)

### gallery@oxo

Oxo Tower Wharf T 020 7021 1686  
www.coinstreet.org  
Daily 11am-6pm; free

Wednesday 16 to Sunday 27 March  
**SHIFTING PERSPECTIVES 2011**  
The powerful work of the Shifting Perspectives team explores the photographic representation of people with Down's syndrome, challenging attitudes and prejudices and examining alternative representations of both adults, children and the unborn.  
→ Full info at [se1.net/10495](http://se1.net/10495)

### Garden Museum

Lambeth Palace Road T 020 7401 8865  
www.gardenmuseum.org.uk  
Daily 10.30am-5pm (closed 1st Mon of  
month); £6 (conc £5; under-16s free)

Until Sunday 6 March  
**HERBARIUM VOL. II: DARK SEASON FIELDWORK**  
Photography and plant specimens gathered on research projects in locations such as Calais, Copenhagen, Malmo, and the Isle of Thanet, Kent.  
→ Full info at [se1.net/10317](http://se1.net/10317)

### Hayward Gallery

Southbank Centre T 020 7921 0813  
www.southbankcentre.co.uk/visualarts  
Daily 10am-6pm (Thu & Fri till 8pm)

Until Sunday 17 April  
**THE BRITISH ART SHOW: IN THE DAYS OF THE COMET**  
£8 (conc £7; child £5.50)  
A major survey exhibition organised by Hayward Touring Exhibitions, the show takes place every five years and tours to four different cities across the UK.  
→ Full info at [se1.net/10070](http://se1.net/10070)

Saturday 12 March to Monday 2 May  
**ROYAL FAMILY**  
Project Space; free  
Contemporary artists' representations of the House of Windsor.  
→ Full info at [se1.net/10551](http://se1.net/10551)

### Imperial War Museum

Lambeth Road T 020 7416 5000  
london.iwm.org.uk  
Daily 10am-6pm; free

Until Sunday 6 March  
**NIGHT VISIONS**  
The danger and disorientation of the Blackout, the terror of night raids and new encounters with a strange nocturnal landscape provided fertile subject matter for British artists during the Second World War.  
→ Full info at [se1.net/10151](http://se1.net/10151)

Until Sunday 4 September  
**OUTBREAK 1939**  
The build-up and preparations for war, an hour-by-hour countdown of events on 3 September 1939 and a look at the early months of the conflict.  
→ Full info at [se1.net/6283](http://se1.net/6283)

Until Sunday 30 October  
**ONCE UPON A WARTIME: CLASSIC WAR STORIES FOR CHILDREN**  
£5.95 (conc £4.95; child £3.95; family £12.50)  
This exhibition delves into the pages of well-loved books, bringing five stories of war dramatically to life.  
→ Full info at [se1.net/10155](http://se1.net/10155)

### Llewellyn Alexander Fine Paintings

124-126 The Cut T 020 7620 1322  
www.llewellynalexander.com  
Mon-Sat 10am-7.30pm; free

Until Friday 11 March  
**JENNY WHEATLEY NEAC RWS**  
→ Full info at [se1.net/10319](http://se1.net/10319)

Monday 14 March to Saturday 23 April  
**JEREMY BARLOW**  
Major exhibition of over 80 new oils of France and Italy as well as the Norfolk countryside. Dramatic effects of light and dark combine with a mastery of composition.  
→ Full info at [se1.net/10032](http://se1.net/10032)

### Morley College

61 Westminster Bridge Road T 020 7928 8501  
www.morleycollege.ac.uk  
Gallery Mon-Fri 11am-6pm; Thu until  
7pm; Sat enquire for details;

Until Thursday 10 March  
**MADE 2011: PART 1 - PRINTMAKING & BOOKBINDING**  
100+ prints including etchings, relief printing, collographs, lithographs and photo etchings.  
→ Full info at [se1.net/10453](http://se1.net/10453)

Thursday 17 March to Thursday 7 April  
**MADE 2011: PART 2 - CERAMICS & PAPERMAKING**  
The exhibition shows the finest work of ceramic and papermaking students.  
→ Full info at [se1.net/10519](http://se1.net/10519)

### National Theatre

South Bank T 020 7452 3000  
www.nationaltheatre.org.uk  
Foyers open Mon-Sat 9.30am-11pm; Sun  
12 noon-6pm; free

Until Sunday 20 March  
**ANGELHEADED HIPSTERS**  
Trace the early years of Ginsberg, Jack Kerouac and William Burroughs as they moved towards the centre of the American literary consciousness.  
→ Full info at [se1.net/10219](http://se1.net/10219)

Monday 14 March to Sunday 8 May  
**POSTCARDS FROM THE FUTURE**  
Straight from its showing at the Museum of London, an exhibition of arresting images depicting how London may look if we do not take action against the threat of climate change.  
→ Full info at [se1.net/10577](http://se1.net/10577)

### Nolia's Gallery 2

60 Great Suffolk Street T 020 7701 9111  
www.noliagallery.co.uk

Until Friday 25 March  
**OUTSIDER ARTIST INSIDE NOLIAS**  
Tue-Sun 2pm-8pm  
Figurative painter Edgeworth Johnstone.  
→ Full info at [se1.net/10440](http://se1.net/10440)

Saturday 26 to Sunday 27 March  
**48 HOURS: PAINTING, PHOTO, VIDEO & 3D**  
11am to 5pm; free  
Paintings, photography, video and 3D by ten south London artists: Joan Byrne, Chris Clack, Nick Cobb, Gin Dunscombe, Marion Michell, Phil Polglaze, Pia Randall-Goddard, David Randall-Goddard, Caroline Wright and Jacqueline Utley.  
→ Full info at [se1.net/10516](http://se1.net/10516)

### Poppy Sebire Gallery

Copperfield Street  
Tue-Sat 10am-6pm; free

Friday 11 March to Saturday 9 April  
**PLAYER PLAYER PLAYER**  
Six artists who use wit, slapstick, and a healthy sense of the absurd to come at the world from a fresh and playful angle.  
→ Full info at [se1.net/10575](http://se1.net/10575)

### Poussin Gallery

175 Bermondsey Street T 020 7403 4444  
www.poussin-gallery.com  
Tue-Sat 11am-6pm; free

Until Saturday 12 March  
**HIGH-ABSTRACT**  
An exhibition of high-ambition, high-complexity abstract painting and sculpture 1960-2010.  
→ Full info at [se1.net/10304](http://se1.net/10304)

### Siobhan Davies Studios

85 St George's Road  
www.siobhandavies.com  
Mon-Thu 10am-8pm; Fri & Sat  
10am-5pm; free

Until Saturday 12 March  
**LIGHTS ON**  
Light installations located around the building which take full advantage of the darkness of the winter days.  
→ Full info at [se1.net/10382](http://se1.net/10382)

Friday 18 March to Saturday 9 April  
**STILL MOVING**  
A touring exhibition which investigates choreography as a stimulus for photography and film.  
→ Full info at [se1.net/10383](http://se1.net/10383)

### Southwark Cathedral

London Bridge T 020 7367 6700  
www.southwarkcathedral.org.uk  
Cathedral daily 8am-6pm; Refectory  
Mon-Fri 8.30am-6pm; Sat & Sun  
10am-6pm; free

Until Monday 28 March  
**LONDON LIGHT**  
An exhibition of 13 acrylic paintings and 8 prints by Caroline Tate. She is the great great granddaughter of Sir Henry Tate, the founder of the Tate Gallery.  
→ Full info at [se1.net/10484](http://se1.net/10484)

Wednesday 9 March to Sunday 12 June  
**THE THORNFLOWER**  
Charlotte Mayer's sculpture is an attempt to reconcile two diametrically opposed elements. The thorns, sharp and cruel, are cut in stainless steel. The flowers, modelled in wax and cast in bronze, are soft and embracing. The sculpture grows from a circular base that speaks of their fundamental unity.  
→ Full info at [se1.net/10520](http://se1.net/10520)

### Tate Modern

Bankside T 020 7887 8888  
www.tate.org.uk/modern  
Sun-Thu 10am-6pm; Fri & Sat  
10am-10pm; free

Until Monday 11 April  
**GABRIEL OROZCO**  
£10 (conc £8.50)  
This retrospective of the leading Mexican artist Gabriel Orozco (b 1962) is the largest presentation of his most critically acclaimed works in the UK.  
→ Full info at [se1.net/9965](http://se1.net/9965)

### Unit 24

20 Great Guildford Street T 020 7401 2142  
unit24.info  
Mon-Wed 8am-5pm, Thu & Fri  
8am-6.30pm; free

Friday 4 March to Friday 15 April  
**THREADS**  
Kasia Morawska and Ania Cerelecak invited three international artists - Gjoj De Marco, Pawel Wocial and Linas Domarackas - to explore the theme of iconic markers of mythological archetypes.  
→ Full info at [se1.net/10574](http://se1.net/10574)

### Vitrine Gallery

Bermondsey Square  
www.vitrinegallery.co.uk  
24 hours; free

Thursday 3 to Sunday 27 March  
**ELLY THOMAS: TOY**  
A solo show of sculpture, installation and drawing in which works function as toys.  
→ Full info at [se1.net/10584](http://se1.net/10584)

### Woolfson & Tay

12 Bermondsey Square T 020 7407 9316  
www.woolfsonandtay.com  
Tue-Sat 11am-7pm; Sun 11am-3pm;

Until Sunday 20 March  
**STRUGGLING TO SHARE THE PROMISED LAND: DAVID LURIE**  
Between 1995 and 2001 photographer David Lurie documented life on the streets in the Palestinian territories and Israel.  
→ Full info at [se1.net/10461](http://se1.net/10461)

Until Sunday 20 March  
**LIVING IN CONFLICT: MARTYN STANTON HARRIS**  
A project about life in Israel and what impact this has on people who live under a daily threat of hostilities.  
→ Full info at [se1.net/10462](http://se1.net/10462)

Tuesday 22 March to Sunday 3 April  
**MUGABE'S VICTIMS: ZIMBABWE TODAY**  
The Prisoners of Conscience Appeal Fund, an SE1-based human rights charity, presents a compelling new photography exhibition focusing on the victims of political violence in Zimbabwe.  
→ Full info at [se1.net/10572](http://se1.net/10572)



## BOOK REVIEW

**Out of the Hay and into the Hops**

Hop cultivation in Wealden Kent and hop marketing in Southwark, 1744-2000

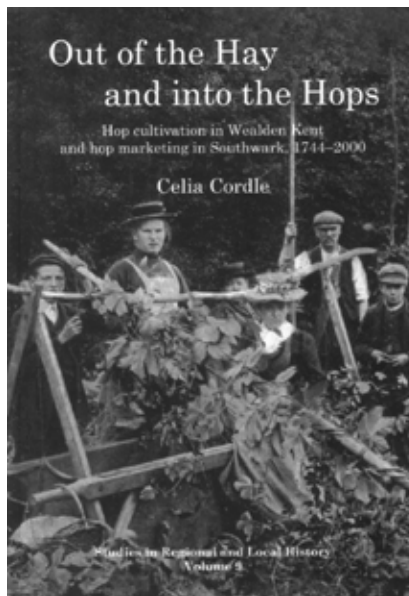
Celia Cordle • Hertfordshire University Press • £35

Award-winning historian Celia Cordle has turned her attention to the hop trade and writes from experience having lived in the Kent countryside with hop growers as neighbours. The farm had used hop poles rather than wire until the Second World War.

The Mar i Terra restaurant in Gambia Street was once the Hop Pole pub and Dr Cordle takes a close look at hop trading in the Borough from the time when it was still a Surrey town.

She describes the Borough High Street area as “the place of illicit trading and shady deals” with a “liberalistic reputation”. The hop trade was a natural development for as early as the Peasants Revolt in 1381 almost a quarter of the population was engaged in the drinks industry.

It seems that the many inns which provided bed and breakfast for those locked out of the City by the London Bridge gates became hop stores. The Queen's Head Yard was taken over by a hop and seed merchant in 1850. The King's



Head and Calvert's Buildings were part of the hop network.

We learn that hop grading could be delayed by fog or even river mist reducing visibility.

English hops were traded from about 1590. Four hundred years later in the 1890s Southwark was the specialist hop market with its ambitious Hop Exchange. After the invention of the telephone the local code was HOP.

“The Borough,” recalls Ben Wright, the last hop factor, “was the home of the hop trade...where everything went on... where everything was happening.”

Dr Cordle has produced a readable academic book with plenty of useful source references.

**WERE YOU A HOP PICKER?**

Producers on a new BBC series called *Reel History of Britain* are keen to make contact with

Londoners who have experience of hop picking or whose families have passed on stories from the time. *Reel History* is a 20-part series looking at the social history of Britain in the twentieth century through the use of original film. Some of the footage they have is of London hop pickers working on the farms of Kent. If you can help, email [reelhistory@bbc.co.uk](mailto:reelhistory@bbc.co.uk) or call 0161 244 3289.

## IPHONE APP

**Lambeth Palace app**

The highlights of Lambeth Palace Library's summer 2010 exhibition are now available in an iPhone app.

During Summer 2010 visitors were invited in to the London residence of the Archbishop of Canterbury to view a special exhibition of ‘Treasures of Lambeth Palace Library’. The library – founded in 1610 – describes itself as one of the earliest public libraries in England. The app features images of some the items which were exhibited and supporting commentary from the audio tour including an introduction from Dr Rowan Williams. The content of the app is limited, and the navigation is basic. Nonetheless, it is good news that the audio and images created for the exhibition will continue to be available to a wide audience for years to come.

**Find us on Facebook**

[facebook.com/londonse1](http://facebook.com/londonse1)

for the latest news & events

**Psychotherapy & Counselling**

Borough High Street SE1

Experienced Psychotherapist and Counsellor  
UKCP Registered.

I see people who suffer from Depression, Anxiety, Stress, work problems, addictions, loss and grief, low self esteem etc.

To arrange an initial consultation please call 07946 779813.

[www.malcolmpetersontherapy.co.uk](http://www.malcolmpetersontherapy.co.uk)

**[ SE1 Direct ]**

[www.SE1direct.co.uk](http://www.SE1direct.co.uk)

With more than 7,200 subscribers across SE1 and beyond, can you afford to miss out on our Monday morning email updates?

**londonSE1 community website****News you may have missed****Bankside electricity substation handed over to Tate Modern**

UK Power Networks has handed over half of its former electricity substation at Bankside to Tate Modern to allow the expansion of the gallery.

...more at [www.London-SE1.co.uk/n5133](http://www.London-SE1.co.uk/n5133)

**Simon Schama, Potters Fields Park and the 9/11 artwork**

Historian Simon Schama described the controversy about the proposed commemorative artwork for the 9/11 attacks in Potters Fields Park as “a collision of moral claims” at an emotionally charged consultation meeting last month.

...more at [www.London-SE1.co.uk/n5131](http://www.London-SE1.co.uk/n5131)

**Boris's latest Crossrail cash grab will hit Elephant regeneration says Southwark**

Southwark Council has warned that Boris Johnson's proposals to raise £300 million towards the cost of Crossrail from a community infrastructure levy could seriously reduce the amount of development, including affordable housing, at Elephant & Castle.

...more at [www.London-SE1.co.uk/n5129](http://www.London-SE1.co.uk/n5129)

**Fridge from rubbish depot goes on show at Design Museum**

A refrigerator discarded by a Southwark resident has been plucked from obscurity and given a starring role at the Brit Insurance Designs of the Year exhibition at the Design Museum.

...more at [www.London-SE1.co.uk/n5128](http://www.London-SE1.co.uk/n5128)

**Fr John O'Toole appointed dean of St George's Cathedral**

Canon James Cronin, dean of Southwark's RC Cathedral, has been appointed national director of the church's support organisation for overseas mission. Fr John O'Toole has been named as his successor at St George's.

...more at [www.London-SE1.co.uk/n5126](http://www.London-SE1.co.uk/n5126)

**Kevin Spacey's Big Society award for Old Vic Tunnels**

Old Vic artistic director Kevin Spacey visited 10 Downing Street last month to collect a Big Society Award from the prime minister.

...more at [www.London-SE1.co.uk/n5125](http://www.London-SE1.co.uk/n5125)

**17-storey Borough tower vetoed by inspector**

Plans for a 17-storey tower of student accommodation close to St George the Martyr church in Borough have been rejected by a planning inspector.

...more at [www.London-SE1.co.uk/n5124](http://www.London-SE1.co.uk/n5124)

**Simon Hughes: “a privilege” to be made a privy counsellor**

Simon Hughes visited Buckingham Palace last month to make his affirmation as a member of the Privy Council.

...more at [www.London-SE1.co.uk/n5120](http://www.London-SE1.co.uk/n5120)

**GP-led urgent care centre to open at Guy's Hospital**

NHS bosses have confirmed that they are working on plans for a new GP-led centre at Guy's Hospital to replace the existing minor injuries unit.

...more at [www.London-SE1.co.uk/n5117](http://www.London-SE1.co.uk/n5117)