

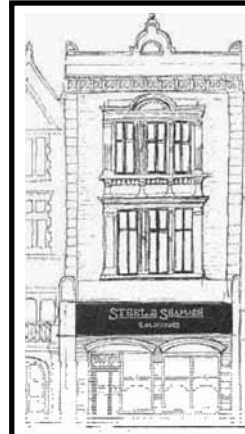
**THIS MONTH:** Free open-air theatre p6 • Waterloo Carnival p3 • Tapas Fantásticas p4  
Free open-air cinema p6 • Live Music Sculpture at Tower Bridge p5 • Repair Cafe p4

**July 2012**

**in SE1**

**Issue 169**

**FREE**



**STEEL & SHAMASH**  
THE WATERLOO COMMUNITY SOLICITORS

*We can help with all your legal problems*

- Family
- Children
- Housing
- Criminal

For a friendly professional service  
Only two minutes from Waterloo Station

Contact Steel & Shamash  
12 Baylis Road • Waterloo • London • SE1 7AA  
Tel: 020 7803 3999  
Email: mail@steelandshamash.co.uk

## BOST's Pop-up Mini Olympics

Throughout July the Marlborough Playground in Union Street will host a wide range of sports activities for local schoolchildren, families and residents.

Bankside Open Spaces Trust has organised the Pop-Up Mini Olympics which will feature football, hockey, netball, basketball, badminton, Zumba, tai chi, running, table tennis and cycling.

"Transforming Marlborough Playground has been a long-term mission for us and this month it will become a reality," says Tim Wood, chair of BOST.

"Not only will it become a much cleaner, greener space in an urban environment, but it will also give SE1 access to a wide range of sports that previously may have been inaccessible."

- Join the opening ceremony from 3.30pm on Thursday 5 July
- [www.bost.org.uk](http://www.bost.org.uk)
- To volunteer your time or book a sports session contact 07939 593062 or [fiona@bost.org.uk](mailto:fiona@bost.org.uk).

## War and Peace

**Waterloo Festival 2012**  
**12-17 July**

The Waterloo Festival at St John's returns for its second year celebrating the neighbourhood and its rich diversity past and present – this time with the theme of 'War and Peace'.

From Thursday 12 to Tuesday 17 July St John's Waterloo is the hub for a series of events ranging from classical music concerts (see page 5) to guided walks (see page 5), a community fete (turn to page 4), art workshops (page 4) and a tea dance (page 4).

The Waterloo Festival is intended to cater for all ages, encompassing the local community as well as a wider audience.

The festival also draws together the work of the artistic organisations based at St John's, including Futures Theatre Company, Southbank Mosaics and Southbank Sinfonia.

Local schools will take part in music, art and theatrical workshops during the festival. Visitors to the events will be encouraged to contribute to a symbol of peace in the form of a dove as part of an organic artwork coordinated by artist-in-residence Clare Abbatt.

At the festival funds are being raised for The Poppy Factory which helps wounded, injured and sick ex-servicemen and women find meaningful employment in the communities where they live around the UK. The second beneficiary charity is the Amos Trust which promotes justice and hope for forgotten communities.

- Find the full festival programme at [www.stjohnswaterloo.org/waterloofestival](http://www.stjohnswaterloo.org/waterloofestival)
- Follow @waterloofestiv on Twitter
- Through our sister website [www.London-SE1.co.uk](http://www.London-SE1.co.uk) we are delighted to be festival's official media partner.

## The Président Bastille Festival

London's largest Bastille Day festival will be held in Bankside and Borough Market on Saturday 14 July.

The programme includes a waiters' race, pétanque, table football, a hat making workshop, story telling, face painting, a bike surgery and gastronomic film screenings.

Borough Market will showcase its French traders and host a French-themed demonstration kitchen. Street entertainment including promenading performance artists and musicians will bring the streets to life.

The festival will end with an open-air party around Borough Market (6pm-midnight).

"The Président Bastille Festival promises to be an unforgettable celebration during an extraordinary summer for the capital, bringing together families and food lovers alongside London's French-speaking communities and Francophiles for a great day out," says Peter Williams, chief executive of Better Bankside.

- [www.bastillefestival.co.uk](http://www.bastillefestival.co.uk)

**FRANK HARRIS**  
and Company

**South Bank Specialists**

**RESIDENTIAL SALES,  
LETTINGS  
and MANAGEMENT**

**123 Stamford Street SE1 9NN**

**020 7620 3400**

**[www.frankharris.co.uk](http://www.frankharris.co.uk)**



## in SE1

27 Blackfriars Road  
London SE1 8NYTel 020 7633 0766  
Web www.inSE1.co.uk© 2012 Bankside Press  
ISSN 1750-1334 (Print)  
ISSN 1750-1342 (Online)Editor  
**Leigh Hatts**  
leigh.hatts@banksidepress.com  
Production Editor  
**James Hatts**  
james.hatts@banksidepress.com  
Contributing writer  
**Marion Marples**

Printed by Copyprints Ltd

## ADVERTISING

For details of our competitive rates call us for a rate card on 020 7633 0766 or email [sales@inSE1.co.uk](mailto:sales@inSE1.co.uk). You can also download our rate card from [www.inSE1.co.uk](http://www.inSE1.co.uk)

## SUBSCRIPTIONS

To receive the next 12 issues by post in the UK please send a cheque for £10 to the address above, made payable to 'in SE1'. Please specify starting issue.

## LISTINGS INFORMATION

Listings for most types of local event are free; details of events to be considered for inclusion next month should be sent by **Friday 20 July** to [se1events@banksidepress.com](mailto:se1events@banksidepress.com) or by post.

## DISCLAIMER

Every effort is made to ensure the accuracy of our listings but all details are subject to alteration by venues and organisers and no responsibility can be accepted for any inaccuracies.

londonSE1  
community websiteWe also publish a community website, updated daily with local news and features and a lively discussion forum. Visit it at [www.London-SE1.co.uk](http://www.London-SE1.co.uk)

## [ SE1 Direct ]

To ensure that you don't miss out on anything that's happening in the area, make sure you receive our weekly email newsletter every Monday. Sign up today by visiting [www.SE1direct.co.uk](http://www.SE1direct.co.uk). With more than 7,200 subscribers, can you afford to miss out?

## This month in brief

## Independents Day

Shopkeepers in Waterloo will be taking part in an initiative to encourage workers and residents to support their local independent shops on Wednesday 4 July. Look out for an appearance by the Dulux dog in Lower Marsh and events and discounts in local shops. A new website – [WeAreWaterloo.co.uk](http://WeAreWaterloo.co.uk) – will also be launched.

## Great Fire of Southwark

Fireworks will be let off from the tower of Southwark Cathedral at 7.30pm on Tuesday 10 July as part of the commemorations to mark the 800th anniversary of the Great Fire of Southwark in 1212. See listing on page 4.

## The Tanks at Tate Modern

The former oil tanks of Bankside Power Station open to the public on 18 July as the world's first museum galleries permanently dedicated to exhibiting live art, performance, installation and film works. There is a mixture of open-access installations (see page 8) and ticketed events.

## Olympic Torch Relay

The Olympic torch relay will arrive in SE1 via the Millennium Bridge on Thursday 26 July. The relay will cross the Millennium Bridge from St Paul's Cathedral at about 10am. The flame will visit Shakespeare's Globe before the relay continues down Southwark Bridge Road, Marshalsea Road, Great Dover Street and Old Kent Road en route to Peckham.

## Shard tickets on sale

Tickets for the viewing galleries at the top of the Shard go on sale on Thursday 6 July at 9am from 0844 499 7111 and [www.theviewfromtheshard.com](http://www.theviewfromtheshard.com). The attraction opens on 1 February 2013. Pricing had not been announced at the time of going to press.

## British Museum

Objects excavated at the Globe and Rose theatres, such as a sucket fork for sweetmeats and the skull of a bear, will go on show this month at the British Museum's *Shakespeare: staging the world* exhibition which opens on Thursday 19 July. [www.britishmuseum.org](http://www.britishmuseum.org)

## Reverdy Road

This Bermondsey road will be the subject of *The Secret History of Our Streets* to be broadcast on BBC Two at 9pm on Wednesday 4 July.

## E&amp;C Community Fund

Elephant & Castle developer Lend Lease has launched a community fund to support training, arts and environmental initiatives. Groups should apply by Friday 20 July. [www.London-SE1.co.uk/n6076](http://www.London-SE1.co.uk/n6076)

## Beauty and the Beast

SE1-based theatre group the Quay Players bring the magic of Disney's *Beauty and the Beast* to the stage of Dulwich's Edward Allyn Theatre this month. [www.quayplayers.org.uk](http://www.quayplayers.org.uk)

## Line dancing

Line dancing teacher wanted from September at Setchell Estate Tenants' Hall - please phone Fran 020 7252 0242.

## Morley mosaics

A collection of mosaics is to be unveiled this month on the exterior wall of Morley College featuring influential female figures from local history. The works by Southbank Mosaics feature portraits of 13 remarkable women including Emma Cons, Mary Seacole and Jude Kelly OBE.

## Florence Nightingale

The Florence Nightingale Museum is open till 7pm every Thursday in July and August.

## Winchester Palace ruins

On Saturday 14 July (1pm-5pm), as part of the Festival of Archaeology, there is an open day at Winchester Palace in Clink Street to encourage visitors to view the standing remains and understand the extensive archaeology of the medieval palace. Copies of a new guide to the site will be available on the day.

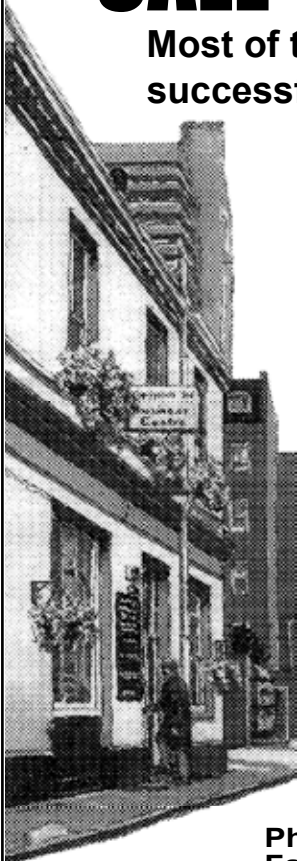
## Cenestra Choir

On Sunday 15 July the Welsh Chapel in Southwark Bridge Road will welcome the 45-strong Cenestra Male Choir from the townships around Johannesburg to sing at its 11am service. [www.welshchapel.com](http://www.welshchapel.com)

## CALL in the YARD

Most of the big and successful local firms

do when they have something to say and they would like us to give a sharp edge to it.

PRINT  
COPIES  
REPORTS  
BROCHURESCommunication  
of all kindsCopyprints Ltd  
BUSINESS CENTRE  
1 Talbot Yard  
SE1 1YP[www.copyprintsltd.co.uk](http://www.copyprintsltd.co.uk)Phone 020 7407 2079  
Fax 020 7403 5411

Enjoy the elegant yet vibrant atmosphere; a contemporary décor, with an Indian soul.

For further information or to book a table call  
t: 0207 407 0333

5-6 Cromwell Building, Redcross Way  
London, SE1 9HR

www.justmangotree.com  
eat@justmangotree.com

Open all day – 16 July to 16 September



Free home delivery available

## What's On

July

Comprehensive local listings

## Special events

### Bankside Mix

Canvey Street  
www.banksidemix.co.uk

Until Sunday 8 July  
**WIMBLEDON BIG SCREEN**  
12 noon-9.30pm

Follow all the SW19 action from SE1.  
→ Full info at [se1.net/12652](http://se1.net/12652)

### Bankside riverside walkway

Bankside

Saturday 14 July to Sunday 9 September  
**PEREGRINES AT TATE MODERN**  
12 noon-7pm; free

A chance to see the peregrine falcons high above the Tate Modern chimney. The RSPB team will be on hand near the Millennium Bridge to help you with telescopes to give you the best views, and to give you information about these amazing birds which can reach speeds of 200 mph while chasing their lunch through the air.

→ Full info at [se1.net/12682](http://se1.net/12682)

### Bermondsey Village Hall

Kirby Grove T 020 7378 1078

Saturday 14 July  
**SPRINGS OF HOPE CELEBRATION AND FUNDRAISING EVENT**  
3pm-9pm; entry £5 per family

Springs of Hope is celebrating its third anniversary. Funds raised will help to support its work in the UK, Jamaica and Ghana. Caribbean food & drink for sale, arts and crafts activities, live performances, jumble sale, stalls and more.

→ Full info at [se1.net/12819](http://se1.net/12819)

### Bernie Spain Gardens

Upper Ground  
www.coinstreet.org

Monday 16 July  
**SOAPBOX SCIENCE**  
12 noon-3pm; free

Some of the UK's best brains bring science to the South Bank. Zoological Society of London and L'Oreal-UNESCO For Women in Science programme have joined forces with the help of some of the UK's most prominent female scientists to bring science to the people. Four or five scientists will be speaking at a time, covering a wide variety of subjects.

→ Full info at [se1.net/12808](http://se1.net/12808)

### Borough Market & environs

www.boroughmarket.org.uk

Saturday 14 July  
**PRESIDENT BASTILLE FESTIVAL**  
11am-12 midnight; free

For the fifth year London's largest free Bastille Day festival will celebrate France's national day with an extravaganza of all things French around Bankside and Borough Market.

→ Full info at [se1.net/12284](http://se1.net/12284)

### Brigade

139 Tooley Street T 0844 346 1225  
www.thebrigade.co.uk

Friday 20 July  
**FUSE1 BREAKFAST**  
8am-10am; £10

Networking breakfast for SE1-based businesses in the property sector.

→ Full info at [se1.net/12654](http://se1.net/12654)

### Downings Roads Moorings

Mill Street

Sunday 15 July  
**NATIONAL GARDENS SCHEME OPEN DAY**

2pm-5pm; £3.50 (children free); share to RNLI

Series of seven floating barge gardens connected by walkways and bridges. Home-made teas available.

→ Full info at [se1.net/12227](http://se1.net/12227)

### Festival Riverside

Belvedere Road  
www.southbankcentre.co.uk

Saturday 28 July  
**BILLY BRAGG'S RETURN OF THE BIG BUSK**

4pm; free  
Billy Bragg returns to Southbank Centre with his hugely popular Big Busk. Musicians of all ages and abilities are invited to come to the South Bank with their instruments and join Billy Bragg in an afternoon of mass music making, featuring Bragg's favourite songs. Chord charts and lyrics available for download from Southbank Centre's website.

→ Full info at [se1.net/12707](http://se1.net/12707)

### Glaziers Hall

9 Montague Close T 020 7403 3300  
www.glaziershall.co.uk

Friday 20 July to Sunday 12 August  
**HOUSE OF SWITZERLAND**  
The official Swiss guest house at the Olympic Games.

→ Full info at [se1.net/11722](http://se1.net/11722)

### Hay's Galleria

Tooley Street  
www.haysgalleria.co.uk

Saturday 28 July  
**RIVERSIDE SUMMER FAIR**  
12 noon-5pm

Festival featuring local artists selling a varied selection of art and craft, as well as food traders, live musicians and performances throughout the day.

→ Full info at [se1.net/12780](http://se1.net/12780)

### Imperial War Museum

Lambeth Road T 020 7416 5000  
london.iwm.org.uk

Sunday 8 July  
**A DAY AT IWM LONDON**

10.30am-4.30pm; booking essential; free  
Join the Open University in London for a day of fascinating lectures and inspiring creative writing sessions.

→ Full info at [se1.net/12683](http://se1.net/12683)

### James Clerk Maxwell Building

57 Waterloo Road  
www.kcl.ac.uk

Tuesday 3 July  
**DR BIKE**  
5.30pm-7.30pm; free

Bring your bike along to Lambeth Council's free event opposite BFI IMAX and get a free safety check from an expert mechanic and lots of friendly advice on cycling and cycle training.

→ Full info at [se1.net/12480](http://se1.net/12480)

### Jubilee Gardens

Belvedere Road

Saturday 7 July  
**INTERNATIONAL BRIGADES COMMEMORATION**  
12.30pm-2pm; free

Annual International Brigade Memorial Trust commemoration for the Spanish Civil War republican volunteers from Britain and Ireland.

→ Full info at [se1.net/12466](http://se1.net/12466)

### Lower Marsh

Lower Marsh  
www.lower-marsh.co.uk

Friday 13 July  
**WATERLOO CARNIVAL**  
12 noon till late; free

This year's theme is 'superheroes'. Mask-making workshops on Lower Marsh from 12 noon before the procession leaves Tanswell Street at 1.30pm for a 2pm finale at Waterloo Millennium Green. There will be more activities and music on the green through the afternoon, whilst the party continues outside Cubana till 8pm.

→ Full info at [se1.net/12150](http://se1.net/12150)

### Marlborough Playground

Union Street

Thursday 5 to Friday 27 July  
**POP-UP MINI OLYMPICS**  
9.30am-9.30pm

Through July taster activities and workshops will be on offer. Opening ceremony 3.30pm on Thursday 5 July.

→ Full info at [se1.net/12733](http://se1.net/12733)

# CONNECTING LONDON

Whatever IT takes

## 0207 407 1335

support@connectinglondon.com

129 Great Suffolk Street, London, SE1 1PP

www.connectinglondon.com



## Your Local IT Company

We can help you with all of your IT needs:

- Maintenance and support contracts.
- PC support, repair, recovery and disinfection services.
- Competitive Home and Business Broadband Solutions.
- Web hosting and web design.
- Full server and virtualization solutions.
- "CLOUD" services including email hosting.
- Mobile Communications and BlackBerry services.
- Engineer labour rates start at £50+VAT per hour for the SE1.

**Morley College**61 Westminster Bridge Road T 020 7928 8501  
www.morleycollege.ac.ukTuesday 3 July  
**OPEN ENROLLMENT DAY**  
4pm-8pm

Come along to the college's open day and find out more about what Morley can offer you. You will have the opportunity to meet tutors and ask questions about courses, tour the college and view the facilities, visit departments and enrol on the day for courses that take your interest.

→ Full info at [se1.net/12823](http://se1.net/12823)**Potters Fields Park**Tooley Street  
www.pottersfields.co.ukSaturday 14 to Sunday 15 July  
**RIOJA TAPAS FANTASTICAS**Sat 12 noon-8pm; Sun 12 noon-6pm;  
free

A spectacular variety of red, white and rosé wines from some of Rioja's most famous vineyards will be available for you to taste as you make your way around the vibrant wine and tapas stalls. Savour a diverse selection of tapas from London's finest Spanish restaurants who will recreate the famous tapas streets of the Rioja region where you can go from bar to bar sampling a speciality dish and glass of delicious local wine in each.

→ Full info at [se1.net/12278](http://se1.net/12278)**Royal British Legion**199 Borough High Street  
www.britishtonlegion.org.ukSunday 8 July  
**POPPY WALK 2012**

Get up, get out and get walking before the rest of the world arrives for the Olympics. This popular family day out will show you, in 10 km, just some of what our great capital city has to offer - plenty of history and fun. Bring the dog, family, friends and colleagues to help find answers to the quiz along the way. Starts and finishes in Borough High Street with proceeds to the Royal British Legion. For an entry form, contact Rebecca Pride on 020 3207 2272 or email [rpriide@britishlegion.org.uk](mailto:rpriide@britishlegion.org.uk)

→ Full info at [se1.net/12792](http://se1.net/12792)**Southwark Cathedral**London Bridge T 020 7367 6700  
www.southwarkcathedral.org.ukSaturday 28 July  
**PEAL OF BELLS**  
10am

A simultaneous peal with St Paul's Cathedral and Westminster Abbey to mark the start of the Olympic Games. Each tower will ring a peal of at least 5000 changes.

→ Full info at [se1.net/12802](http://se1.net/12802)**St John's Waterloo**73 Waterloo Road T 020 7633 9819  
www.stjohnswaterloo.orgFriday 13 July  
**TEA DANCE**2pm-4pm; free; RSVP [philippaowen@googlemail.com](mailto:philippaowen@googlemail.com) 020 7582 0755 or 07932 744539

Tea dance led by Ragroof Theatre Company with songs by Blackfriars Nightingales. Tea and cakes available. All welcome.

Part of [Waterloo Festival](http://Waterloo Festival)  
→ Full info at [se1.net/12830](http://se1.net/12830)Saturday 14 July  
**DROP-IN ART WORKSHOPS**

2pm-4pm; free (contribution to cost of materials welcome)

Open to adults, young people and children, participants can join different workshops throughout the afternoon. In the church, workshops will be run by

Clare Abbatt, artist-in-residence. In the crypt, join a mosaic making workshop with Southbank Mosaics.

Part of [Waterloo Festival](http://Waterloo Festival)  
→ Full info at [se1.net/12833](http://se1.net/12833)Sunday 15 July  
**COMMUNITY FETE**

Churchyard; 2pm-5pm; free  
Face painting, splat the rat, music from around the world, cakes, tombola, bric-a-brac, exhibition of local history, plants, tug-of-war, egg and spoon and more activities for all ages.

Part of [Waterloo Festival](http://Waterloo Festival)  
→ Full info at [se1.net/12832](http://se1.net/12832)**Tabard Gardens**

Tabard Street

Saturday 14 July  
**PEACE DAY**

10am-6pm; free  
Annual event held in memory of David Ildow and other victims of violent crime. Football tournament (10am-1pm) followed by speeches, music, poets, dancers etc (12.30pm-6pm) on the stage. Plus hot food, games, bouncy castle and face painting.

→ Full info at [se1.net/12778](http://se1.net/12778)**The Goodlife Centre**122 Webber Street  
www.thegoodlifecentre.co.ukSunday 22 July  
**REPAIR CAFE**

2pm-5pm; free  
A project first launched in Holland to encourage communities to repair, reuse and recycle their possessions and reduce the volume of what is thrown away. Visitors are encouraged to bring their broken items from home for assessment, and if deemed repairable by the organisers, they can start making their repairs in the Repair Cafe. DIY and electrical experts from The Goodlife Centre will be on standby to advise and a selection of tools and materials will be made available for use on the day.

→ Full info at [se1.net/12816](http://se1.net/12816)**The Shard**London Bridge Street  
www.londonbridgequarter.comThursday 5 July  
**SHARD INAUGURATION LIGHT AND LASER SHOW**

10.15pm; free  
Central London will be lit up by a spectacular light and laser show to mark the formal inauguration of Europe's tallest building, The Shard. A combination of 12 lasers and 30 searchlights will light up the night sky over the capital at approximately 10.15pm to mark the building's external completion. Earlier in the day the Duke of York and the prime minister of Qatar will visit the building for the formal ceremony.

→ Full info at [se1.net/12817](http://se1.net/12817)**Westminster Bridge**Saturday 14 July  
**SPARE THE BEARS**

PETA is calling on animal rights supporters to join a 5km walk carrying their teddybears round central London - starting on the South Bank near Westminster Bridge - to protest against the Ministry of Defence's use of Canadian black bear skins for guardsmen's headgear.

→ Full info at [se1.net/12822](http://se1.net/12822)**Children & family****HMS Belfast**Tooley Street T 020 7940 6300  
hmsbelfast.iwm.org.uk  
£14; senior citizen and student conc  
£11.20; under-16s freeSaturday 7 to Sunday 8 July  
**POINTS ON A COMPASS**

11am-12.30pm & 2pm-4pm  
Find out more about the countries, cultures and journeys HMS Belfast has made whilst in service. This free informal event is suitable for all ages but only with parental supervision. Entry included in general admission price.

→ Full info at [se1.net/12678](http://se1.net/12678)**Imperial War Museum**Lambeth Road T 020 7416 5000  
london.iwm.org.ukSaturday 21 to Sunday 22 July  
**BUILD THE TRUCE FAMILY ACTIVITY**

11am-1pm & 2pm-4pm; free  
Take part in a series of discussion, art and writing activities looking at why wars happen and how they are brought to an end. Linked to the new Build the Truce exhibition. Free drop-in activities for all ages with parental supervision.

→ Full info at [se1.net/12535](http://se1.net/12535)**Public meetings****Coin Street Neighbourhood Centre**108 Stamford Street T 020 7021 1600  
www.coinstreet.orgThursday 5 July  
**SOUTH BANK FORUM**

7pm-9pm  
Meeting for South Bank residents convened by Simon Hughes MP and Kate Hoey MP. Agenda includes an update on how the Olympics will affect the South Bank; Brian Dickens will provide an update on the Black Prince Trust Community Hub and Braeburn Estates, developers of the Shell Centre, will present the latest proposals. There will also be a screening of a short film by Jack Thurston about the many activities at the Waterloo Action Centre. Plus your opportunity to raise local issues from the floor.

→ Full info at [se1.net/12569](http://se1.net/12569)**Southwark Council**

www.southwark.gov.uk

Monday 2 July  
**BOROUGH, BANKSIDE & WALWORTH COMMUNITY COUNCIL**

7pm at Amigo Hall, St George's Cathedral, Lambeth Road  
First meeting of the newly merged community council for Cathedrals, Chaucer, East Walworth, Faraday and Newington wards. The meeting is an Elephant & Castle regeneration special, including updates on the Heygate Estate redevelopment, plans for the leisure centre site and news of the new Elephant & Castle community fund. A chance to put your questions directly to Cllr Peter John, leader of the council.

→ Full info at [se1.net/12638](http://se1.net/12638)Thursday 12 July  
**BERMONDSEY & ROTHERHITHE COMMUNITY COUNCIL**

7pm at Southwark College Bermondsey campus, Keetons Road SE16  
First meeting of the newly merged community council for Grange, Riverside, South Bermondsey, Surrey Docks, Rotherhithe and Livesey wards.

→ Full info at [se1.net/12639](http://se1.net/12639)**Waterloo Action Centre**14 Baylis Road T 020 7261 1404  
www.waterlooaactioncentre.co.ukWednesday 18 July  
**WATERLOO COMMUNITY DEVELOPMENT GROUP**

7pm  
Regular public meeting of the group that monitors planning and development issues in Waterloo. Hear from the developers and help to shape the community's response.

→ Full info at [se1.net/12219](http://se1.net/12219)**Talks & literature****St John's Waterloo**73 Waterloo Road T 020 7633 9819  
www.stjohnswaterloo.orgMonday 16 July  
**IS PEACE POSSIBLE IN A WORLD OF DIMINISHING RESOURCES?**

6pm; £5  
Discussion chaired by Loretta Minghella, chief executive of Christian Aid. Panelists are Tom Coghlan, defence correspondent of The Times, Revd Rana Khan, the Archbishop of Canterbury's interreligious dialogues assistant and Oliver Ramsbotham, former professor of peace studies at Bradford University. The biggest challenge for peace in the 21st century is competition for resources: land, water, fossil fuels. The panel will discuss whether a peaceful world is possible, and if so, how?

Part of [Waterloo Festival](http://Waterloo Festival)  
→ Full info at [se1.net/12828](http://se1.net/12828)**Waterloo Library**114-118 Lower Marsh T 020 7926 8750  
www.lambeth.gov.ukTuesday 10 July  
**HERITAGE LIBRARY SESSION**

10.30am; free  
Library session with a focus on local writers. Come and take part in discussions about famous writers from the area.

Part of [Living Memory heritage project](http://Living Memory heritage project)→ Full info at [se1.net/12510](http://se1.net/12510)**Church services****Southwark Cathedral**London Bridge T 020 7367 6700  
www.southwarkcathedral.org.ukTuesday 10 July  
**CHORAL EVENSONG TO MARK THE 800TH ANNIVERSARY OF THE GREAT FIRE OF SOUTHWARK**

5.30pm  
Representatives of the borough of Southwark and the London Fire Brigade gather to commemorate the great fire which destroyed the priory in 1212 and to dedicate new standards for the London Fire Brigade. This service will be followed at 7.30pm by fireworks from the tower of the Cathedral.

→ Full info at [se1.net/12607](http://se1.net/12607)Sunday 29 July  
**CHORAL EVENSONG**

3pm  
The Norwegian, Swedish and Finnish Churches gather with the Cathedral congregation to celebrate the Olympics.

→ Full info at [se1.net/12554](http://se1.net/12554)**St John's Waterloo**73 Waterloo Road T 020 7633 9819  
www.stjohnswaterloo.orgSunday 15 July  
**FESTIVAL EUCHARIST AND INTERFAITH WORSHIP**

10.30am  
Preacher: Revd Rana Khan, Archbishop of Canterbury's interfaith adviser. The service will include readings on war and peace, and prayers from faith traditions around the world. All welcome.

Part of [Waterloo Festival](http://Waterloo Festival)  
→ Full info at [se1.net/12827](http://se1.net/12827)**Guided walks****Bernie Spain Gardens**Upper Ground  
www.coinstreet.orgWednesday 18 July  
**REVEALING THE RIVER NECKINGER**

6.15pm; £12; booking essential (£2 discount if you wear blue)  
The Neckinger is one of London's lost rivers, buried beneath the streets, its course links key areas within the neighbourhood of Southwark's Bankside. On this walk you will uncover layers of social history and cultural curiosity, and find out about the controversies that still linger along its route. Join Tom Bolton, author of *London's Lost Rivers: A Walker's Guide*. Part of a series of accompanied participatory investigations

Follow us  
on Twitter  
@se1

**ELECTRICIAN**  
No job too small!  
07850 767283  
020 8761 6012  
[angelo@glennies.net](mailto:angelo@glennies.net)

into London neighbourhoods - you put the art in by participating - produced by Andrew Stuck from the Museum of Walking.

→ Full info at [se1.net/12757](http://se1.net/12757)

### Southwark Cathedral

London Bridge T 020 7367 6700  
[www.southwarkcathedral.org.uk](http://www.southwarkcathedral.org.uk)

Sunday 15 July

### INTER FAITH WALK

9.15am-4pm (meet at Southwark Cathedral education centre); free  
Guided walk visiting Bevis Marks Synagogue, East London Mosque and the Tibetan Buddhist centre in Manor Place, Walworth. South London Inter Faith Group has encouraged and supported coordinated inter faith walks this year immediately before the Olympics and Paralympics. The aim is to use this time, when the global spotlight is on London, to celebrate the multi faith character of London and to demonstrate, by walking and talking together, the inter faith collaboration that is taking place. Participants should dress modestly. Heads should be covered and shoes removed where required. Bring a vegetarian picnic.

→ Full info at [se1.net/12783](http://se1.net/12783)

### Living memory heritage project

Tuesday 10 July

### OUTER SPACES WALK

6pm; free; booking essential 020 7021 1600 or email [l.reynolds@coinstreet.org](mailto:l.reynolds@coinstreet.org)  
Guided walk exploring the spaces between buildings and how they are used.

→ Full info at [se1.net/12511](http://se1.net/12511)

### St John's Waterloo

73 Waterloo Road T 020 7633 9819  
[www.stjohnswaterloo.org](http://www.stjohnswaterloo.org)

Friday 13 July

### WATERLOO WALK: STAMFORD STREET AND THE CUT

11am; £5 (conc £3)  
Starting from and finishing at St John's Waterloo, taking in the development of the printing industry around Stamford Street, the Roupells of Lambeth, social housing around The Cut, the effects of the Blitz, The Old Vic and the prostitute scandals along Cornwall Road.

Part of [Waterloo Festival](#)  
→ Full info at [se1.net/12834](http://se1.net/12834)

Saturday 14 July

### WATERLOO WALK: STAMFORD STREET AND THE CUT

11am; £5 (conc £3)  
Starting from and finishing at St John's Waterloo, taking in the development of the printing industry around Stamford Street, the Roupells of Lambeth, social housing around The Cut, the effects of the Blitz, The Old Vic and the prostitute scandals along Cornwall Road.

Part of [Waterloo Festival](#)  
→ Full info at [se1.net/12836](http://se1.net/12836)

Monday 16 July

### WATERLOO WALK: ALL CHANGE AT WATERLOO

11am; £5 (conc £3)  
Starting from and finishing at St John's Waterloo, covering Waterloo Bridge, music halls, The Festival of Britain, Waterloo Station and the regeneration around Jubilee Gardens, the Shell Centre and Elizabeth House.

Part of [Waterloo Festival](#)  
→ Full info at [se1.net/12835](http://se1.net/12835)

## Comedy

### The Horse

122-124 Westminster Br Rd T 020 7928 6277  
[www.horsebar.co.uk](http://www.horsebar.co.uk)

Wednesday 4 July

### WATERLOO COMEDY CLUB

8pm; £19 (conc £15)  
Father Ted star Ardal O'Hanlon will be flying in from Dublin to perform a special show at Waterloo Comedy Club supported by Mitch Benn who will be performing an exclusive Edinburgh preview. Also on the bill: Alison Thea-Skot and McNeil and Pamphilon.

→ Full info at [se1.net/12684](http://se1.net/12684)

## Dance

### Elephant & Castle Shopping Centre

Elephant and Castle

Monday 9 to Saturday 14 July

### THE PUBLIC HOUSE

Unit 237; Drop in Tue-Sat  
10.30am-6.30pm; free; plus evening ticketed events

The Public House is a week-long event of installations, performances and choreographic experiments inside an empty shop unit in the Elephant & Castle Shopping Centre. With the help of design trio Wignall & Moore and visual artist Anna Sikorska, Hiru Dance Organisation is transforming a large shop front into a furnished living room which will act both as a performance space and a welcoming environment to sit down with a cup of tea. The Public House will host five day-long artist residencies and one evening programme, performed on six consecutive nights. Free tea and biscuits will be served all day and there will be drinks in the evenings.

Part of [Big Dance](#)  
→ Full info at [se1.net/12795](http://se1.net/12795)

Sunday 15 July

### BIG DANCE BUS

12 noon-4pm; free  
The Big Dance Bus - an old London Routemaster - is coming to the Elephant to showcase the thriving dance communities in Southwark and to participate in the celebration of Jamaica's 50th anniversary of independence. Watch professional performances and take part in free workshops. Part of [Big Dance](#)

→ Full info at [se1.net/12782](http://se1.net/12782)

### Millennium Bridge

Bankside

Thursday 12 to Saturday 14 July

### FOUR CORNERS

Thu & Fri 1pm & 6.30pm; Sat 6.30pm; free  
60 conservatoire dancers present new choreography by Nina Rajarani, Bawren Tavaziva, Ponciano Almeida and Lea Anderson.

Part of [City of London Festival](#)  
→ Full info at [se1.net/12540](http://se1.net/12540)

### Siobhan Davies Studios

85 St George's Road  
[www.siobhandavies.com](http://www.siobhandavies.com)

Sunday 15 July

### FOOTFALL

11.30am-5pm; free  
Traipse, meander, tip-toe or strut to Siobhan Davies Studios for a wide-ranging event exploring and celebrating the act of walking. Footfall presents newly commissioned performance and film works, an audio walk created with scientists, an interactive installation, and a lively artist's talk. The event includes the new dance piece choreographed by Matthias Sperling, Walking Piece, a film by dance film artists Straybird, and an installation by emerging artists Sin Goldby and Sandy Dobson which combines dance, sound design and visual arts. These will be followed by a talk by the artists involved, including Siobhan Davies and David Hinton who will discuss their new film. Part of [Big Dance](#)

→ Full info at [se1.net/12650](http://se1.net/12650)

### The Scoop

More London Riverside  
[www.morelondon.com/scoop.html](http://www.morelondon.com/scoop.html)

### Saturday 7 to Sunday 8 July BIG YOUTH DANCE WEEKEND

11am-4pm; free  
Sadler's Wells hosts two days of youth dance performances. Part of [Big Dance](#)

→ Full info at [se1.net/12603](http://se1.net/12603)

## Music

### Southwark Cathedral

London Bridge T 020 7367 6700  
[www.southwarkcathedral.org.uk](http://www.southwarkcathedral.org.uk)

Monday 2 July

### ORGAN RECITAL

1.05pm; free  
Recital by Greg Morris to celebrate the 300th anniversary of John Stanley, London composer and organist. Part of [City of London Festival](#)

→ Full info at [se1.net/12538](http://se1.net/12538)

Friday 6 July

### LONDON GAY MEN'S CHORUS CELEBRATES WORLD PRIDE

7.30pm; free (suggested donation £10)  
Concert suitable for all the family. Musical highlights include A Nightingale Sang In Berkeley Square, Over The Rainbow, Sondheim's Our Time and Sunday, Wagner's Pilgrim's Chorus and Leonard Bernstein's sensational Make Our Garden Grow with soloists Hannah Pedley and Amanda Forbes. LGMC's charity partner for the concert is Kaleidoscope who work around the world to promote diversity and respect for all regardless of sex, sexual orientation or gender identity.

→ Full info at [se1.net/12794](http://se1.net/12794)

Monday 9 July

### ORGAN RECITAL

1.05pm; free  
Organ recital by Peter Wright reflecting the City and the Hanseatic League. Part of [City of London Festival](#)

→ Full info at [se1.net/12539](http://se1.net/12539)

Wednesday 11 July

### I WILL SING WITH THE SPIRIT

3.30pm; free  
The award-winning youth choir of St Remigius Dsseldorf performs sacred songs in English, German and Latin.

→ Full info at [se1.net/12824](http://se1.net/12824)

### St George the Martyr

Borough High Street T 020 7357 7331  
[www.stgeorge-themartyr.co.uk](http://www.stgeorge-themartyr.co.uk)

Saturday 7 July

### BOROUGH CHAMBER CHOIR: THE POWER OF MUSIC

7.30pm; £12 (conc £10)  
Borough Chamber Choir with instrumental ensemble. Programme includes works by Handel, Weelkes, Elgar, Parry and Mozart.

→ Full info at [se1.net/12791](http://se1.net/12791)

### St John's Waterloo

73 Waterloo Road T 020 7633 9819  
[www.stjohnswaterloo.org](http://www.stjohnswaterloo.org)

Thursday 5 July

### RUSH HOUR CONCERT

6pm; free  
Free after-work concert with Southbank Sinfonia. Enjoy a complimentary glass of wine while you listen. Mozart Symphony No.36 in C major De Falla El Amor Brujo Ballet Suite

→ Full info at [se1.net/12302](http://se1.net/12302)

Thursday 12 July

### SOUTHBANK SINFONIA

7.30pm; £12 (conc £8)  
Amid the atrocities of war, art often flourishes. Few artists have shown greater defiance and strength in wartime than opera composer Richard Strauss. The opening concert of the Waterloo Festival features his music and some of the great operas he so loved, performed by Bury Court Opera and the young professionals of the Southbank Sinfonia, who bring their own remarkable zeal to the music. The Gestapo threatened to harm Strauss's Jewish grandchildren if he did not comply with Hitler's wishes. He bravely continued to write the music he wanted, writing works of radiant optimism at the darkest hour, including the sextet from his opera 'Capriccio' and his very last piece, the 'Duett-Concertino'.

Part of [Waterloo Festival](#)  
→ Full info at [se1.net/12826](http://se1.net/12826)

Friday 13 July

### KREUTZER QUARTET

7.30pm; £12 (conc £8)  
The Kreutzer Quartet sets up a dialogue with Martin Ellerby's new work using music from the 19th, 20th and 21st centuries. All three works that they have chosen explore ideas of correspondence, of distance, of exile, and new life. Dvorak's quintet was inspired by his time in the small Czech community of Spillville, Iowa, a home very far from home. Elliott Schwartz, who has pioneered new music in Maine for many years, offers a quartet inspired by the collection-sculpture of Louise Nevelson, who was exiled from Kiev to Maine early in the 20th century. Leos Janacek's astounding Second Quartet 'love letters' succeeds in bringing together the hopes and tragedy of the Europe unfolding around him in its short span.

Part of [Waterloo Festival](#)  
→ Full info at [se1.net/12837](http://se1.net/12837)

Saturday 14 July

### LOVE IS STRONG AS DEATH: THE MERIDIAN SINGERS

7.30pm; £12 (conc £8)  
Choral music and reflections for peace and inter-faith in modern times with the Meridian Singers. Programme includes the world premiere of Orlando Gough's Waterloo Cantic 'Love is Strong as Death', specially commissioned for the Waterloo Festival, setting poetry from Beirut alongside words from the Song of Solomon sung in Hebrew and Arabic, and readings on peace and war from different traditions.

Part of [Waterloo Festival](#)  
→ Full info at [se1.net/12829](http://se1.net/12829)

Monday 16 July

### THE MARTIN TRIO

8pm; £5  
The Martin Trio (Southbank Sinfonia alumni) play works by Brahms, Debussy, Purcell and Mendelssohn.

Part of [Waterloo Festival](#)  
→ Full info at [se1.net/12838](http://se1.net/12838)

Tuesday 17 July

### SONGS OF LOVE AND LOSS

1pm; £5  
Festival favourite Viv Munday returns to sing songs about war and peace, including music from World War I and World War II by Weill, Tchaikowsky and Butterworth.

Part of [Waterloo Festival](#)  
→ Full info at [se1.net/12839](http://se1.net/12839)

Friday 27 July

### FLUTEMUSIC

1.10pm; free  
Join Colleen Muriel (flute), Eric Stevens (piano) and Keith Long (baritone soloist) for a lunchtime programme of light classics, serious classics, folk songs, hymns and some new music.

→ Full info at [se1.net/12122](http://se1.net/12122)

### Tower Bridge Exhibition

Tower Bridge T 020 7940 3985  
[www.towerbridge.org.uk](http://www.towerbridge.org.uk)

Sunday 8 July

### LIVE MUSIC SCULPTURE

7pm-9pm; free  
Innovative composer and musician Samuel Bordoli will be using the structure of Tower Bridge to play with the ways in which music is perceived. Watch musicians play along the length of the high-level walkways, 42 metres above the Thames.

Part of [City of London Festival](#)  
→ Full info at [se1.net/12541](http://se1.net/12541)

### Welsh Chapel

90 Southwark Bridge Road  
[welshchapel.com](http://welshchapel.com)

Saturday 21 July

### THREE CONTRASTING CHOIRS: IN CONCERT

7.30pm; £10 from 07763 768499 or [margaret.jones12@sky.com](mailto:margaret.jones12@sky.com)  
Concert by Cor Meibion Gwalia, Cor Merched Cymry Llundain and Eschior.

→ Full info at [se1.net/12818](http://se1.net/12818)

Sign up for  
our weekly  
email updates  
[se1direct.co.uk](http://se1direct.co.uk)



Wednesday 25 July to Friday 10 August  
**OUTSIDE THE WHITE CUBE**  
New annual exhibition in support of Crisis, the national charity for single homeless people, featuring the work of both emerging and established artists.  
→ Full info at [se1.net/12584](http://se1.net/12584)

**Bicha Gallery**

7 Gabriel's Wharf T 020 7928 0083  
www.bicha.co.uk  
Tue-Sun 11am-7pm; free

Friday 13 to Wednesday 25 July  
**BENEATH THE ARCHITECTURE OF BEAUTY**  
Photography and neon sculpture exploring society, decadence and the weather by Australian artist Dr Lisa Anderson.  
→ Full info at [se1.net/12524](http://se1.net/12524)

**Borough Road Gallery**

103 Borough Road T 020 7815 5737  
www.boroughroadgallery.co.uk  
Wed-Fri 1pm-5pm; Sat 12 noon-5pm; free

Until Saturday 13 October  
**A DAVID BOMBERG LEGACY: THE SARAH ROSE COLLECTION**  
First exhibition in new gallery set up to display the collection of works by David Bomberg and associated artists donated to LSBU by Sarah Rose.  
→ Full info at [se1.net/12771](http://se1.net/12771)

**City Hall**

The Queen's Walk T 020 7983 4100  
www.london.gov.uk  
Mon-Fri 8.30am-6pm (Fri 5.30pm); free

Until Sunday 15 July  
**DANCE IN FOCUS**  
Aspiring photographers worked with acclaimed dance photographer Chris Nash and professional dancers to produce imaginative and thought-provoking images capturing dance and movement  
→ Full info at [se1.net/12786](http://se1.net/12786)

**Cuming Museum**

151 Walworth Road T 020 7525 2332  
www.southwark.gov.uk/cumingmuseum  
Tue-Sat 10am-5pm; free

Until Saturday 27 October  
**FACT INTO FICTION: CHARLES DICKENS - A SOUTHWARK CHILDHOOD**  
Dickens's experiences of the Borough area during his time there in 1824.  
→ Full info at [se1.net/12214](http://se1.net/12214)

**Design Museum**

Shad Thames T 0870 909 9009  
www.designmuseum.org  
Daily 10am-5.45pm (last admission 5.15pm); £10 (conc £9; students 6); Under 12s free

Until Sunday 8 July  
**CHRISTIAN LOUBOUTIN**  
Christian Louboutin's exquisite shoes, with their trademark glossy red soles, are a unique fusion of craftsmanship, engineering and sculpture.  
→ Full info at [se1.net/11773](http://se1.net/11773)

Until Sunday 15 July  
**DESIGNS OF THE YEAR 2012**  
Showcasing the most innovative and

progressive designs from around the world.  
→ Full info at [se1.net/11772](http://se1.net/11772)

Wednesday 25 July to Sunday 18 November  
**DESIGNED TO WIN**  
The various ways in which design has helped athletes break records and push the boundaries of what was previously thought possible.  
→ Full info at [se1.net/11774](http://se1.net/11774)

**Fashion & Textile Museum**

83 Bermondsey Street T 020 7407 8664  
www.ftmlondon.org  
Exhibitions Tue-Sat 11am-6pm; £7 (conc £5); under-12s free

Friday 6 July to Saturday 27 October  
**POP! DESIGN, CULTURE, FASHION**  
New insight into 20 years of popular culture from one of the most comprehensive private collections of design and fashion.  
→ Full info at [se1.net/11754](http://se1.net/11754)

**Florence Nightingale Museum**

St Thomas' Hospital T 020 7620 0374  
www.florence-nightingale.co.uk  
Daily 10am-5pm; £5.80 (conc £4.80, family £16)

Thursday 19 July to Friday 31 August  
**BONE**  
An eclectic exhibition of around 60 objects exploring the rich history and substance of bone, across cultures, throughout time and between disciplines.  
→ Full info at [se1.net/12804](http://se1.net/12804)

**gallery@oxo**

Oxo Tower Wharf T 020 7021 1686  
www.coirstreet.org  
Daily 11am-6pm; free

Until Sunday 8 July  
**ART IN THE WILD**  
Roger Hooper is a photographer who is passionate about wildlife and the environment.  
→ Full info at [se1.net/12689](http://se1.net/12689)

Thursday 12 to Sunday 29 July  
**THE RAGING STORM: STORM THORGERSON**  
Fine art prints taken from original artwork of album covers for rock'n'roll bands such as Muse or Pink Floyd.  
→ Full info at [se1.net/12690](http://se1.net/12690)

Tuesday 31 July to Sunday 12 August  
**SCULPTURE AND SPORT: A CELEBRATION FOR 2012**  
A collection of 30 bronze sculptural studies by 30 artists of 30 different Olympic and Paralympic sports.  
→ Full info at [se1.net/12276](http://se1.net/12276)

**Garden Museum**

Lambeth Palace Road T 020 7401 8865  
www.gardenmuseum.org.uk  
Daily 10.30am-5pm (closed 1st Mon of month); £7 (conc £6; under-16s free)

Tuesday 17 July to Sunday 21 October  
**THE PLANT SEEKERS**  
The thrilling stories of some of history's most fanatical plant-hunting adventurers.  
→ Full info at [se1.net/12594](http://se1.net/12594)

**George and Jorgen**

9 Morocco Street  
www.georgeandjorgen.com  
Wed-Fri 10am-6pm; Sat 11am-6pm; Sun 12 noon-5pm;

Friday 13 July to Friday 3 August  
**CAPITAL**

The show considers the term capital in reference to the city and money. Works in photography and the moving image by seven artists form a unique set of immersive, embodied encounters and reflections upon London in a time of deep economic recession and international attention.  
→ Full info at [se1.net/12805](http://se1.net/12805)

**Hayward Gallery**

Southbank Centre T 020 7921 0813  
www.southbankcentre.co.uk/visualarts  
Daily 10am-6pm (Thu & Fri till 8pm); £11 (seniors £10, students £8, under-16 £4.50; under 12 free)

Until Wednesday 11 July  
**WIDE OPEN SCHOOL**

Morning, afternoon and evening sessions Tue-Sun; £10 per session  
A school with a programme devised and fuelled by the imaginations of more than 80 leading artists from over 40 different countries.  
→ Full info at [se1.net/12054](http://se1.net/12054)

Until Sunday 5 August  
**INVISIBLE: ART ABOUT THE UNSEEN 1957 - 2012**

The first UK survey exhibition of artworks that explore ideas related to the invisible, the hidden and the unknown.  
→ Full info at [se1.net/12613](http://se1.net/12613)

**Imperial War Museum**

Lambeth Road T 020 7416 5000  
london.iwm.org.uk  
Daily 10am-6pm; free

Until Sunday 23 September  
**BUILD THE TRUCE**

Explore the concept of truce, from challenging notions about the inevitability of war, through to truce as a method of conflict resolution and what it can mean on a practical level, such as allowing aid and medical organisations to enter areas of conflict which they cannot reach during periods of war.  
→ Full info at [se1.net/12532](http://se1.net/12532)

Until Friday 30 November  
**WAR STORY: SERVING IN AFGHANISTAN**

15 personal artefacts as well as digital screens packed with video footage, images and interviews.  
→ Full info at [se1.net/11695](http://se1.net/11695)

Until Tuesday 3 January  
**A FAMILY IN WARTIME**

How ordinary people braved the challenges of life on the home front during the Second World War.  
→ Full info at [se1.net/12368](http://se1.net/12368)

**Jacob's Island Gallery**

10-11 Shad Thames T 020 7407 8850  
www.jacobisland.co.uk  
Thu-Sun 12 noon-5pm;

Until Saturday 28 July  
**THE END**

A group exhibition that alludes to the tradition of memento mori and offers a contemporary interpretation. All works in the exhibition literally or metaphorically reference mortality and the brevity and fragility of human life.  
→ Full info at [se1.net/12661](http://se1.net/12661)

**Jerwood Space**

171 Union Street T 020 7654 0171  
www.jerwoodspace.co.uk  
Mon-Fri 10am-5pm; Sat & Sun 10am-3pm; free

Until Saturday 1 September  
**MATTHEW JOHNSTONE: PHOTOGRAPHS & SLIDESHOWS**

JVA Project Space presents a newly commissioned body of work by London-based artist Matthew Johnstone.  
→ Full info at [se1.net/12672](http://se1.net/12672)

**Lambeth Palace**

Lambeth Palace Road  
www.archbishopofcanterbury.org/palace

Until Saturday 14 July  
**ROYAL DEVOTION: MONARCHY & THE BOOK OF COMMON PRAYER**

Tue-Fri 11am-1.30pm & 2pm-5pm; Sat 11am-4pm (last entry 1 hour before closing); £12 (conc £10); under-17s free  
The close relationship between royalty and religion from medieval to modern times.  
→ Full info at [se1.net/12201](http://se1.net/12201)

**Llewellyn Alexander Fine Paintings**

124-126 The Cut T 020 7620 1322  
www.llewellynalexander.com  
Mon-Sat 10am-7.30pm; free

Until Saturday 18 August  
**NOT THE ROYAL ACADEMY**

Work rejected by the Summer Exhibition at the Royal Academy.  
→ Full info at [se1.net/12206](http://se1.net/12206)

**Menier Gallery**

51 Southwark Street T 020 7407 3222  
www.meniergallery.co.uk  
Mon-Sat 10am-6pm; free

Monday 9 to Saturday 14 July  
**GOING PLACES: ESPACIO ARTISTS**

This specially selected group of wanderers will be exploring notions of home and travel from a range of perspectives spanning the practical, spiritual and emotional journeys we all make every day.  
→ Full info at [se1.net/12806](http://se1.net/12806)

Tuesday 17 to Saturday 21 July  
**SLOW BURN: ABSTRACT INTELLIGENCE**

11am to 6pm; Sat 11am to 4pm  
Sculpture by and B E Cole and painting by Roger Wilson. Works are connected by a sense of place, process and a common interest in abstraction.  
→ Full info at [se1.net/1278](http://se1.net/1278)

+ SOUTH BANK FORUM +

Kate Hoey MP, Simon Hughes MP, and your local Councillors invite you on:

Thursday 5 July 2012, 7-9pm

Coin Street neighbourhood centre,

108 Stamford Street, SE1 9NH

ON THE AGENDA:

- THE IMPACT OF THE OLYMPICS ON THE NEIGHBOURHOOD
- BLACK PRINCE TRUST COMMUNITY HUB
- SHELL CENTRE REDEVELOPMENT LATEST PROPOSALS
- AND A SHORT FILM ABOUT THE WATERLOO ACTION CENTRE

+ DISCUSSIONS ON LOCAL ISSUES

Please note there will be no crèche service available



YOUR LIFE, YOUR NEIGHBOURHOOD, YOUR SAY

Next month in SE1

Highlights include:

- Feast at Guy's Hospital quadrangle
- Picture: Potters Fields
- and other Olympic-related events in SE1

next issue available Thursday 26 July

Tuesday 24 July to Sunday 12 August  
**SIGHTSEEING - LONDON: FRANK KIELY**

Punchy phone booths, buses and sporty cars traverse Frank Kiely's latest exhibition.

→ Full info at [se1.net/12807](http://se1.net/12807)

#### More London Riverside

Tooley Street  
[www.morelondon.com](http://www.morelondon.com)

Saturday 28 July to Wednesday 12 September  
**TOM STODDART: PERSPECTIVES**  
78 of Stoddart's most striking images in traditional black and white format.

→ Full info at [se1.net/12809](http://se1.net/12809)

#### Morley College

61 Westminster Bridge Road 020 7928 8501  
[www.morleycollege.ac.uk](http://www.morleycollege.ac.uk)

Tuesday 17 to Friday 27 July

#### MARATHON MAKE

Morley Gallery; Tue-Fri 10.30am-1.30pm; free

Two weeks of free workshops at Morley Gallery celebrating global and local links through the making of a giant city in clay.

→ Full info at [se1.net/12801](http://se1.net/12801)

Wednesday 4 to Friday 27 July

#### A WOMAN OF INFINITE RESOURCE

open during college hours  
An exhibition marking the 100th anniversary of the death of Morley College's founder, Emma Cons (1838-1912).

→ Full info at [se1.net/12815](http://se1.net/12815)

#### Poppy Sebire Gallery

Copperfield Street T 020 7928 3096  
[www.poppysebire.com](http://www.poppysebire.com)  
Tue-Sat 10am-6pm; free

Until Saturday 4 August

#### PENCIL AND PAPER

The power, subtlety, humour and ephemerality of the most basic of artistic tools: pencil and paper.

→ Full info at [se1.net/12797](http://se1.net/12797)

#### Purdy Hicks Gallery

65 Hopton Street T 020 7401 9229  
[www.purdyhicks.com](http://www.purdyhicks.com)  
Mon-Fri 10am-6pm; Sat 11am-6pm; free

Until Friday 24 August

#### RALPH FLECK: NEW PAINTINGS

→ Full info at [se1.net/12810](http://se1.net/12810)

#### Royal Festival Hall

Belvedere Road T 0871 663 2501  
[www.southbankcentre.co.uk](http://www.southbankcentre.co.uk)  
Foyers daily 10am-11pm;

Until Sunday 9 September

#### FESTIVAL OF THE WORLD MUSEUM

Designed by Wayne and Gerardine Hemingway.

→ Full info at [se1.net/12698](http://se1.net/12698)

#### Shakespeare's Globe

New Globe Walk T 020 7401 9919  
[www.shakespearesglobe.com](http://www.shakespearesglobe.com)  
10am-5pm (Apr-Oct opens 9am);  
Exhibition £12.50; children £8; students  
£11; family £35

Until Sunday 12 August

#### WITHIN THE WOODEN O

Inspired by Renaissance, Tudor and Jacobean paintings Rosalind Lyons Hudson's paintings imaginatively explore themes of ambiguity and transformation.

→ Full info at [se1.net/12692](http://se1.net/12692)

#### Siobhan Davies Studios

85 St George's Road  
[www.siobhandavies.com](http://www.siobhandavies.com)  
Mon-Thu 10am-8pm; Fri & Sat  
10am-5pm; free

Friday 6 July to Sunday 23 September

#### 60|40 STARTING POINT SERIES 2012

Three artists explore the relationship between the studios' activities and their own distinct practices.

→ Full info at [se1.net/12803](http://se1.net/12803)

#### Tate Modern

Bankside T 020 7887 8888  
[www.tate.org.uk/modern](http://www.tate.org.uk/modern)  
Sun-Thu 10am-6pm; Fri & Sat  
10am-10pm; free

Until Sunday 9 September

#### DAMIEN HIRST

£14 (conc £12.20)

The first substantial survey of Damien Hirst's work ever held in the UK.

→ Full info at [se1.net/11290](http://se1.net/11290)

Until Sunday 14 October

#### EDVARD MUNCH:

#### THE MODERN EYE

£14 (conc £12.20) + gift aid

Major exhibition which radically reassesses the work of Norwegian painter Edvard Munch (1863-1944).

→ Full info at [se1.net/12229](http://se1.net/12229)

Tuesday 17 July to Sunday 28 October

#### TINO SEHGAL: THE UNILEVER SERIES

Latest Turbine Hall installation.

→ Full info at [se1.net/10844](http://se1.net/10844)

Wednesday 18 July to Sunday 28 October

#### SUNG HWAN KIM

A major new commission by Korean artist Sung Hwan Kim. Hwan Kim's installation involves a unique form of story-telling which sees him interweave Korean culture, folklore and history, his own personal experiences and fantasy.

→ Full info at [se1.net/12820](http://se1.net/12820)

Wednesday 18 July to Sunday 28 October

#### LIS RHODES: LIGHT MUSIC

**SUZANNE LACY: THE CRYSTAL QUILT**  
Installations of recent major acquisitions of film and performance.

→ Full info at [se1.net/12821](http://se1.net/12821)

#### Tower Bridge Exhibition

Tower Bridge T 020 7940 3985  
[www.towerbridge.org.uk](http://www.towerbridge.org.uk)  
10am-5.30pm; £6 (conc £4.20; child  
£2.60)

Until Sunday 30 September

#### CITIES OF THE MODERN GAMES

26 large-scale full-colour images of all past host cities of the Modern Games,

from Athens in 1896 to Beijing in 2008.

→ Full info at [se1.net/12527](http://se1.net/12527)

#### Unicorn Theatre

147 Tooley Street T 020 7645 0560  
[www.unicorntheatre.com](http://www.unicorntheatre.com)

Thursday 26 July to Sunday 9 September

#### THE CITY: A DIFFERENT VIEW

The winning images from a photographic competition for young Londoners.

→ Full info at [se1.net/12779](http://se1.net/12779)

#### WAC Gallery

14 Baylis Road  
[www.waterlooactioncentre.co.uk](http://www.waterlooactioncentre.co.uk)  
Mon-Sat 11am-6.30pm; free

Monday 23 to Saturday 28 July

#### AFRICAN CONTEMPORARY ART

Chike Azuonye showcases his recent works inspired by African motifs, folklore and iconography.

→ Full info at [se1.net/12781](http://se1.net/12781)

#### White Cube Bermondsey

144-152 Bermondsey Street T 020 7930 5373  
[www.whitecube.com](http://www.whitecube.com)  
Wed-Sat 10am-6pm; Sun 12 noon-6pm;  
free

Until Sunday 8 July

#### DAMIEN HIRST: TWO WEEKS ONE SUMMER

Exhibition to coincide with the Hirst show at Tate Modern.

→ Full info at [se1.net/12623](http://se1.net/12623)

Until Sunday 8 July

#### BRUCE NAUMAN

Experimental and ground breaking films made between 1967 and 1969.

→ Full info at [se1.net/12666](http://se1.net/12666)

For the latest local  
news and events,  
follow us on Twitter

@se1

## Fulcher Edwards Ltd

Electrical Services



An established family run business based in Waterloo, small enough to care yet big enough to help you with all your domestic & commercial electrical/building safety requirements.

- Installation & Maintenance
- Electrical Testing Reports
- Homeowners & Landlords Certificates
- Fire Alarms
- Emergency Lighting
- Fire Safety

NICEIC, TrustMark, SafeContractor, Part P & ISO9001 accredited company.

Call us on **020 7922 1101**

Request a free quotation at  
[info@fulcheredwards.co.uk](mailto:info@fulcheredwards.co.uk)

Arch 253, 1 Lower Road,  
Waterloo Terminal, SE1 8SJ

## londonSE1

community website

## News you may have missed

### 22 arrested in Westminster

#### Bridge gaming clampdown

Nearly two dozen people have been arrested in a police clampdown on illegal gaming on Westminster Bridge.

...more at [www.London-SE1.co.uk/n6124](http://www.London-SE1.co.uk/n6124)

### Lord Lamont queries lack of Jubilee flags at Tate Modern

Former chancellor of the exchequer Lord Lamont of Lerwick has tabled a parliamentary question in the House of Lords querying the lack of decoration at Tate Modern for the Queen's Diamond Jubilee.

...more at [www.London-SE1.co.uk/n6120](http://www.London-SE1.co.uk/n6120)

### SE1 United youth charity appeals for support

Young people's charity SE1 United has marked nine years as a youth group with a reception at County Hall on the South Bank.

...more at [www.London-SE1.co.uk/n6111](http://www.London-SE1.co.uk/n6111)

### Gibbons Rents transformed into community garden

A new community garden has been created in a hidden alleyway between Magdalen Street and Holyrood Street - and local residents and workers are invited to bring plants to put their own mark on the space.

...more at [www.London-SE1.co.uk/n6109](http://www.London-SE1.co.uk/n6109)

### London Fire Brigade Museum escapes the axe

The London Fire and Emergency Planning Authority (LFEPA) has voted unanimously to keep the London Fire Brigade Museum in Southwark Bridge Road open to the public.

...more at [www.London-SE1.co.uk/n6105](http://www.London-SE1.co.uk/n6105)

### Borough Road Gallery opens

A new gallery devoted to David Bomberg and his Borough Group of artists has opened at London South Bank University.

...more at [www.London-SE1.co.uk/n6104](http://www.London-SE1.co.uk/n6104)

### Awards for White Cube and Bermondsey Island housing

The White Cube Bermondsey gallery and the new Bermondsey Island housing block have received RIBA awards.

...more at [www.London-SE1.co.uk/n6103](http://www.London-SE1.co.uk/n6103)

### £5 million boost for Old Vic

The Old Vic theatre has been granted funding of £5 million from the Department for Culture, Media and Sport, Arts Council England and Heritage Lottery Fund.

...more at [www.London-SE1.co.uk/n6109](http://www.London-SE1.co.uk/n6109)

### CBE for Dr Irene Bishop

Dr Irene Bishop, headteacher of St Saviour's & St Olave's Girls' School at Bricklayers Arms, has been awarded the CBE in the Queen's birthday honours list.

...more at [www.London-SE1.co.uk/n6092](http://www.London-SE1.co.uk/n6092)

### Six in race for Living Space

Six organisations have put forward bids to run the Living Space youth centre in Waterloo Road as part of Lambeth's 'cooperative council' programme to share responsibility for services with local groups and residents.

...more at [www.London-SE1.co.uk/n6082](http://www.London-SE1.co.uk/n6082)

### Markets open daily for Olympics

SE1's two largest food markets will open daily during the Olympic Games.

...more at [www.London-SE1.co.uk/n6074](http://www.London-SE1.co.uk/n6074)