

**THIS MONTH:** Open-air music at The Scoop p5 • Southwark Mysteries guided walks p4  
 Feast food festival at Guy's Hospital quadrangle • SummerFest at Archbishop's Park p3

**August 2012**

**in SE1**

**Issue 170 FREE**

**STEEL & SHAMASH**  
 THE WATERLOO COMMUNITY SOLICITORS

*We can help with all your legal problems*

- Family
- Children
- Housing
- Criminal

For a friendly professional service  
 Only two minutes from Waterloo Station

Contact Steel & Shamash  
 12 Baylis Road • Waterloo • London • SE1 7AA  
 Tel: 020 7803 3999  
 Email: mail@steelandshamash.co.uk

Moss man  
 climbs cathedral



**A life-size moss man has been installed on the walls of Southwark Cathedral to promote the Leprosy Mission Festival of Flowers.**

*The Climber* has been created by artist Chris Jones as the cathedral prepares to host the festival which runs from 23 to 26 August. The artistic director is award-winning floral designer Mig Kimpton.

- [www.themewfestivalofflowers.org.uk](http://www.themewfestivalofflowers.org.uk)
- See listing on page 4

## A sizzling summer



**The streets and open spaces of SE1 have been filled with all kinds of unexpected artworks and installations, like this giant shot-put at the Shell Centre.**

Southwark and Lambeth may not be hosting any sporting events but the Olympics and Paralympics have certainly made an impact on the area with a wide range of cultural events ranging from the House of Switzerland at London Bridge (page 3) to South African art at the Bargehouse (page 6) and Jamaican photography at the Elephant & Castle Shopping Centre (page 6).

For an overview all the Olympic and Paralympic-related activity in SE1 check out our special map at [www.London-SE1.co.uk/summer2012](http://www.London-SE1.co.uk/summer2012) and follow @SE1 on Twitter for the very latest updates.

## Southwark Festival revived

**Southwark Chamber of Commerce has organised a Festival of Music and Arts running from 1 to 15 August featuring three concerts and a multimedia art exhibition.**

"This revival of the annual Southwark Festival of Music and the Arts, which ran throughout the 1990s, is supported by the Southwark Chamber of Commerce and its associates," explained festival director Diana Stevenson.

She added: "We have combined free events with ticketed events so that all can enjoy excellent music and art. We hope to make this celebration of our cultural heritage here in Southwark an annual event in the summer festival calendar."

Souvenir festival programmes are being sold in aid of a local young people's charity, Southwark Young Pilgrims, which trains Southwark teenagers to provide tourist information to visitors.

- [www.southwarkcommerce.com](http://www.southwarkcommerce.com)
- See listings on pages 4 & 5

**FRANK HARRIS**  
 and Company

**South Bank Specialists**

**RESIDENTIAL SALES, LETTINGS and MANAGEMENT**

**123 Stamford Street SE1 9NN**  
**020 7620 3400**  
**[www.frankharris.co.uk](http://www.frankharris.co.uk)**

**ARLA**  
 Association of Residential Letting Agents

**NAEA**  
 National Association of Estate Agents

## in SE1

27 Blackfriars Road  
London SE1 8NYTel 020 7633 0766  
Web www.inSE1.co.uk© 2012 Bankside Press  
ISSN 1750-1334 (Print)  
ISSN 1750-1342 (Online)Editor  
**Leigh Hatts**  
leigh.hatts@banksidepress.com  
Production Editor  
**James Hatts**  
james.hatts@banksidepress.com  
Contributing writer  
**Marion Marples**

Printed by Copyprints Ltd

## ADVERTISING

For details of our competitive rates call us for a rate card on 020 7633 0766 or email [sales@inSE1.co.uk](mailto:sales@inSE1.co.uk). You can also download our rate card from [www.inSE1.co.uk](http://www.inSE1.co.uk)

## SUBSCRIPTIONS

To receive the next 12 issues by post in the UK please send a cheque for £10 to the address above, made payable to 'in SE1'. Please specify starting issue.

## LISTINGS INFORMATION

Listings for most types of local event are free; details of events to be considered for inclusion next month should be sent by **Wednesday 22 August** to [se1events@banksidepress.com](mailto:se1events@banksidepress.com) or by post.

## DISCLAIMER

Every effort is made to ensure the accuracy of our listings but all details are subject to alteration by venues and organisers and no responsibility can be accepted for any inaccuracies.

**londonSE1**  
community websiteWe also publish a community website, updated daily with local news and features and a lively discussion forum. Visit it at [www.London-SE1.co.uk](http://www.London-SE1.co.uk)

## [ SE1 Direct ]

To ensure that you don't miss out on anything that's happening in the area, make sure you receive our weekly email newsletter every Monday. Sign up today by visiting [www.SE1direct.co.uk](http://www.SE1direct.co.uk). With more than 7,300 subscribers, can you afford to miss out?

## This month in brief

## Gift Box

If you take a stroll through Southwark Cathedral's churchyard during the Olympic Games you may find yourself lured into a giant box. But what will you find inside? The Gift Box project is run by UN.GIFT (United Nations Global Initiative to Fight Human Trafficking) and Stop the Traffik to raise awareness of human trafficking and inspire visitors gathered in London for the Olympics to take action to stop this human rights abuse. [www.London-SE1.co.uk/n6211](http://www.London-SE1.co.uk/n6211)

## First Aid for Parents

Local resident Sarah Kohn has set up Early Bird First Aid which offers a variety of first aid courses including one specifically designed for new parents. [www.earlybirdfirstaid.com](http://www.earlybirdfirstaid.com)

## Borough Market Choir

Did you know that Borough Market has its own choir and it is open to all locals who want to sing? [www.boroughmarketchoir.org.uk](http://www.boroughmarketchoir.org.uk)

## Pop-up mini olympics

As we went to press, Bankside Open Spaces Trust announced that the Pop-up Mini Olympics at the Marlborough Playground in Union Street would continue beyond the end of July. Check [www.bost.org.uk](http://www.bost.org.uk) for details.

## Odeon at BFI IMAX

The British Film Institute has handed over the operation of its IMAX cinema at Waterloo to Odeon under a five-year concession agreement which began last month. During the next two months a Costa Coffee shop and Yog frozen probiotic yoghurt bar will open at the cinema. [www.bfi.org.uk/imax](http://www.bfi.org.uk/imax)

## CitizenM Reports

The new Lavington Street hotel is hosting a two-week programme (30 July to 10 August) celebrating citizen journalism. CitizenM is inviting visitors to learn how to report on London during the Olympics, capturing everything from the food scene and sports to fashion and street art. The hotel will host daily workshops and speaker events. [www.citizenMreports.com](http://www.citizenMreports.com)

## Rooftop gardening

On Tuesdays in August (11am-1pm) the Queen Elizabeth Hall roof garden is hosting free drop-in gardening sessions. Help the gardeners and learn how to grow vegetables and herbs. On Wednesdays (11am-1pm) there will be family garden activities. Be creative, explore a jungle of global vegetables, join a mini-beast safari, get your fingers muddy planting. Limited capacity: entry is on a first come, first served basis.

## Blogging for Beginners

Local writer Emily Benet, whose blog about working in the family shop on Tower Bridge Road became an acclaimed book, is running a Blogging for Beginners (and improvers) workshop on Saturday 18 August. Details at [www.emilybenet.blogspot.co.uk](http://www.emilybenet.blogspot.co.uk)

## Little Sun at Tate

Visitors to Tate Modern are invited to look at works of art in the dark using only the light of Olafur Eliasson's *Little Sun* solar-powered lamps. Eliasson is probably best known for the giant sun he created for *The Weather Project* which drew more than 2 million visitors to the Turbine Hall during its five-month installation in 2003 and 2004. The artist has now developed the *Little Sun* with the engineer Frederik Ottesen to focus attention on the power of solar light to improve lives. Tate Blackouts will take place between 10pm and midnight on Saturdays 4, 11 and 18 August. The events are free with the purchase of a Little Sun (£16.50).

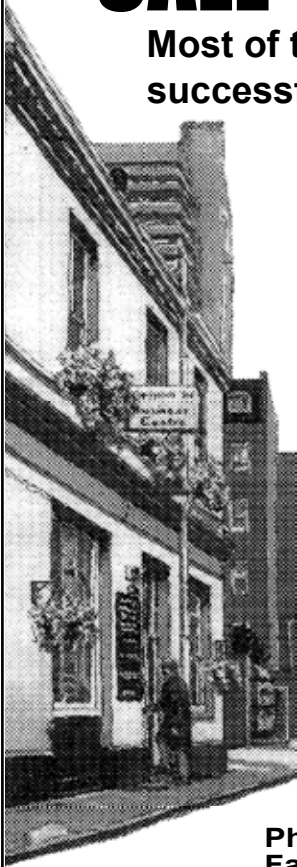
## SummerFest volunteers

Can you help make SummerFest (Friday 17 August) a success? People of all abilities and disabilities welcome. You must be at least 16 years old and available for four hours on 17 August. Lots of roles available: meet and greet, assist on stalls and activities, give guided tours of Archbishop's Park, interview people and set up/take down. All volunteers receive training, a free hot lunch on the day and a reference letter for future employment. Register by 3 August on 07588 502615 or email [abstripp@gmail.com](mailto:abstripp@gmail.com)

## CALL in the YARD

Most of the big and successful local firms

do when they have something to say and they would like us to give a sharp edge to it.

PRINT  
COPIES  
REPORTS  
BROCHURESCommunication  
of all kindsCopyprints Ltd  
BUSINESS CENTRE  
1 Talbot Yard  
SE1 1YP[www.copyprintsltd.co.uk](http://www.copyprintsltd.co.uk)Phone 020 7407 2079  
Fax 020 7403 5411

Enjoy the elegant yet vibrant atmosphere; a contemporary décor, with an Indian soul.

For further information or to book a table call  
t: 0207 407 0333

5-6 Cromwell Building, Redcross Way  
London, SE1 9HR

www.justmangotree.com  
eat@justmangotree.com

Open all day – 16 July to 16 September



Free home delivery available

## What's On

### August

Comprehensive local listings

## Special events

### Archbishop's Park

Carlisle Lane

Friday 17 August  
**SUMMERFEST**

12 noon-8pm; free  
The park comes alive with circus, bouncy castle, outdoor gallery, acoustic music and sport for all. People of all ages, abilities and disabilities welcome: have a go on a tricycle with Wheels for Wellbeing, get Dr Bike to fix your bicycle, join in Let's Get Cooking with Eden Caterers or make an artwork with Block 336. Visit the pop-up Cinema Museum, enjoy afternoon tea and cake then Pimms in the evening with acoustic music and a community choir.

→ Full info at [se1.net/12777](http://se1.net/12777)

### Bankside foreshore

meet at the steps near Shakespeare's Globe

Tuesday 7 August  
**POTMAKING**

12 noon-2pm; free  
Bankside STEWARDS invite you to join them at the pot making for the Firing on the Foreshore event at The Mayor's Thames Festival. Each year Bankside STEWARDS fire clay pots on two fires at Bankside during the Thames Festival. This year, the event will take place on 8 September. The group needs objects to fire so they would like you to help to make pots made with Thames clay to fire using Thames driftwood on the foreshore. No previous experience needed - just bags of enthusiasm! Artist Edith Slee will be on hand with lots of ideas. Suitable for all ages. Bankside

STEWARDS is a network of local residents and business contacts committed to caring for and promoting the past, present and future of the archaeology and environment of the Thames foreshore between Blackfriars and London Bridges at Bankside. They are an Adopt-a-River group of Thames21.

→ Full info at [se1.net/12909](http://se1.net/12909)

### Bankside riverside walkway

Bankside (near Millennium Bridge)

Until Sunday 9 September  
**PEREGRINES AT TATE MODERN**

12 noon-7pm; free  
A chance to see the peregrine falcons high above the Tate Modern chimney. The RSPB London Events Team will be on hand near the Millennium Bridge to help you with telescopes to give you the best views, and to give you information about these amazing birds which can reach speeds of 200 mph while chasing their lunch through the air. Experience the wonders of nature while in the heart of the city.

→ Full info at [se1.net/12682](http://se1.net/12682)

### Bernie Spain Gardens

Upper Ground  
[www.coinstreet.org](http://www.coinstreet.org)

Until Sunday 12 August  
**TARGET**

Target Corporation, one of the largest retailers in the United States, brings an oasis of relaxation to the South Bank. It will be a hotspot for fun including a photo booth, bocce and croquet, plus some fantastic giveaways.

→ Full info at [se1.net/13004](http://se1.net/13004)

### Glaziers Hall & environs

9 Montague Close  
T 020 7403 3300  
[www.glaziershall.co.uk](http://www.glaziershall.co.uk)

Until Sunday 12 August  
**HOUSE OF SWITZERLAND**

The official Swiss guest house at the Olympic Games. Big screen, live performances, events for children and much more.

→ Full info at [se1.net/11722](http://se1.net/11722)

### The Goodlife Centre

122 Webber Street  
T 020 7760 7613  
[www.thegoodlifecentre.co.uk](http://www.thegoodlifecentre.co.uk)

Friday 3 & 31 August

### OPEN HOUSE

4pm-7pm; free  
Come and see what The Goodlife Centre is all about. Visit the centre, meet the tutors, check out workshops and enjoy tea and biscuits.

→ Full info at [se1.net/13012](http://se1.net/13012)

### Guy's Hospital

Quadrangle, St Thomas Street  
[www.wefeast.co.uk](http://www.wefeast.co.uk)

Friday 3 to Sunday 5 August

### FEAST

Fri 6pm-midnight; Sat 12 noon-11pm;  
Sun 12 noon-9pm; £6

Three-day food festival featuring Moro, José Pizarro, Morito, Wright Brothers, St John Bread and many others. Organised by the team behind the Long Table night market in Hackney, Feast brings together top London restaurants, bars, artists and musicians.

→ Full info at [se1.net/12845](http://se1.net/12845)

### Imperial War Museum

Lambeth Road  
T 020 7416 5000  
[london.iwm.org.uk](http://london.iwm.org.uk)

Wednesday 1 August  
**TRANSFORMING IWM LONDON:  
MEET THE TEAM**

6.30pm-8.30pm  
IWM London is inviting local residents to meet the team behind the museum's proposed transformation, view the plans and find out more about the new First World War galleries being developed. There will also be a chance to visit the major exhibition *A Family in Wartime* which will be open specially for the event.

→ Full info at [se1.net/12972](http://se1.net/12972)

### London Bridge area

[www.discoverlondonbridge.co.uk](http://www.discoverlondonbridge.co.uk)

Until Sunday 12 August  
**LONDON BRIDGE LIVE ARTS**

10am-12 noon & 2pm-4pm at Hay's

Galleria, Guy's Hospital and St John's Churchyard; free

Team London Bridge has commissioned 25 street performers aged 25 and under to provide colour and entertainment every day of the Olympic and Paralympic Games. Performances range from hula hoop to live painting, puppeteering to acoustic guitar and interactive improv to dance lessons. Some acts are solo performances while others are large theatre companies. The wide range of creative groups will create vibrant cultural spaces for residents, visitors and members of the business community and will reinforce London Bridge as a major hub this summer. Performers were recruited through IdeasTap, an arts charity set up to help young, creative people at the start of their careers.

→ Full info at [se1.net/13034](http://se1.net/13034)

### The Miller

96 Snowfields  
[www.themiller.co.uk](http://www.themiller.co.uk)

Saturday 25 August  
**WONDER HILL MARKET**

12 noon-5pm; free  
Handmade, craft and vintage finds from designer-makers and crafters. Bar, food and cake.

→ Full info at [se1.net/12954](http://se1.net/12954)

### Mint Street Adventure Playground

Southwark Bridge Road

Friday 3 August  
**FUN DAY**

12 noon-5pm; free  
Games, music, sports, art, fun and food for all the family. Featuring Toni the Magician and puppets, stencilling, badge making, sports sessions, bike repairs and more.

→ Full info at [se1.net/12973](http://se1.net/12973)

### Potters Fields Park

Tooley Street  
[www.pottersfields.co.uk](http://www.pottersfields.co.uk)

Until Sunday 9 September  
**PICTURE: POTTERS FIELDS**

Daily 10am-10pm; free  
Watch the best action from the Olympic and Paralympic Games for free live on

# CONNECTING LONDON

Whatever IT takes

## 0207 407 1335

support@connectinglondon.com

129 Great Suffolk Street, London, SE1 1PP

www.connectinglondon.com



# Your Local IT Company

We can help you with all of your IT needs:

- Maintenance and support contracts.
- PC support, repair, recovery and disinfection services.
- Competitive Home and Business Broadband Solutions.
- Web hosting and web design.
- Full server and virtualization solutions.
- "CLOUD" services including email hosting.
- Mobile Communications and BlackBerry services.
- Engineer labour rates start at £50+VAT per hour for the SE1.

a big screen in Potters Fields Park. From Bollywood dance to short films by young Londoners, walkabout characters, steel pans and the Extreme Postal Force, the park will host a full line up of entertainment too.

→ Full info at [se1.net/13039](http://se1.net/13039)

### Rockingham Community Centre

Falmouth Road T 020 7403 7475  
[www.rockinghamestate.org.uk](http://www.rockinghamestate.org.uk)

### Saturday 25 August COMMUNITY FAIR

1pm-4pm  
Young Volunteers Drive presents a community fair featuring an exhibition of crafts, stalls with items for sale and a raffle. Supported by United St Saviour's Charity, Southwark Council, Tesco and Progress London.

→ Full info at [se1.net/12938](http://se1.net/12938)

### Setchell TRA Hall

Hazel Way

### Saturday 4 August JUMBLE SALE

2pm-4pm; 20p  
Great bargains - everything must go.

→ Full info at [se1.net/12770](http://se1.net/12770)

### Southwark Cathedral

London Bridge T 020 7367 6700  
[www.southwarkcathedral.org.uk](http://www.southwarkcathedral.org.uk)

Thursday 2 to Saturday 4 August

### BOOK SALE

12 noon-6pm  
Secondhand book sale organised by the Friends of Southwark Cathedral.

→ Full info at [se1.net/12951](http://se1.net/12951)

Thursday 23 to Sunday 26 August

### THE LEPROSY MISSION FESTIVAL OF FLOWERS

Thu 10am-7pm; Fri 10am-9pm; Sat 10am-6pm; Sun 1pm-5.30pm; £14 (under-15s free)

People from all over the world will descend on London to celebrate the 30th Olympiad and the 14th Paralympics. The Cathedral will be the magnificent backdrop for a Festival of Flowers with the theme of 'Transformation'. The artistic director for the festival is Mig Kimpton, international floral designer and multi-award winner including two gold medals at RHS Chelsea Flower Show.

→ Full info at [se1.net/8565](http://se1.net/8565)

### Trinity Church Square

Trinity Church Square

### Saturday 4 & 11 August POP-UP BOOKSTALL

9am-dusk (weather permitting)  
A table of secondhand books (fiction and non-fiction), CDs and DVDs. Most items priced 50p outside 57 Trinity Church Square. Different stock every week. Proceeds in aid of Trinity Newington Residents' Association funds.

→ Full info at [se1.net/12993](http://se1.net/12993)

### Unicorn Theatre

147 Tooley Street T 020 7645 0560  
[www.unicorntheatre.com](http://www.unicorntheatre.com)

Until Sunday 12 August

### CHILL OUT ZONE

Mon-Sat 12 noon-8pm; Sun 12 noon-5pm; free

The Unicorn is offering an antidote to the riverside crowds by turning its Tooley Street foyer into a chill-out zone. The cafe offers reasonably priced homemade cakes and cookies, juice and healthy snacks, wine and fairtrade tea and coffee. Free film screening every day with comfy bean bags and popcorn.

→ Full info at [se1.net/13033](http://se1.net/13033)

### Woolfson & Tay

12 Bermondsey Square T 020 7407 9316  
[www.woolfsonandtay.com](http://www.woolfsonandtay.com)

### Wednesday 1 August CULINARY ADVENTURES AND QUEER TASTERS

7pm-9pm; free  
Join Southwark LGBT Network for an international exploration of sights, tastes and memories - from Malaysian street food, the American Trailer Park, to the Spanish Tapas Bar. Frances Tay shares some interesting food stories involving fruit bats and four legged friends, and will be offering sample tastings of Malaysian Chicken Curry. Justin Varney delves in to the world of Sister inspired indulgence and Down Home Trailer Park cookin'. Nacho Diaz Vazquez talks Galician tapas and the wonders of the humble potato. Free admission, tea and tapas. Bar available.

→ Full info at [se1.net/12952](http://se1.net/12952)

### Saturday 18 August 366 DAYS OF KINDNESS - COME AND JOIN IN

11am-7pm  
Meet writer, performer and comedian Bernadette Russell, who will be exhibiting her work 366 Days of Kindness at W&T during August. In response to the London riots, Bernadette was inspired to do one act of kindness for a stranger everyday for a year. Bernadette will be at the shop throughout the day, and invites you to come and see the exhibition, say hello, do an act of kindness for a stranger and share your tales with her.

→ Full info at [se1.net/13016](http://se1.net/13016)

### Children & family

#### HMS Belfast

Morgans Lane T 020 7940 6300  
[hmsbelfast.iwm.org.uk](http://hmsbelfast.iwm.org.uk)  
£14; senior citizen and student conc  
£11.20; under-16s free

Saturday 11 to Sunday 19 August

### TATTOO T-SHIRTS

11am-12.30pm & 2pm-4pm  
Get creative designing your own tattoo shapes on t-shirts and learn all about the traditions behind original naval tattoos. Entry included in general admission price. This free drop-in event is suitable for all ages but only with parental supervision.

→ Full info at [se1.net/12679](http://se1.net/12679)

### Imperial War Museum

Lambeth Road T 020 7416 5000  
[london.iwm.org.uk](http://london.iwm.org.uk)

### Saturday 4 to Sunday 12 August 'MAKE DO AND MEND' QUILT

11am-1pm & 2pm-4pm; free  
Communal art activity linked to the new A Family in Wartime exhibition. Free drop-in activities for all ages with parental supervision.

→ Full info at [se1.net/12680](http://se1.net/12680)

Saturday 25 to Friday 31 August

### BUILD THE TRUCE

11am-1pm & 2pm-4pm; free  
Call a truce, whatever your differences, and hear a slimy story of slugs, snails and truce time tales. Find out what united the slugs and snails in this funny and inspiring tale of truce and make your own unique artwork inspired by the story. Linked to the Build the Truce exhibition. Free drop-in activities for all ages with parental supervision.

→ Full info at [se1.net/12681](http://se1.net/12681)

### Talks & literature

#### Waterloo Library

114-118 Lower Marsh T 020 7926 8750  
[www.lambeth.gov.uk](http://www.lambeth.gov.uk)

### Thursday 9 August WATERLOO LIBRARY BOOK GROUP

6.30pm; free  
Discussing Theodora: Actress, Empress, Whore by Stella Duffy. The library buys 15 copies of each title chosen. The titles range from contemporary bestsellers, to award-winners and the occasional classic. New members always welcome. Attending the group is free but there is a small charge for refreshments (wine and crisps) for those who want them. Contact librarian Stephen Males on 020 7926 8751 for further details.

→ Full info at [se1.net/12967](http://se1.net/12967)

#### Woolfson & Tay

12 Bermondsey Square T 020 7407 9316  
[www.woolfsonandtay.com](http://www.woolfsonandtay.com)

### Thursday 23 August MEET THE AUTHORS

7pm; free  
And Other Stories is a not-for-private-profit literary publishing house that aims to publish world-class writing. This event presents three of their exciting recently-published authors: Deborah Levy, Iosi Havilio and Christoph Simon.

→ Full info at [se1.net/12924](http://se1.net/12924)

### Church services

#### Southwark Cathedral

London Bridge T 020 7367 6700  
[www.southwarkcathedral.org.uk](http://www.southwarkcathedral.org.uk)

### Saturday 4 August 250TH ANNIVERSARY SERVICE OF THE SWISS CHURCH IN LONDON

11am  
An ecumenical service. Everybody is warmly invited to this celebration.

→ Full info at [se1.net/12976](http://se1.net/12976)

### Sunday 5 August CELEBRATING DIVERSITY

3pm  
Part of a series of special services at Southwark Cathedral, St Paul's and Westminster Abbey during the Olympic Games.

→ Full info at [se1.net/12955](http://se1.net/12955)

### Guided walks

#### Archbishop's Park

Carlisle Lane

### Monday 13 August ARCHBISHOP'S PARK WALK

1pm; free; booking essential  
07588 502615 or  
[friendsofarchbishopspark@gmail.com](mailto:friendsofarchbishopspark@gmail.com)  
Join the Friends of Archbishop's Park for a 45-minute guided tour as part of the Living Memory heritage project. Explore the heritage of this lovely Victorian park, teeming with wildlife. Find out about Archbishop Temple, the old tuck shop and discover the oldest feature in the park. View some archive photos to compare the old and the new and hear about future plans, including SummerFest and a pond. Suggested donation to FoAP £3.

→ Full info at [se1.net/12960](http://se1.net/12960)

#### Rose Theatre Trust

56 Park Street T 020 7261 9565  
[www.rosetheatre.org.uk](http://www.rosetheatre.org.uk)

### Monday 13 August A TOUR OF ELIZABETHAN BANKSIDE WITH THE ROSE

7pm; £15 (conc £12) from 020 7261 9565  
or [boxoffice@rosetheatre.org.uk](mailto:boxoffice@rosetheatre.org.uk)  
Join the Rose Theatre Trust for a tour of Elizabethan London's Liberty of the Clink, home of the Bishop of Winchester, the famous Rose and Globe Theatres and the foul industries that even the Elizabethans considered unsightly. Hear about London's three cities, the Frost Fairs and the Winchester Geese, culminating with exclusive access to the Rose, Bankside where you'll hear the history of Bankside's first theatre.

→ Full info at [se1.net/12862](http://se1.net/12862)

### Southwark Mysteries

Walks start at Tabard Street Piazza next to St George the Martyr  
[www.southwarkmysteries.co.uk/guided-walks](http://www.southwarkmysteries.co.uk/guided-walks)

Wednesday 1 August

### DICKENS WALK

6.30pm; £10 (conc £7); booking advised  
Discover the most historic part of London with writer and performer John Constable, author of Secret Bankside. Celebrating the 200th anniversary of Charles Dickens' birth, this walk explores his childhood encounter with the Victorian underworld, visiting places which cast a shadow over his entire life and inspired scenes in his novels from Little Dorrit to Oliver Twist.

→ Full info at [se1.net/13025](http://se1.net/13025)

Thursday 2 August

### ROMAN LONDON REVISITED

6.30pm; £10 (conc £7); booking advised  
Guided walk with John Constable. Recent excavations near London Bridge have uncovered the sites of Roman baths, a market-arcade, temples and a cemetery with the bones of a female gladiator. This walk uncovers 2,000 years of settlement around Borough and Bankside.

→ Full info at [se1.net/13031](http://se1.net/13031)

Monday 6 August

### SHAKESPEARE'S BANKSIDE

11am; £10 (conc £7); booking advised  
Guided walk with John Constable. London's oldest pleasure-quarter and the birth of English theatre. Taverns, bear-pits, theatres and stews - licensed by the Bishop of Winchester. This walk conjures up an unforgettable gallery of Elizabethan characters!

→ Full info at [se1.net/13029](http://se1.net/13029)

Monday 6 August

### SHAKESPEARE'S BANKSIDE

6.30pm; £10 (conc £7); booking advised

As above.

→ Full info at [se1.net/13030](http://se1.net/13030)

Tuesday 7 August

### DICKENS WALK

11am; £10 (conc £7); booking advised

As above.

→ Full info at [se1.net/13026](http://se1.net/13026)

Tuesday 7 August

### DICKENS WALK

6.30pm; £10 (conc £7); booking advised

As above.

→ Full info at [se1.net/13027](http://se1.net/13027)

Wednesday 8 August

### ROMAN LONDON REVISITED

11am; £10 (conc £7); booking advised

As above.

→ Full info at [se1.net/13032](http://se1.net/13032)

Wednesday 8 August

### DICKENS WALK

6.30pm; £10 (conc £7); booking advised

As above.

→ Full info at [se1.net/13028](http://se1.net/13028)

### Music

#### Hay's Galleria

Tooley Street  
[www.haysgalleria.co.uk](http://www.haysgalleria.co.uk)

Sunday 5 August

### NATIONAL SYMPHONY ORCHESTRA

4.30pm; free  
The National Symphony Orchestra conducted by Anthony Inglis will perform a concert of festive music on an English theme.

→ Full info at [se1.net/12486](http://se1.net/12486)

### St George's Cathedral

Lambeth Road T 020 7928 5256  
[www.southwark-rc-cathedral.org.uk](http://www.southwark-rc-cathedral.org.uk)

Thursday 2 August

### CORO CERVANTES

7.30pm; £5-£20 from [www.southwarkcommerce.com](http://www.southwarkcommerce.com)  
A special celebration concert with the Southwark Chamber of Commerce. Carlos Aransay will be conducting the Spanish/London choir Coro Cervantes and the guitarist Morgan will perform a variety of sacred and celebratory music.

→ Full info at [se1.net/12487](http://se1.net/12487)

Friday 10 August

### THE MUSIC OF ENGLISH ROMANTIC

Follow us  
on Twitter  
@se1

**ELECTRICIAN**  
No job too small!  
07850 767283  
020 8761 6012  
[angelo@glennies.net](mailto:angelo@glennies.net)

**COMPOSERS AND THEIR CONTEMPORARIES**

7.30pm; £5-£20 from www.southwarkcommerce.com  
This recital for cello, piano and voice will be performed by Caesura celebrating the Olympics 2012 on the 200th anniversary of Pugin's wedding in the cathedral that Pugin designed and built. Caesura is formed by cellist Joseph Spooner, pianist Nicholas Bosworth and friends for the occasion.  
→ Full info at [se1.net/12488](http://se1.net/12488)

**St Mary Magdalen**

Bermondsey Street  
www.stmarysbermondsey.org.uk

Friday 3 August  
**CHAMBER MUSIC CONCERT**

7pm; £10 on the door  
Chamber music performed by professional musicians. Programme includes Schubert Quartet No. 15 in G major D. 887.  
→ Full info at [se1.net/12950](http://se1.net/12950)

**The Scoop**

More London Riverside  
www.morelondon.com/scoop.html

Wednesday 8 August  
**WEST END KIDS**

12.30pm & 6.30pm; free  
West End Kids is the UK's highest profile musical theatre song and dance troupe, made up of talented young singer/dancers from across the South of England. They will be performing two very different routines to suit the lunchtime and evening audiences.  
→ Full info at [se1.net/12873](http://se1.net/12873)

Thursday 9 August  
**WE SING YOU SING**

12.30pm; free  
We Sing U Sing is a charity that believes by creating, rehearsing and performing music, young people can help to improve their self-esteem. Led by professional musicians, watch the joy and enthusiasm, or join in!  
→ Full info at [se1.net/12874](http://se1.net/12874)

Thursday 9 August  
**LONDON GAY MEN'S CHORUS**

6.30pm; free  
The return of Europe's largest and best known gay men's choir. They will perform a wide repertoire with their usual excellence and enthusiasm.  
→ Full info at [se1.net/12875](http://se1.net/12875)

Friday 10 August  
**KLAUS & CHANTELE'S SONGWRITING LUNCH HOUR**

12.30pm; free  
Listen to some of Klaus White and Chantelle Duncan's music and contribute to the songwriting process. All ideas welcome!  
→ Full info at [se1.net/12876](http://se1.net/12876)

Friday 10 August  
**THE ALLSTARS COLLECTIVE**

6.30pm; free  
The AllStars Collective return each Friday as part of their summer residency at More London. Gathering here every Friday throughout the Music Festival there will be a selection of 40 of the UK's top session musicians who make up The AllStars.  
→ Full info at [se1.net/12877](http://se1.net/12877)

Wednesday 15 August  
**SASKIA SAYS**

12.30pm; free  
Saskia Says are a pop-rock four piece band that performs catchy, feel-good tunes. They are part of the EMI Music Sound Foundation, an independent music education charity.  
→ Full info at [se1.net/12878](http://se1.net/12878)

Wednesday 15 August  
**RONNIE SCOTT'S REJECTS & SWING-DANCE LESSONS**

6.30pm; free  
Fronted by the sassy singer Hazel Holder, Ronnie Scott's Rejects' repertoire explores the great show tunes of the 1930s and 40s. The evening's entertainment will be preceded by a beginners' fun swing-dance lesson.  
→ Full info at [se1.net/12879](http://se1.net/12879)

Thursday 16 August  
**GREG HEATH/NICK MEIER GROUP**

12.30pm; free

Highly acclaimed UK-based Swiss guitarist Nicolas Meier has teamed up with Kiwi born tenor sax virtuoso Greg Heath to form this exciting, energetic and highly interactive quartet.  
→ Full info at [se1.net/12880](http://se1.net/12880)

Thursday 16 August  
**MONTANA FOUR**

6.30pm; free  
Klaus White, Lawrie Bolton, Dan Hale & Rob Parker.  
→ Full info at [se1.net/12881](http://se1.net/12881)

Friday 17 August  
**FRANCESCA GUARINO**

12.30pm; free  
Scottish born singer-songwriter Francesca Guarino has been writing and producing her music for over a decade. Her performing style encompasses influences from Kate Bush to Leonard Cohen.  
→ Full info at [se1.net/12882](http://se1.net/12882)

Friday 17 August  
**THE ALLSTARS COLLECTIVE**

6.30pm; free  
Join the AllStars Collective for week 2 of the super group's marathon Friday night session at The Scoop. Non-stop music and dancing from some of the world's top session musicians.  
→ Full info at [se1.net/12883](http://se1.net/12883)

Wednesday 22 August  
**THE FALLEN HEROES**

12.30pm; free  
This band plays contemporary New Orleans style music performed by musicians who have lived and played in the city.  
→ Full info at [se1.net/12884](http://se1.net/12884)

Wednesday 22 August  
**ATONGO ZIMBA**

6.30pm; free  
Atongo Zimba was born in northern Ghana and performs music influenced from traditional and popular African music that he was exposed to in his youth.  
→ Full info at [se1.net/12885](http://se1.net/12885)

Thursday 23 August  
**LITTLE BIG HORN**

12.30pm; free  
Little Big Horn is a ten-piece ensemble and will feature many modern jazz classics. This is a hard-swinging yet smooth outfit with the emphasis on solos from London's finest musicians.  
→ Full info at [se1.net/12886](http://se1.net/12886)

Thursday 23 August  
**MICHELE DREES TAP DANCE**

6.30pm; free  
Learn to swing with your feet! Join in the fun and learn a basic tap swing beat then sit back and watch the amazing Junior Laniyan tap dance with the accomplished drummer Michele Drees and her stellar trio.  
→ Full info at [se1.net/12887](http://se1.net/12887)

Friday 24 August  
**CIYO BROWN**

12.30pm; free  
Ciyo has toured with Courtney Pine, Byron Wallen, Ronnie Laws plus a host of others and offers an eclectic mix of musical themes from around the world featuring dynamic arrangements and interpretation.  
→ Full info at [se1.net/12888](http://se1.net/12888)

Friday 24 August  
**THE ALLSTARS COLLECTIVE**

6.30pm; free  
The penultimate performance from these unsung heroes of the music industry. Come and hear the cream of the UK's session players live in concert.  
→ Full info at [se1.net/12889](http://se1.net/12889)

Wednesday 29 August  
**THE ELECTRIC EXPERIENCE**

12.30pm; free  
The Electric Experience are a three piece band known for playing classic rock from the sixties plus some of their own original music.  
→ Full info at [se1.net/12890](http://se1.net/12890)

Wednesday 29 August  
**VOXTET**

6.30pm; free  
State-of-the-art vocal harmony Voxtet give an all-embracing repertoire taking their influence from Manhattan Transfer, New York Voices and Take Six.  
→ Full info at [se1.net/12891](http://se1.net/12891)

Thursday 30 August  
**EMI MUSIC SOUND FOUNDATION**

12.30pm; free  
Lunchtime performances by talented musicians from the EMI Music Sound Foundation. This is an independent music education charity, established in 1997 to improve young peoples' access to music education.  
→ Full info at [se1.net/12892](http://se1.net/12892)

Thursday 30 August  
**PACIFICO BLUES JAM**

6.30pm; free  
Guitarist Chris Newland and his virtuoso sidekick on blues harp Paul Pacifico, have a real yin & yang approach to the blues that make their gigs that extra bit special.  
→ Full info at [se1.net/12893](http://se1.net/12893)

Friday 31 August  
**BEXFACTOR**

12.30pm; free  
London Borough of Bexley's music talent development project BexFactor returns. A great group of young people taught by musicians from the AllStars Collective present their own tunes and a range of popular covers.  
→ Full info at [se1.net/12894](http://se1.net/12894)

Friday 31 August  
**THE ALLSTARS COLLECTIVE**

6.30pm; free  
Come and join the AllStars and special guests in the finale to the More London Music Festival.  
→ Full info at [se1.net/12895](http://se1.net/12895)

**Theatre**

**Calder Bookshop**

51 The Cut T 020 7620 2900  
www.calderbookshop.com

Thursday 16 August to Sunday 9 September  
**TERMINATES AT KENNINGTON**

Thu-Sun 8pm; £10 (conc £8) from 020 7620 2900  
A new play by Simon Bennett set around the 2011 London riots. Directed by Sergio Amigo.  
→ Full info at [se1.net/13018](http://se1.net/13018)

**Menier Chocolate Factory**

51 Southwark Street T 020 7907 7060  
www.menierchocolatefactory.com

Until Sunday 12 August  
**TORCH SONG TRILOGY**

Tue-Sat 8pm; Sat & Sun 3.30pm; £29.50; meal deal £37.00  
Harvey Fierstein's Tony Award winning comedy-drama tells the poignant story of an outsider's search for love and acceptance. Originally conceived and performed in three acts, drag queen Arnold encounters passion, thrills, love and loss. This intimate and powerful play, is bursting with courage and sharp wit, as Arnold fights for his place in the world and his right to happiness. With David Bedella and Sara Kestelman. Directed by Douglas Hodge.  
→ Full info at [se1.net/12482](http://se1.net/12482)

**National Theatre**

South Bank T 020 7452 3000  
www.nationaltheatre.org.uk

Wednesday 22 to Saturday 25 August  
**CESARIO**

Pop-up Workshop; Times vary; £2.50  
Bryony Lavery's new play is inspired by the twins in Shakespeare's plays. At once both funny and touching whilst dealing with themes of belonging and loss and is a summer treat for family audiences. *Cesario* is commissioned for the World Shakespeare Festival which is produced by the Royal Shakespeare Company for London 2012 Festival.  
→ Full info at [se1.net/13008](http://se1.net/13008)

Until Thursday 6 September  
**LONDON ROAD**

Oliver Theatre; In repertoire; £12-£32  
London Road documents the events of 2006, when the quiet rural town of Ipswich was shattered by the discovery of the bodies of five women. Adam Cork's music uses the melodic speech patterns captured on Alecky Blythe's recorded interviews with the people of Ipswich to create this extraordinary work.  
→ Full info at [se1.net/12899](http://se1.net/12899)

Until Wednesday 12 September  
**THE DOCTOR'S DILEMMA**

Lyttelton Theatre; In repertoire; £12-£47  
Disturbingly funny and psychologically incisive, Bernard Shaw takes on with an irreverent glee the dubious ethics of the men who play God.  
→ Full info at [se1.net/12901](http://se1.net/12901)

Until Wednesday 10 October  
**THE LAST OF THE HAUSSMANS**

Lyttelton Theatre; In repertoire; £12-£47  
A new play by Stephen Beresford. Anarchic, feisty but growing old, high society drop-out Judy Haussman remains in spirit with the Ashrams of the 1960s while holding court in her dilapidated Art Deco house on the Devon coast.  
→ Full info at [se1.net/12713](http://se1.net/12713)

Until Saturday 27 October  
**THE CURIOUS INCIDENT OF THE DOG IN THE NIGHT-TIME**

Cottesloe Theatre; In repertoire; £12-£32  
Adapted by Simon Stephens from the novel by Mark Haddon. Christopher, fifteen years old, stands beside Mrs Shears' dead dog. It has been speared with a garden fork, it is seven minutes after midnight and Christopher is under suspicion. He records each fact in the book he is writing to solve the mystery of who murdered Wellington.  
→ Full info at [se1.net/12900](http://se1.net/12900)

Until Wednesday 31 October  
**TIMON OF ATHENS**

Oliver Theatre; In repertoire; £12-£32  
Simon Russell Beale takes the title role in Shakespeare's strange fable of conspicuous consumption, debt and ruin, written in collaboration with Thomas Middleton. Part of the World Shakespeare Festival, produced by the Royal Shakespeare Company for London 2012 Festival.  
→ Full info at [se1.net/12898](http://se1.net/12898)

**Oasis Church Waterloo**

1a Kennington Road  
www.church.co.uk

Wednesday 1 to Friday 10 August  
**CHARIOT: THE ERIC LIDDELL STORY**

7.45pm; £12 (conc £10)  
Made famous by the multi award-winning film 'Chariots of Fire', this brand new dramatisation brings to life on stage the incredibly inspiring story of Eric Liddell.  
→ Full info at [se1.net/12863](http://se1.net/12863)

**Rose Theatre**

56 Park Street T 020 7261 9565  
www.rosetheatre.org.uk

Sunday 5 to Sunday 12 August  
**THE RAPE OF LUCRECE**

Tue-Sat 7.30pm; Sun 3pm; £12 (conc £10) from 020 7261 9565 or boxoffice@rosetheatre.org.uk  
Gerard Logan stars in the first ever solo adaptation of Shakespeare's brilliant, brutal narrative poem about the dreadful crime of rape and its aftershock. Shakespeare goes beyond the obvious, shining a light on a band of human behaviour encompassing the bestial and the beautiful.  
→ Full info at [se1.net/11998](http://se1.net/11998)

Thursday 2 to Saturday 25 August  
**VENUS AND ADONIS**

Tue-Sat 7.30pm; Sun 3pm; £12 (conc £10) from 020 7261 9565 or boxoffice@rosetheatre.org.uk  
The Rose presents Shakespeare's sexually explicit work. A staged version of his poem based on parts of Ovid's *Metamorphoses* and an insight into the psychologies behind love, youthful lust and grief. Note: performances 2-5 August and 14-25 August.  
→ Full info at [se1.net/11997](http://se1.net/11997)

**Shakespeare's Globe**

New Globe Walk T 020 7401 9919  
www.shakespearesglobe.com

Until Sunday 26 August  
**HENRY V**

In repertoire; £5-£32  
Directed by Dominic Dromgoole with Jamie Parker as Henry V.  
→ Full info at [se1.net/12694](http://se1.net/12694)

Until Saturday 13 October  
**THE TAMING OF THE SHREW**

In repertoire; £5-£32  
Directed by Toby Frow. With Samantha

Spiro as Katherina. Simon Paisley Day plays Petruccio.

→ Full info at [se1.net/12695](http://se1.net/12695)

Until Saturday 13 October

### RICHARD III

In repertoire; £5-£32

Directed by Tim Carroll, designed by Jenny Tiramani, music by Claire van Kampen, with Mark Rylance as Richard III. Roger Lloyd Pack, making his Globe debut, will play the Duke of Buckingham.

→ Full info at [se1.net/12696](http://se1.net/12696)

### Southwark Needle

London Bridge

Until Sunday 5 August

### JACK THE RIPPER'S LONDON

The Stone Spike; Wed-Sat 12 noon, 3pm & 8pm; Sun 12 noon and 3pm; £12 from [www.seetickets.com](http://www.seetickets.com)

Crow Theatre presents a promenade, interactive recreation of Victorian Whitechapel underneath London Bridge Station. In a show suitable for adults and children, actors will lead you through a tunnel to the streets of east London in 1888. You will follow the story of the last victim, Mary Kelly, and her turbulent relationship with her boyfriend. From market place to music hall, pub to pavement, meet the vigilantes and police, share a drink with the colourful characters of the East End and maybe... just maybe... follow the footsteps of the elusive and infamous Jack the Ripper.

→ Full info at [se1.net/12933](http://se1.net/12933)

### Southwark Playhouse

Shipwright Yard T 020 7407 0234  
[www.southwarkplayhouse.co.uk](http://www.southwarkplayhouse.co.uk)

Wednesday 15 to Saturday 18 August

### MUCH ADO ABOUT NOTHING

7.45pm; £10, £14, £18

Shakespeare's comedy is re-imagined and re-fashioned by the best of Oxford University's theatrical talent, appearing courtesy of the Cameron Mackintosh Foundation. The battle of the sexes has never been more explosive.

→ Full info at [se1.net/12896](http://se1.net/12896)

Until Saturday 25 August

### MACK AND MABEL

7.30pm (8pm during Olympics);  
£10/£16.50/£22.50

Directed by Thom Southerland. 1920s Hollywood. A time when movies were silent and cinema was magic. Romance turns to jealousy as stardom invites scandal and deceit.

→ Full info at [se1.net/12814](http://se1.net/12814)

Wednesday 22 August to Saturday 8

September

### THE ILLUSION

7.45pm; £10, £14, £18

Tony Kushner's adaptation of Pierre Corneille's work is a tender comic tale of passion, regret, love, and magic. Performed by a new ensemble of RADA graduate actors.

→ Full info at [se1.net/12897](http://se1.net/12897)

### The Scoop

More London Riverside  
[www.morelondon.com/scoop.html](http://www.morelondon.com/scoop.html)

Until Sunday 5 August

### ORESTEIA

Thu-Sun: The Trojan Horse 6.30pm;

Agamemnon 8pm; Orestes 9.30pm; free To celebrate a decade of creating award-winning open-air theatre next to City Hall, Steam Industry Free Theatre presents a rare staging of the Oresteia trilogy by Aeschylus - a three part epic drama charting Ancient Greece's journey from chaos and war to peace, justice and the harmony that inspired the Olympic ideal.

→ Full info at [se1.net/12720](http://se1.net/12720)

### Union Theatre

204 Union Street T 020 7261 9876  
[www.uniontheatre.biz](http://www.uniontheatre.biz)

Until Saturday 4 August

### UNION GOLD

times vary; prices vary

West End stars, cabaret, standup comedy, live music, new writing and more.

→ Full info at [se1.net/12854](http://se1.net/12854)

Tuesday 21 to Saturday 25 August

### STILL LIFE

7.30pm (also 9pm on Thu/Fri/Sat); £10

Noel Coward's Still Life, from his series 'Tonight at 8:30', famously forms

the basis of the classic 1946 film *Brief Encounter*. Coward himself, along with Gertrude Lawrence, performed in the 1936 production of the piece and 'Still Life' has been the subject of several revivals. DeadAnt returned to Coward's original text to bring this heartstring-tugging tale to the City's Bridewell Theatre at lunchtimes during July. The success of that run has prompted the journey across river to the Union Theatre, which will be transformed into the fictional Milford Junction Station tearoom, serving as the setting for the lives and loves of three couples in 1936.

→ Full info at [se1.net/13037](http://se1.net/13037)

### Young Vic

66 The Cut T 020 7928 6363  
[www.youngvic.org](http://www.youngvic.org)

Until Saturday 4 August

### A DOLL'S HOUSE

Mon-Sat 7.30pm; Wed & Sat 2.30pm;  
£10-£30

Former artistic director of the Gate Theatre Carrie Cracknell directs Simon Stephens' new version of this Ibsen classic, designed by Olivier and Tony Award-winner Ian MacNeil.

→ Full info at [se1.net/12245](http://se1.net/12245)

## Cinema

### Calder Bookshop

51 The Cut T 020 7620 2900  
[www.calderbookshop.com](http://www.calderbookshop.com)

Tuesday 7 August

### SEBASTIANE

7.30pm; free

Cineclub series of Derek Jarman films.

→ Full info at [se1.net/13019](http://se1.net/13019)

Tuesday 14 August

### JUBILEE

7.30pm; free

Cineclub series of Derek Jarman films.

→ Full info at [se1.net/13020](http://se1.net/13020)

Tuesday 21 August

### THE TEMPEST

7.30pm; free

Cineclub series of Derek Jarman films.

→ Full info at [se1.net/13021](http://se1.net/13021)

Tuesday 28 August

### THE ANGELIC CONVERSION

7.30pm; free

Cineclub series of Derek Jarman films.

→ Full info at [se1.net/13022](http://se1.net/13022)

## Exhibitions

### Advanced Graphics London

32 Long Lane T 020 7407 2055  
[www.advancedgraphics.co.uk](http://www.advancedgraphics.co.uk)  
Tue-Fri 10am-6pm; Sat 10am-4pm; free

Until Saturday 11 August

### MR KITCHING'S LONDON

Letterpress prints by Alan Kitching.

→ Full info at [se1.net/12793](http://se1.net/12793)

### Anise Gallery

13a Shad Thames T 020 7403 9938  
[www.anisegallery.co.uk](http://www.anisegallery.co.uk)  
Sat & Sun 10am-6pm; free

Until Sunday 26 August

### THE NARRATORS' LINE

Anise Gallery brings together the work of Alex Schramm and Kyle Henderson, two artists inspired by their architectural training to produce exquisite linework relating to theories of biology, industrialisation and ethnography.

→ Full info at [se1.net/13009](http://se1.net/13009)

### Architecture Foundation

136-148 Tooley Street T 020 7084 6767  
[www.architecturefoundation.org.uk](http://www.architecturefoundation.org.uk)  
Tue-Sat 12 noon-6pm; free

Until Saturday 25 August

### BUREAU SPECTACULAR: HEFNER/BEUYS HOUSE

Chicago-based Canadian architect Jimenez Lai's Bureau Spectacular transforms the AF's Project Space with a habitable installation; creating a modular home of 'super-furniture'. Riffing on notions of privacy and publicity, and the contemporary performance of living in public, the installation merges the exhibitionism of Hugh Hefner with the live-art of Joseph Beuys.

→ Full info at [se1.net/12710](http://se1.net/12710)

### ASC Gallery

Erlang House, 128 Blackfriars Road  
Mon-Sat 1.30pm-5pm; free

Until Friday 3 August

### THERE IS NOT AND NEVER HAS BEEN ANYTHING TO UNDERSTAND!

A group show curated by David Burrows and Simon O'Sullivan (Plastique Fantastique Communiqué)

→ Full info at [se1.net/12789](http://se1.net/12789)

### Bankside Gallery

48 Hopton Street T 020 7928 7521  
[www.banksidegallery.com](http://www.banksidegallery.com)  
Daily 11am-6pm; free

Until Sunday 12 August

### ROYAL WATERCOLOUR SOCIETY: PICTURING BRITAIN 2012

11am-7pm [last admission 6.30pm]

The spectacle of the Olympiad and the pinnacle of sporting endeavour will be the theme of this special exhibition. Members of the Royal Watercolour Society will also be undertaking a 'Recording Britain Project' as a distinct part of this exhibition, by making paintings that depict the full panoply of the Diamond Jubilee celebrations, from the River Pageant on the Thames to the beacons being lit in celebration across Britain.

→ Full info at [se1.net/12279](http://se1.net/12279)

Friday 17 August to Sunday 2 September

### RE OPEN

The Royal Society of Painter-Printmakers is launching a brand new printmaking exhibition: the RE Open. Designed as a showcase for excellence in printmaking, the exhibition will also provide a fascinating forum for consideration of current trends and new directions in this ever evolving and extraordinarily creative art form.

→ Full info at [se1.net/12646](http://se1.net/12646)

### Bargehouse

Oxo Tower Wharf T 020 7401 2255  
[www.coinstreet.org](http://www.coinstreet.org)  
Daily 11am-6pm; free

Until Sunday 12 August

### COMING HOME

Artwork created in South Africa during the apartheid years of 1948 to 1990. During this period works by black artists and artists who expressed criticism of the regime were not considered worthy of inclusion in South Africa public or private collections. This resulted in the purchase of the works by individuals residing outside the country. The Ifa Lethu Foundation was formed in 2005 with the aim of repatriating these artworks to their country of origin where they could take their rightful place as heritage objects. The exhibition includes approximately 50 works and also includes an installation of resistance posters from the era.

→ Full info at [se1.net/13038](http://se1.net/13038)

### Bermondsey Project Space

46 Willow Walk  
[www.bowarts.org/studios/se1-studios](http://www.bowarts.org/studios/se1-studios)  
Thu-Sun 1pm-6pm; free

Until Friday 10 August

### OUTSIDE THE WHITE CUBE

New annual exhibition in support of Crisis, the national charity for single homeless people, featuring the work of both emerging and established artists.

→ Full info at [se1.net/12584](http://se1.net/12584)

Friday 17 to Saturday 25 August

### PERCEPTION

This event will celebrate the senses and challenge people's expectations of the traditional exhibition environment through a multi-sensory experience that will emotionally engage participants through experiments in all avenues of perception. The curators are inviting people to touch and interact with the work, taste, smell and listen to the stimulus around them to create a narrative for themselves. Held in support of RNIB, a charity supporting blind and partially sighted people in the UK.

→ Full info at [se1.net/12980](http://se1.net/12980)

### Bicha Gallery

7 Gabriel's Wharf T 020 7928 0083  
[www.bicha.co.uk](http://www.bicha.co.uk)  
Tue-Sun 11am-7pm; free

Friday 3 to Sunday 26 August

### PASSAGE 2012: CLINTON DE MENEZES

Clinton De Menezes continues his investigation into the politics and the poetics that define the contemporary landscape (space) and in the conceptual, physical and metaphorical processes of regeneration and degeneration.

→ Full info at [se1.net/12526](http://se1.net/12526)

### Borough Road Gallery

103 Borough Road T 020 7815 5737  
[www.boroughroadgallery.co.uk](http://www.boroughroadgallery.co.uk)  
Wed-Fri 1pm-5pm; Sat 12 noon-5pm; free

Until Saturday 13 October

### A DAVID BOMBERG LEGACY: THE SARAH ROSE COLLECTION

First exhibition in new gallery set up to display the collection of works by David Bomberg and associated artists donated to LSBU by Sarah Rose.

→ Full info at [se1.net/12771](http://se1.net/12771)

### Cuming Museum

151 Walworth Road T 020 7525 2332  
[www.southwark.gov.uk/cumingmuseum](http://www.southwark.gov.uk/cumingmuseum)  
Tue-Sat 10am-5pm; free

Until Saturday 27 October

### FACT INTO FICTION: CHARLES DICKENS - A SOUTHWARK CHILDHOOD

Dickens's experiences of the Borough area during his time there in 1824. The places, people and living conditions he experienced during his short time in the area provided inspiration and context to many characters and narratives in his later writing. The exhibition explores these key locations, such as the Marshalsea Prison, St George the Martyr Church and Mint Street workhouse. The exhibition uses objects, artworks and illustrations from the museum's collection to map Dickens's experiences and how they informed his writing.

→ Full info at [se1.net/12214](http://se1.net/12214)

### Design Museum

Shad Thames T 0870 909 9009  
[www.designmuseum.org](http://www.designmuseum.org)  
Daily 10am-5.45pm (last admission 5.15pm); £10 (conc £9; students 6); Under 12s free

Until Sunday 18 November

### DESIGNED TO WIN

The various ways in which design has helped athletes break records and push the boundaries of what was previously thought possible.

→ Full info at [se1.net/11774](http://se1.net/11774)

Wednesday 29 August to Sunday 29 January

### DESIGNERS IN RESIDENCE

This exhibition showcases the work of young designers at the beginning of their career. The programme includes a range of events, offering the designers the opportunity to interact and engage with the public, whilst using this platform as a test-bed for ideas, designs and innovations.

→ Full info at [se1.net/11775](http://se1.net/11775)

### Elephant & Castle Shopping Centre

Elephant and Castle

Until Wednesday 15 August

### INTERPRETATIONS: THE JAMAICAN EXPERIENCE

Unit 237; Mon-Sat 12 noon-7pm; free

An exhibition of works by Jamaican photographer Neil Kenlock and youth photographers and advocates in the Resolution Project.

→ Full info at [se1.net/12970](http://se1.net/12970)

### Fashion & Textile Museum

83 Bermondsey Street T 020 7407 8664  
[www.ftmlondon.org](http://www.ftmlondon.org)  
Exhibitions Tue-Sat 11am-6pm; £7 (conc £5); under-12s free

Until Saturday 27 October

### POP! DESIGN, CULTURE, FASHION

In the 1950s a new wave of rock-n-roll and youth culture from America swept the country and the world. The mix of popular images and music with art and fashion would change the way people

dressed - blurring the boundaries of commerce, culture and style.

→ Full info at [se1.net/11754](http://se1.net/11754)

**Florence Nightingale Museum**

St Thomas' Hospital T 020 7620 0374  
www.florence-nightingale.co.uk  
Daily 10am-5pm; £5.80 (conc £4.80, family £16)

Until Friday 31 August  
**BONE**

An eclectic exhibition of around 60 objects exploring the rich history and substance of bone, across cultures, throughout time and between disciplines.

→ Full info at [se1.net/12804](http://se1.net/12804)

**gallery@oxo**

Oxo Tower Wharf T 020 7021 1686  
www.coinstreet.org  
Daily 11am-6pm; free

Until Sunday 12 August  
**SCULPTURE AND SPORT: A CELEBRATION FOR 2012**

A collection of 30 bronze sculptural studies by 30 artists of 30 different Olympic and Paralympic sports.

→ Full info at [se1.net/12276](http://se1.net/12276)

Wednesday 15 August to Sunday 9 September  
**RIVERS OF THE WORLD**

An exhibition featuring artworks created by secondary school pupils in London and their partner schools in six different countries.

Part of **The Mayor's Thames Festival**  
→ Full info at [se1.net/13006](http://se1.net/13006)

**Garden Museum**

Lambeth Palace Road T 020 7401 8865  
www.gardenmuseum.org.uk  
Daily 10.30am-5pm (closed 1st Mon of month); £7 (conc £6; under-16s free)

Until Sunday 21 October  
**THE PLANT SEEKERS**

The thrilling stories of some of history's most fanatical plant-hunting adventurers are brought to life. The exhibition of material from the world-renowned RHS Lindley Library tells the story of many of history's most important plant collectors, who travelled the globe and risked death, disease and bandits to transform our landscapes and grow our knowledge about plants and horticulture.

→ Full info at [se1.net/12594](http://se1.net/12594)

**George and Jorgen**

9 Morocco Street  
www.georgeandjorgen.com  
Wed-Fri 10am-6pm; Sat 11am-6pm; Sun 12 noon-5pm;

Until Friday 3 August  
**CAPITAL**

This exhibition proposes a re-consideration of London as a capital city. The show considers the term capital, in reference to the city and money. Works in photography and the moving image by seven artists form a unique set of immersive, embodied, encounters and reflections upon London in a strange time of deep economic recession and international attention.

→ Full info at [se1.net/12805](http://se1.net/12805)

**Hayward Gallery**

Southbank Centre T 020 7921 0813  
www.southbankcentre.co.uk/visualarts  
Daily 10am-6pm (Thu & Fri till 8pm);  
£11 (seniors £10, students £8, under-16 £4.50; under 12 free)

Until Sunday 5 August  
**INVISIBLE: ART ABOUT THE UNSEEN 1957 - 2012**

The first UK survey exhibition of artworks that explore ideas related to the invisible, the hidden and the unknown.

→ Full info at [se1.net/12613](http://se1.net/12613)

**Imperial War Museum**

Lambeth Road T 020 7416 5000  
london.iwm.org.uk  
Daily 10am-6pm; free

Until Sunday 23 September  
**BUILD THE TRUCE**

At the first Olympic Games in 776BC an 'Olympic Truce' was created in order to enable athletes from Greece's warring cities to travel and compete in safety. Reinstated at the 1992 games, the Olympic Truce continues to exist today. Drawing on this theme, in 2009 IWM launched 'Build the Truce', a learning initiative which works with organisations and schools across the country to explore the concepts of truce and conflict resolution. This intimate and interactive display at IWM London will bring the themes and discussion explored through this project to life.

→ Full info at [se1.net/12532](http://se1.net/12532)

Until Friday 30 November  
**WAR STORY: SERVING IN AFGHANISTAN**

15 personal artefacts as well as digital screens packed with video footage, images and interviews.

→ Full info at [se1.net/11695](http://se1.net/11695)

Until Tuesday 3 January  
**A FAMILY IN WARTIME**

On 3 September 1939, Britain declared war on Germany. For every family in Britain life would never be the same again. Through the eyes of the Allpress family this exhibition tells the story of how ordinary people braved the challenges of life on the home front during the Second World War.

→ Full info at [se1.net/12368](http://se1.net/12368)

**Jerwood Space**

171 Union Street T 020 7654 0171  
www.jerwoodspace.co.uk  
Mon-Fri 10am-5pm; Sat & Sun 10am-3pm; free

Until Saturday 1 September  
**MATTHEW JOHNSTONE: PHOTOGRAPHS & SLIDESHOWS**

JVA Project Space; JVA Project Space presents a newly commissioned body of work by London-based artist Matthew Johnstone.

→ Full info at [se1.net/12672](http://se1.net/12672)

**Llewellyn Alexander Fine Paintings**

124-126 The Cut T 020 7620 1322  
www.llewellynalexander.com  
Mon-Sat 10am-7.30pm; free

Until Saturday 18 August  
**NOT THE ROYAL ACADEMY**

Every year over 8,000 paintings are submitted to the Summer Exhibition at the Royal Academy - the largest open art exhibition in the world. Only around 800 actually make it on to the walls. So what happens to all the artists that have been rejected? As soon as the artists get their rejection slips from the Royal Academy many of them collect their pictures and set off across the river to Llewellyn Alexander at Waterloo.

→ Full info at [se1.net/12206](http://se1.net/12206)

**Menier Gallery**

51 Southwark Street T 020 7407 3222  
www.meniergallery.co.uk  
Mon-Sat 10am-6pm; free

Until Sunday 12 August  
**SIGHTSEEING - LONDON: FRANK KIELY**

Punchy phone booths, buses and sporty cars traverse Frank Kiely's latest exhibition. The sights of London that appear in Kiely's work are all familiar, but many may not be on your standard tourist map. This exhibition will feature two massive paintings, a series of screenprints, and a display of smaller drawings, collages and paintings from across the city. Kiely challenges visitors to spot hidden elements in his work through a number of interactive games.

→ Full info at [se1.net/12807](http://se1.net/12807)

Monday 13 to Saturday 18 August  
**SNOWBUGSTUDIO**

Debut London exhibition.  
→ Full info at [se1.net/12971](http://se1.net/12971)

Wednesday 29 August to Saturday 1 September  
**SLICE**

Four artists, four singular approaches - stillness, disorder, balance, disintegration.

→ Full info at [se1.net/12796](http://se1.net/12796)

**More London Riverside**

Tooley Street  
www.morelondon.com

Until Wednesday 12 September  
**TOM STODDART: PERSPECTIVES**

Open-air exhibition featuring 78 of Stoddart's most striking images in black and white format.

→ Full info at [se1.net/12809](http://se1.net/12809)

**Nolia's Gallery**

60 Great Suffolk Street T 020 7701 9111  
www.noliassgallery.co.uk  
Wed-Fri 12 noon-6pm; Sat & Sun 12 noon-4pm; free

Friday 24 to Monday 27 August  
**GRAPHIC LONDON**

Exhibition of original black and white photography of some of London's best-known buildings from the City and Canary Wharf to London Bridge.

→ Full info at [se1.net/12978](http://se1.net/12978)

**Old Operating Theatre, Museum and Herb Garret**

9a St Thomas Street T 020 7188 2679  
www.thegarret.org.uk  
Daily 10.30am-5pm; £5.90; conc £4.90;  
child £3.40; family (2+4) £13.80

Thursday 9 August to Saturday 1 September  
**FRINGE ZOOLOGY: THE SPECIMENS OF ALEX CF**

Artist Alex CF offers the public a unique opportunity to see his bizarre crafted specimens in the setting of the Old Operating Theatre. A collection of 19th-century biological specimens of species thought to be the stuff of legend, from Vampires to dragons, their preserved remains and enigmatic stories the life's work of curator and custodian Alex CF.

→ Full info at [se1.net/12979](http://se1.net/12979)

**Poppy Sebire Gallery**

Copperfield Street T 020 7928 3096  
www.poppysbire.com  
Tue-Sat 10am-6pm; free

Until Saturday 4 August  
**PENCIL AND PAPER**

This exhibition explores the power, subtlety, humour and ephemerality of the most basic of artistic tools: pencil and paper. It presents a selection of original and rarely-seen works, including two pieces created specifically for this show by Michael Raedecker and Chris Ofili. And it makes the case for these simple media, by demonstrating their limitless potential.

→ Full info at [se1.net/12797](http://se1.net/12797)

**Purdy Hicks Gallery**

65 Hopton Street T 020 7401 9229  
www.purdyhicks.com  
Mon-Fri 10am-6pm; Sat 11am-6pm; free

Until Friday 24 August  
**RALPH FLECK: NEW PAINTINGS**

There is only one subject that preoccupies the German painter Ralph Fleck, and that is painting. His subjects range from cityscapes and crowds, to subtly monochromatic paintings of the Alps and the twisted detritus of rubbish heaps. Although these themes are revisited again and again they do not form series that extend in a temporal sequence but, rather, they are played off against each other like voices in a continuous conversation.

→ Full info at [se1.net/12810](http://se1.net/12810)

**Royal Festival Hall**

Belvedere Road T 0871 663 2501  
www.southbankcentre.co.uk  
Foyers daily 10am-11pm; free

Until Sunday 9 September  
**FESTIVAL OF THE WORLD MUSEUM**

Designed by Wayne and Gerardine Hemingway. Through a series of immersive and interactive environments, which present artworks, documentary footage, objects and memorabilia, it offers an exploration of the thinkers, artists and communities who have inspired and contributed to Southbank Centre's Festival of the World.

→ Full info at [se1.net/12698](http://se1.net/12698)

**londonSE1**  
community website

Some recent  
forum topics

- Whitesmiths Arms
- Tooley Street toilets
- Seagulls
- Victorian costumes
- Village East
- Bermondsey Farmers' Market
- Mack & Mabel
- C10 bus service
- Man and van
- Finding fresh sage

..and dozens more topics

join the debate at  
[www.London-SE1.co.uk](http://www.London-SE1.co.uk)

Next month in SE1

Highlights include:

- Waterloo Food Festival
- The Mayor's Thames Festival
- Bermondsey Street Festival
- Open House London
- Merge Festival
- London Design Festival

next issue available Tuesday 28 August

**Shakespeare's Globe**

New Globe Walk T 020 7401 9919  
www.shakespearesglobe.com  
9am-5pm; £12.50; children £8; students  
£11; family £35

Until Sunday 12 August

**WITHIN THE WOODEN O**

Inspired by Renaissance, Tudor and Jacobean paintings, Rosalind Lyons Hudson's works imaginatively explore themes of ambiguity and transformation. The paintings have been developed from observation of performance, rehearsal and archival research during her time as artist in residence at Shakespeare's Globe, and are being displayed for the first time at the Globe Exhibition.

Full info at [se1.net/12692](http://se1.net/12692)

**Siobhan Davies Studios**

85 St George's Road  
www.siobhandavies.com

Mon-Thu 10am-8pm; Fri & Sat  
10am-5pm; free

Until Sunday 23 September

**60/40 STARTING POINT SERIES 2012**

This summer 60/40 presents the fourth exhibition in its Starting point series at Siobhan Davies Studios. Each year three artists are commissioned to create new works in response to the building. This year Ane Christensen (maker), Fliss Quick (jeweller) and Rhian Solomon (visual artist) explore the relationship between the studios' activities and their own distinct practices.

Full info at [se1.net/12803](http://se1.net/12803)

**Southwark Cathedral**

London Bridge T 020 7367 6700  
www.southwarkcathedral.org.uk

Refectory Mon-Fri 8.30am-6pm; Sat &  
Sun 10am-6pm; free

Wednesday 15 August to Monday 24  
September

**BOTANICAL PAINTINGS**

Vicky Mappin, a member of the Society of Botanical Artists. The exhibition is supported by Wilkins Kennedy FKC.

Full info at [se1.net/12586](http://se1.net/12586)

**Tate Modern**

Bankside T 020 7887 8888  
www.tate.org.uk/modern  
Sun-Thu 10am-6pm; Fri & Sat  
10am-10pm; free

Until Sunday 9 September

**DAMIEN HIRST**

£14 (conc £12.20)

The first substantial survey of Damien Hirst's work ever held in the UK.

Full info at [se1.net/11290](http://se1.net/11290)

Until Sunday 14 October

**EDVARD MUNCH: THE MODERN EYE**

£14 (conc £12.20) + gift aid

Major exhibition which radically reasserts the work of Norwegian painter Edvard Munch (1863-1944).

Full info at [se1.net/12229](http://se1.net/12229)

Until Sunday 28 October

**TINO SEHGAL: THE UNILEVER SERIES**

Performance installation in the Turbine Hall.

Full info at [se1.net/10844](http://se1.net/10844)

Until Sunday 28 October

**SUNG HWAN KIM**

The Tanks;

A major new commission by Korean artist Sung Hwan Kim. Hwan Kim's installation involves a unique form of story-telling which sees him interweave Korean culture, folklore and history, his own personal experiences and fantasy.

Full info at [se1.net/12820](http://se1.net/12820)

Until Sunday 28 October

**LIS RHODES: LIGHT MUSIC AND SUZANNE LACY: THE CRYSTAL QUILT**

The Tanks; free

Installations of recent major acquisitions of film and performance.

Full info at [se1.net/12821](http://se1.net/12821)

**Tower Bridge Exhibition**

Tower Bridge T 020 7940 3985  
www.towerbridge.org.uk  
10am-5.30pm; £6 (conc £4.20; child  
£2.60)

Until Sunday 30 September

**CITIES OF THE MODERN GAMES**

26 large-scale full-colour images of all past host cities of the Modern Games, from Athens in 1896 to Beijing in 2008.

Full info at [se1.net/12527](http://se1.net/12527)

**Unicorn Theatre**

147 Tooley Street T 020 7645 0560  
www.unicorntheatre.com

Until Sunday 9 September

**THE CITY: A DIFFERENT VIEW**

The winning images from a photographic competition for young Londoners.

Full info at [se1.net/12779](http://se1.net/12779)

**Unit 24**

20 Great Guildford Street T 020 7401 2142  
unit24.info

Mon-Wed 10am-5pm, Thu & Fri  
10am-6.30pm;

Until Monday 3 September

**OLAF WENDT : RETROSPECTIVE**

Retrospective exhibition of works by visual effects artist, supervisor and director Olaf Wendt.

Full info at [se1.net/12981](http://se1.net/12981)

**White Cube Bermondsey**

144-152 Bermondsey Street T 020 7930 5373  
www.whitecube.com

Wed-Sat 10am-6pm; Sun 12 noon-6pm;  
free

Until Sunday 26 August

**ZHANG HUAN: THE MOUNTAIN IS STILL A MOUNTAIN**

Zhang Huan presents a series of large-scale ash paintings for his second exhibition at White Cube.

Full info at [se1.net/12984](http://se1.net/12984)

Until Sunday 26 August

**DANIEL TURNER**

Daniel Turner is a Brooklyn-based artist known for using industrial materials, ranging from kerosene to charcoal, in

his practice.

Full info at [se1.net/12985](http://se1.net/12985)

Until Sunday 26 August

**JULIA DAULT**

Julia Dault lives and works in Brooklyn, a rich source for artificial materials with which she plays on the taste values attributed to texture, pattern and colour. Pleather, vinyl and gold lamé are gathered in bulging loops on the floor, in precarious relation to each other, and to her paintings, in which Dault forefronts the layering of pattern and paint with strokes that erase or even perforate.

Full info at [se1.net/12986](http://se1.net/12986)

Until Sunday 26 August

**RAPHAEL HEFTI**

Raphael Hefti seeks transformative reactions in his chosen materials. His 'Lycopodium' photographs show the nebulous emergence of light across massive stretches of photosensitive paper; his exposure of steel to extreme temperatures prompts the material to escape its defining features and become something else, with an aura of colour and a shattered surface structure.

Full info at [se1.net/12987](http://se1.net/12987)

**Woolfson & Tay**

12 Bermondsey Square T 020 7407 9316  
www.woolfsonandtay.com

Mon-Sat 11am-7pm; Sun 11am-5pm;

Wednesday 1 to Friday 31 August

**366 DAYS OF KINDNESS: A****RESPONSE TO THE LONDON RIOTS**

Writer, performer and comedian Bernadette Russell decided to respond to the London riots of August 2011 by "doing a kind thing for a stranger every single day of the next year". This exhibition is her opportunity to display the results of her year-long experiment. She hopes it will inspire and make you smile.

Full info at [se1.net/13015](http://se1.net/13015)

**The Tango Club**

dance, arts & well-being

8 The Leather Market, Weston Street, SE1 3ER

*It takes two to, but one can too...*

Thu	19:30 – 21:00	Continuing Tango class
	21:00 – 22:30	Practica (the chance to practice)
Fri	20:00 – 21:00	Tango - class
	21:00 – 02:00	Milonga8 - dancing
Sat		various activities see website
Sun	15:00 – 19:00	Tango Tea (1st Sunday of month)
	19:00 – 23:00	Tango Lounge (3rd Sunday of month) & Strictly Tango Courses for Beginners (3 Sundays)

*But there's so much more...*

Mon	19:30 – 22:30	Rhythm Rascals (Swing Patrol)
Tue	18:00 – 19:00	Yoga with Nino
	20:00 – 23:00	West Coast Swing
Thu	12:30 – 13:15	Express Pilates with Bogusha
Sat	11:30 – 12:30	Nia - mind , body & movement
	13:00 – 14:15	Pilates with Bogusha

*September Exhibition*

**SOMETHING OUT OF NOTHING**

CERAMIC ASSEMBLAGES  
GREGORY WARREN WILSON

Opening – 18:30 - 21:00 Monday 17th September  
Showing – 11:00 - 21:00 18th, 19th, 20th September

*new loft space for social dance, exhibitions, mind & body*

[www.TheTangoClub.com](http://www.TheTangoClub.com)

**londonSE1  
community website****Hydrogen buses off the road**

The hydrogen-powered buses that usually ply the South Bank and Bankside on route RV1 will be conspicuous by their absence during the Olympics and Paralympics.

...more at [www.London-SE1.co.uk/n6197](http://www.London-SE1.co.uk/n6197)

**Minister "very concerned" by Mandela Way complaints**

Postal affairs minister Norman Lamb said he was "very concerned" to hear complaints from representatives of SE1 and SE16 residents and businesses about the service provided by Royal Mail's Mandela Way delivery office.

...more at [www.London-SE1.co.uk/n6196](http://www.London-SE1.co.uk/n6196)

**Tate Modern, wheel & Tower Bridge on Olympic stamps**

Three SE1 landmarks feature on a new set of postage stamps to be issued to coincide with the Olympics opening ceremony.

...more at [www.London-SE1.co.uk/n6201](http://www.London-SE1.co.uk/n6201)

**Southwark Super Tram**

The promoters of an ambitious plan to build a privately-funded tram line from London Bridge to Camberwell claim it could be up and running within just two years.

...more at [www.London-SE1.co.uk/n6184](http://www.London-SE1.co.uk/n6184)

**Borough leaders pour cold water on parish councils**

The ruling Labour groups in both Southwark and Lambeth have come out against the creation of parish councils to provide a new layer of local democracy at sub-borough level.

...more at [www.London-SE1.co.uk/n6183](http://www.London-SE1.co.uk/n6183)

**News you may have missed****Prince Andrew and Ffion Hague to abseil down Shard**

The Duke of York and the wife of the foreign secretary are among a select group who will abseil down the Shard next month.

...more at [www.London-SE1.co.uk/n6170](http://www.London-SE1.co.uk/n6170)

**Government approves new South Bank secondary school**

The Government has approved plans by Oasis Community Learning to open a new secondary 'free school' in Waterloo.

...more at [www.London-SE1.co.uk/n6166](http://www.London-SE1.co.uk/n6166)

**Tower Bridge Road payday loan shop rejected - again**

Southwark councillors have voted for a second time to reject an application by The Money Shop to open a payday loan service in Tower Bridge Road.

...more at [www.London-SE1.co.uk/n6161](http://www.London-SE1.co.uk/n6161)

**Sainsbury's to open supermarket at Guy's Hospital**

A new combined Sainsbury's Local food store and outpatients' pharmacy is to open on Great Maze Pond at Guy's Hospital.

...more at [www.London-SE1.co.uk/n6155](http://www.London-SE1.co.uk/n6155)

**Waterloo Library prefab 'unacceptable' in 21st century**

Lambeth's cabinet has agreed to carry out an options appraisal on the future of Waterloo Library in Lower Marsh with the intention of providing a permanent building for the service.

...more at [www.London-SE1.co.uk/n6153](http://www.London-SE1.co.uk/n6153)