

February

in SE1

Issue 44

February 2002

Free

Surprise as Tate Tower plan withdrawn ... for now

LONDON TOWN plc, the developers behind the controversial proposals for a 32-storey apartment skyscraper on Bankside next to Tate Modern, have withdrawn the plan.

The decision, reached just before the Christmas holiday, was made public shortly before last month's meeting of Southwark Planning Committee. It is understood that London Town was expecting the planned building, which would have been higher than Tate Modern's chimney, to be rejected. Talks have begun with Southwark on submitting a revised scheme for the Hopton Street site. The existing Victorian stable building is now in scaffolding ready for demolition.

It has been suggested that in the present climate it may be difficult to sell flats over 15 storeys high. The new Hopton plan is expected to have a larger footprint to help reduce its height.

Neighbour and campaigner Ruth Rattenbury says: "It would have been total madness to build a huge glass tower on such a constricted site. It was a monstrous idea which would have obliterated views of Tate Modern and St Paul's."

However, there are new plans for a 27-storey block of flats on Albert Embankment. The application is being made to Lambeth Council by Texaco who with a similar central London scheme have made provision for a fireproof spine to assist in evacuation during an emergency.

- A decision on the proposed Heron building in the City of London, which would change the skyline view from SE1, is expected shortly from the government following the public enquiry.
- Lambeth has released plans to build a new library and an employment centre on the old library site in Lower Marsh.

The Roupells of Lambeth

The life of William Roupell of Roupell Street fame will be revealed at lecture this month. Roupell was an MP who squandered the fortune of his father who had developed Waterloo's Roupell Street. The talk will be given by Judy Harris at Hawkstone Hall on Tuesday 26 February when copies of her book *The Roupells of Lambeth* will be available. See page 8 for details.



Glass box sends residents into Orbit

WORK HAS begun on demolishing Orbit House opposite Southwark Station to make way for Southpoint. The new building has been designed by Alsop & Stormer to look like a tipped up glass box with the front and back walls sloping backwards.

Earlier suggestions that the ground floor of the office block would have a supermarket have proved inaccurate. There is provision for just one retail unit described as coffee shop size.

Demolition should be completed by May in time for the building programme to begin in July. Completion is

scheduled for 2004. Residents in Scoresby Street, currently complaining about vibration from demolition work, will enjoy winter sun for the last time next year. The 11 storey building is also due to block panoramic views of St Paul's and the City from Nelson Square flats.

Orbit House was built on the site of a chapel building which later, as The Ring, became a famous venue used for boxing matches. The present building housed the India Office Library which has moved to the British Library building at St Pancras.

• www.southpoint-london.co.uk

A RE DER OFFER

Two-for-one at Southwark Cathedral's Long View of London interactive exhibition

page 2

This Month

page 2

What's on for Children in SE1 during the Half Term holiday

page 5

Review of Paul Klee at the Hayward Gallery

in SE1

27 Blackfriars Road
London SE1 8NYTEL 020 7633 0766
FAX 020 7401 2521

newsdesk@inSE1.co.uk

WEB www.inSE1.co.uk

© 2002 Bankside Press

EDITOR
Leigh HattsDESIGN & PRODUCTION
James HattsCONTRIBUTORS
Farouk Campbell
Anne Critchley
Crystal Lindsay
Adrienne Lynch
Marion MarplesPRINTED BY
Copyprints Ltd,
1 Talbot Yard, SE1 1YP

Advertising

For details of our competitive rates call us for a rate card on 020 7633 0766.

Subscriptions

To subscribe for 12 issues please send a cheque for £5 to the address above, made payable to in SE1.

Listings

Details of events to be considered for inclusion next month should be sent by 18 February to the Listings Editor at the above address, or by fax or email.

Please note

Every effort is made to ensure accuracy but all details are subject to alteration – no responsibility can be accepted for any inaccuracies.

South Bank Centre

We do not have space to list all events at the South Bank Centre. Full details can be found in the Centre's *Southbank* magazine and at www.sbc.org.uk

Next Month

- Mothering Sunday
- Easter events
- String of Pearls details
- Environment Watch
- Warhol review
- New SE1 radio station
- World Book Day
- Available from 28 February

Special Events

Borough Market

www.boroughmarket.org.uk

Friday 15 to Sunday 17 February
FEBRUARY FROST FAIRFri 12-6pm; Sat 9am-4pm; Sun 11am-4pm
Festival celebrating winter food and rare breed meat. Demonstrations & events including spit roasts of wild boar and beef and sausage linking competition. Saturday: Slow Food Workshop and Tasting of Rare Breed Meats. Sunday: Butchery and pie-making demonstrations.

St John's Waterloo

Waterloo Road T 020 8299 8732
www.dulwichpicturegallery.org.ukWednesday 6 and 13 February
ARTCLASSES6pm; free
Dulwich Picture Gallery is running more free art classes at St John's, Waterloo. Experiment with charcoal drawing, painting with acrylic, collage, ink and wash. All materials provided. Beginners welcome.

Pool of London

Wednesday 6 February
JUBILEE GUN SALUTE1pm
A 62 gun Royal salute fired from Tower Wharf by the Honourable Artillery Company to mark the 50th anniversary to the day of the Queen's Accession. Watch it live at www.livesights.com

Southwark Playhouse

62 Southwark Bridge Road
020 7652 2224Saturday 23 February
RIVER HERITAGE PROJECT LAUNCH2.30pm
Meet from 2pm on riverside path outside Tate Modern for Mudlarking sessions on Thames foreshore. The culmination will be a big exhibition in Docklands this summer. Supported by Thames 21 and Thames Explorer Trust. Wear wellies or borrow a pair on site. Contact at Playhouse: Kath Serkis.

Events for Children

Imperial War Museum

Lambeth Road T 020 7416 5439
www.iwm.org.uk
Daily 10am-6pm; freeSaturday 16 to Sunday 24 February
REACH FOR THE SKY
11am-3.30pm; free

Spying, attacking and defending, aircraft have changed the way wars are fought. Follow the trail, meet actors in the role of aviators and journey through the history of flight. An Aeroplane Week event. The Museum has on display a large variety of aircraft, from the delicate biplanes BE2 and Sopwith Camel of the First World War, to the Spitfire and Mustang of the Second World War. They and the other aircraft are the focal point for the week's activities.

Monday 18 to Friday 22 February
AERIAL CREATURES11am-3pm; free
If an aeroplane came to life what sort of creature would it be? Art activity in the Large Exhibits Gallery. No booking necessary.

Tate Modern

Bankside T 020 7887 8008
www.tate.org.uk
Sun-Thu 10am-6pm (Fri & Sat 10pm); freeEvery Sunday
START11am-1.30pm & 2.30-5pm; free
Activities for children aged five and over who can drop in with their adult friends or parents to explore art.Every Saturday
ARTMIXX11am; free (book on arrival)
Interactive tour of gallery with games, drawing and conversation. Age 5+.Sunday 17 February
TATE TALKS11am; free (book on arrival)
Playful introduction to gallery. Age 5+.

READER OFFER

Two-for-one at
Southwark Cathedral
Long View of London
interactive exhibition

THE LONG View of London – the interactive exhibition at Southwark Cathedral – is offering in SE1 readers a two-for-one combined ticket deal. The special ticket covers entry to The Long View of London and an audio tour of the Cathedral building itself. Buy one combined ticket, get a second of equal or lesser value for free! Normal ticket price: Adults £5.00, Seniors and students: £4.00, Children: £2.50. Offer valid until 17 March 2002 and available to all who bring in their copy of in SE1 with the offer printed in it.

Blackfriars
Wine Bar

The South Bank's best kept secret invites you to discover the charm of an authentic WINE BAR

We have an extensive range of over 100 different wines from the Old and New World

Luncheon and snacks available
Open 10am till late Monday to FridayARCH 80, SCORESBY STREET, SOUTHWARK
LONDON SE1 TEL: 020 7928 0905

3 mins from Southwark station • 5 mins from Tate Modern

Green Lanes Community Consultation Days

Help shape Your Area & comment on local needs,
Free refreshments!Bermondsey Village Hall, Kirby Grove,
off Snowsfields, Saturday 12.30-4.30pm 26th JanuaryTabard Community Hall, Hankey Place,
off Long Lane, Friday 3-7pm 1st FebruaryREPA Adventure, Dickens Square, off Harper Rd
Saturday 11am-4pm 23rd FebruaryRockingham Community Centre, Falmouth Rd
off Harper Rd, Wednesday 3-7pm 6th MarchFor further info please call 020 7252 6894
or Email greenlanesnet@hotmail.com

Are you a Food Business in SE1? Have you had a Hygiene visit lately?

We can subsidise local courses in: -

Basic Food Hygiene, Hazard Analysis, Refresher Food Hygiene

Cost only £10 per person, certificates provided

For more details, contact: -

LONDON'S LARDER
SMALL BUSINESS SERVICEAn Initiative of The Borough Market Partnership
"Helping businesses in Borough"Trustees of the Borough Market
8 Southwark Street, SE1 1TL
Tel: 020.7403.2238; Fax: 020.7403.2245
E: foodtraining@londonlarder.org.uk

WELLINGTONS

HEALTH CLUB & BEAUTY SALON

Get fit in 2002

Beauty – various massages and holistic treatment all for destressing and relaxation
Gym, dance and fitness classes together with assessment for all to stay healthy
Visit our dermalogica clinic
Gift vouchers
Beauty open to non members

www.wellingtonshealthclub.co.uk

info@wellingtonshealthclub.co.uk

Open to non-members

020 7401 8616

101 Lower Marsh • SE1 7AB

2 minutes from Waterloo Station

Thames bridges to feature on stamps

THE POST Office is issuing a stamp depicting the Millennium Bridge.

The special stamp will be released for sale on 10 September as part of a set of six stamps featuring five Thames river bridges in SE1.

Each stamp is in the style of the period in which the bridge was built. The designs will also be sold as postcards. The other crossings are: Westminster, Blackfriars, London and Tower Bridges.

•According to a Millennium Bridge spokesperson repair work is complete and the crossing will “open soon” if tests are successful.

Southwark goes to the polls

AS WE went to press the residents of SE1 were voting in the Mayoral Referendum.

The choice was between the present system of a traditional impartial mayor and an American-style directly elected mayor who would combine the role of council chair and leader. Most councillors and residents interviewed were opposed but with little campaigning funds available, no national or even London media interest and no opinion polls it has been impossible to forecast the outcome.

For the result, check the London SE1 website at www.london-SE1.co.uk.

Roman remains found in the Borough

A HUNDRED skeletons of men, women and children buried around 250 AD have been uncovered in Great Guildford Street.

The discovery confirms recent evidence that the Borough was a Roman suburb of Londinium on the north side of the river. The burial ground, which lies between Keppel Row and America Street, is due to be redeveloped by the investment bank Schroders.

Excavations are continuing until the end of this month and more details of finds are to be released shortly by AOC Archaeology Project Director Giles Dawkes.

SE1 Snippets

SOUTHWARK ATTACKS LAMBETH

Baroness Perry of Southwark has criticised the current procedure for choosing the next Archbishop of Canterbury. George Carey leaves SE1's Lambeth Palace in the autumn for retirement in Bristol. Lady Perry says that it is monstrous for the Prime Minister to be able to reject the nomination of the special appointments commission and have a say in who moves in next.

PLACES TO MEET IN SE1

SE1 has four of the 50 best places to meet in London according to *The Independent*. Unfortunately only the London Eye and Marie's Café in Lower Marsh qualify as a reliable rendezvous point. The Millennium Bridge is still closed and R. Cooke's pie and mash shop in The Cut has sadly just closed down due to family illness.

ST VALENTINE'S FLIGHT

A couple can have a romantic St Valentine's Day flight on the London Eye with champagne, chocolates and even strawberries served by a waiter during the trip. Each couple will also get a camera to record the romantic moments as well as the capital views. Booking is essential for the £325 trip. 0870 5000 600.
•www.ba-londoneye.com

CHANGING PUBS

Young's has taken over the Wheatsheaf in Borough Market and the Shakespeare Tavern on Southwark Street, is reopening on Thursday 15 February. However, the Spanish Patriot in Lower Marsh has re-opened without its familiar sign and is rebranded as Ruby Lounge. The Spanish Patriot was a unique name derived from the Peninsular War.



Give you the security and reliability you need from your courier service

- sameday
- overnight
- international
- newspaper back issues

Call 020 7735 5888 for an instant response



In Rehearsal at the National

LAST YEAR the National Theatre celebrated its 25th anniversary with an exhibition *In Rehearsal at the National*. This display of rehearsal photographs from 1976 is back this month by popular demand but the best souvenir is the exhibition book (Oberon; £12.99) which includes a complete chronology of plays presented at the NT. Over 400 productions have been seen in rehearsal through the eyes of leading theatre photographers and 200 black and white pictures highlight the career development of the great names. There are comments about the productions from the participants who include Brenda Blethyn, Simon Callow, Albert Finney, John Gielgud, Peter Hall, Felicity Kendal, Ralph Richardson, Zöe Wanamaker and many more familiar names. The book is compiled and edited by Lyn Hail who produces the theatre programmes. Trevor Nunn contributes the preface.

LEIGH HATTS

Learn to Rock 'n' Roll On TUESDAYS

to 40's, 50's, 60's music

7.30pm Complete Beginners Class
8.30pm Intermediate Class

Doors open 15 minutes before the class

£8/£5

Waterloo Action Centre
14a Baylis Road SE1 7AA
(entrance next to red phone box between Lower Marsh & Waterloo Rd)

More information:
Jean le Clerc 07944 775556

www.parisrockclub.com

Get a weekly email update on SE1 events

Sign up now at SE1direct.co.uk



Shakespeare's Globe 2002

SHAKESPEARE'S Globe season opens with *Twelfth Night* on Saturday 11 May. This will be a 400th anniversary celebration of the very first performance for Candlemas 1602 at the lawyers' hall in The Temple across the water. Artistic Director Mark Rylance says that all the clothing and music is being created from research into the original period. *A Midsummer Night's Dream* follows and in August there is also *The Golden Ass* by Peter Oswald, a new comedy written for the Globe, telling the story of a young man who, wishing to turn himself into a wise owl, takes the wrong drug and finds himself transformed into an ass. Booking opens on Wednesday 13 February.

- 020 7401 9919
- www.shakespeares-globe.org

LEIGH HATTS



Branching Out in The Cut

SMALL IS beautiful is an apt description of The Cut's new florist, Branching Out. The tiny shop is a blaze of colour on a cold winter's day. Owned and run by Mark Kenny and Derek Plowright, the shop's customers have already included the Young Vic, GMTV and Cherie Blair as well as local residents. Mark is the son of renowned florist Joan Kelly and has previously done work for members of the Royal Family and the EEC. Derek lives over the shop and deals with the marketing. This new venture certainly looks like being a winner. Many local people will feel relieved that here the onward march of coffee bars and restaurants in SE1 has been halted.

- Mon-Thu 9am-6.30pm (Fri 7.30pm); Sat 10am-4pm
- T 020 7207 2045

ANNE CRITCHLEY

Theatre

Royal National Theatre

South Bank
T 020 7452 3000
www.nationaltheatre.org.uk

Friday 8 February
PINTER SKETCHES I
Lyttelton Theatre; 6pm; £5 (conc £4)

A selection of sketches performed by an all-star cast

Monday 11 February
PINTER SKETCHES II
Lyttelton Theatre; 6pm; £5 (conc £4)

Another selection of Pinter's sketches with Henry Woolf joining the actors. Pinter again performs his latest sketch.

Monday 11 February to
Wednesday 3 April
SYRINGA TREE

Cottesloe Theatre; £10-£27; phone for dates
Moving story of love between two families, one black and the other white during the early 1960s in South Africa.

Saturday 23 February to
Saturday 20 April
TARTUFFE

Lyttelton Theatre; £10-£33; phone for dates
Martin Clunes plays Tartuffe, a religious hypocrite who has wormed his way into the once ordered household and vulnerable heart of the merchant Orgon.

From Thursday 28 February
HINTERLAND

Cottesloe Theatre; £10-£27; phone for dates
Reflects upon a notorious political career and returns an unexpected verdict.

Until Tuesday 5 February
THE GOOD HOPE

Cottesloe Theatre; from £13; phone for dates
Reset in the Yorkshire fishing community of Whitby in 1900.

Until Saturday 27 April
SOUTH PACIFIC

Olivier Theatre; from £10; phone for dates
Rogers and Hammerstein's hit.

Continuing in repertory
NO MAN'S LAND

Lyttelton Theatre; from £10; phone for dates
Harold Pinter's 1975 play

Greenwood Theatre

55 Weston Street
T 020 7848 2399

Wednesday 6 to Saturday 9
February
EURIPIDES' BACCHAE

£6 (conc £5); Wed-Fri 7.30pm (matinées Wed 2.30pm & Sat 5pm)
The Department of Classics at King's College presents Euripides' Bacchae in the original Greek.

Young Vic

66 The Cut
T 020 7928 6363
www.youngvic.org

New season opens on 7 March with Marlowe's *Dr Faustus*

Old Vic

The Cut/Waterloo Road
T 020 7369 1722
www.oldvictheatre.com

Until Saturday 13 April
THE ISLAND

Mon-Sat 7pm (matinée Sat 3pm); £5-£30
The acclaimed 1973 play now stars John Kani and Winston Ntshona. A story charting the lives of the men and women imprisoned for taking part with indomitable courage in the fight for a free and democratic South Africa in the notorious Robben Island Prison. A Market Theatre Johannesburg production.

St John's Waterloo

Waterloo Road
T 020 7633 9819
www.stjohnswaterloo.co.uk

Friday 1 & Saturday 2 February
ACTS

7.30pm; £8 (conc £5)
A return of the play in the mystery play tradition written by Charles Smith and based on the Acts of the Apostles.

Southwark Playhouse

62 Southwark Bridge Road
T 020 7620 3494
www.southwark-playhouse.co.uk

Until Friday 8 February
MA BETH

Mon-Fri 2pm; £5
Exciting re-working of Shakespeare's powerful play of corruption and ambition.

Saturday 2 February
PETRIFIED MAN & WHY I LIVE AT THE PO

7pm; free
Playreading of Eudora Welty's work directed and adapted by Ellie Rycroft.

Sunday 3 February
SLOW TRAIN TO IZMIR

7pm; free
Playreading of Mark Angus' work. Directed by Maggie Zolinsky.

Tuesday 12 February to Saturday 9 March
WHEN THE WIND BLOWS

Mon-Sat 7.30pm; £10 (conc £6; 12-14 Feb and Mon all seats £5)
Raymond Briggs' adaptation of his poignant and touching cartoon of Jim and Hilda Bloggs, an everyday couple holding on to each other in the face of global disaster.

Union Theatre

204 Union Street
T 020 7261 9876
www.uniontheatre.freeserve.co.uk

Until Saturday 2 February
CAMP

Tue-Sat 7.30pm; £9.50 (Conc £6.50)
Second in this year's *Union of Shorts* season

Tuesday 26 February to
Saturday 16 March
JACK DRUM'S ENTERTAINMENT

Mon-Sat 7.30pm; £8.50
World première of a play by award-winning Australian dramatist David Allen looking at life backstage at the Globe on Bankside in the 1590s. Both a political thriller and a love story.

Cinema

BFI London IMAX Cinema

The Bullring, South Bank
T 020 7902 1234
www.bfi.org.uk/imax

Due to the immense success of the previous After Dark season the number of performances has been increased. Please note that the films are not presented in IMAX format.

Friday 1 to Sunday 3 February
AFTER DARK: SOME LIKE IT HOT
Fri 9.15pm; Sat & Sun 8.45pm; £7.50 (conc £6.20)

Friday 8 to Sunday 10 February
AFTER DARK: TAXI DRIVER
Fri 9.30pm; Sat & Sun 8.45pm; £7.50 (conc £6.20)

Thursday 14 to Sunday 17 February
AFTER DARK: ROMEO & JULIET
Thu 8.15pm; Fri 9.15pm; Sat & Sun 8.45pm; £7.50 (conc £6.20)

Friday 22 to Sunday 24 February
AFTER DARK: PULP FICTION
8.45pm; £7.50 (conc £6.20)

Films in repertory for February
Call for screening times; £6.95 (child £4.95; conc £5.95)

BEAUTY AND THE BEAST
Disney's Beauty and the Beast is

bigger and better than ever as it makes its IMAX debut with all-new digitally remastered sound, enhanced and reanimated images, and a newly animated musical sequence, especially for the giant screen.

CYBERWORLD 3D
Meet your favourite characters as they leap out of the screen.

INTO THE DEEP (3D)
Takes you into a magical underwater world.

HAUNTED CASTLE
A 3D visual extravaganza with young musician Johnny on a musical mystery tour of a haunted castle.

SHACKLETON'S ANTARCTIC ADVENTURE
There is a small supporting exhibition of memorabilia and artifacts at the IMAX cinema.

National Film Theatre

South Bank
T 020 7928 3232.
www.bfi.org.uk/nft

ALAN CLARKE
A two-month season dedicated to the tv work of the uncompromising, often controversial director. This will be the most complete retrospective ever staged in the UK.

CALL in the YARD

Most of the big and successful local firms do when they have something to say and they would like us to give a sharp edge to it.

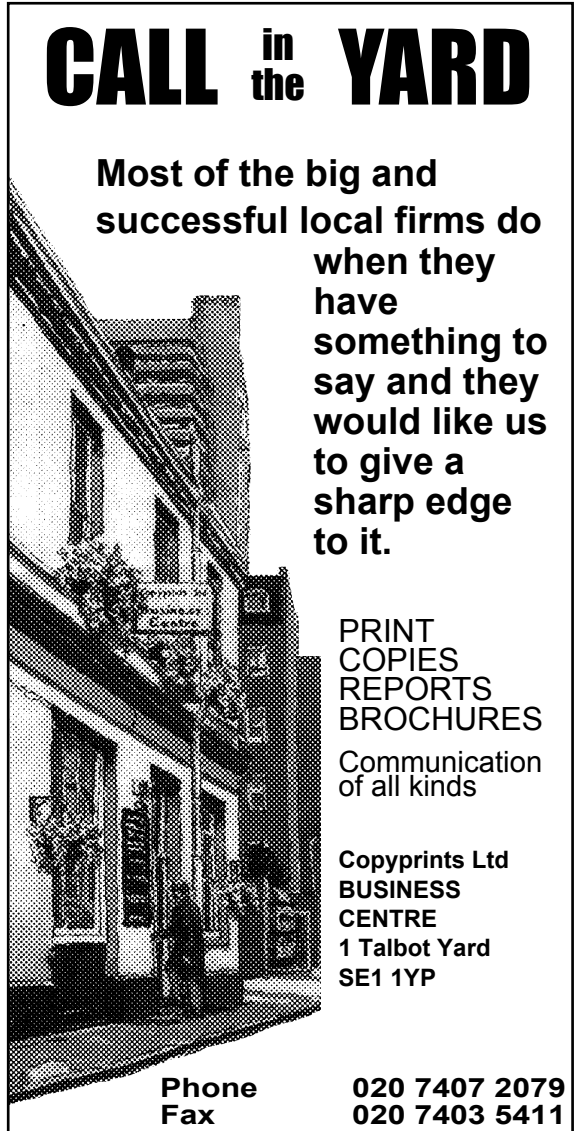
PRINT COPIES
REPORTS
BROCHURES

Communication of all kinds

Copyprints Ltd
BUSINESS CENTRE
1 Talbot Yard
SE1 1YP

Phone
Fax

020 7407 2079
020 7403 5411



Exhibitions

Bankside Gallery

48 Hopton Street T 020 7928 7521
Tue-Fri 10am-5pm (Tue 8pm) weekends 1pm-5pm; £3.50 (conc £2)

**Tuesday 5 to Sunday 10 February
CELEBRATION**

Watercolours by pupils from Friars and St Joseph's Primary Schools in SE1 created in a project organised by the Royal Watercolour Society.

**Friday 15 February to Sunday 10 March
MADE IN JAPAN**

Exploration of two-way nature of influences between East and West.

Design Museum

Shad Thames T 020 7940 8790
www.designmuseum.org
Daily 10am-6pm (last admission 5.15pm); £5.50 (conc £4)

**Until Sunday 24 February
CONRAN FOUNDATION COLLECTION 2001**

Marc Newson's £30,000 wish list.

**Friday 1 February to Sunday 16 June
RONAN & ERWAN BOURDULLEC**

Rising superstars of European design, these furniture designer brothers are known for the ingenuity of their kitchens, sofas and 'sleeping cabins'.

**Monday 11 February to Tuesday 9 April
ARNE JACOBSON: COCKTAILS WITH ARNE**

Showcase of stainless steel products of the 1950s and 60s designed by celebrated Danish architect Arne Jacobson.

**Until Sunday 21 April
WEB WIZARDS**

A window onto contemporary cultural design through New Media.

Essor Gallery

1 America Street T 020 7928 3388
www.essorgallery.com
Daily 11am-5.30pm; free

**Friday 8 February to Saturday 30 March
FIELD STUDIES**

Three artists from diverse backgrounds with similar preoccupations.

fa projects

Bear Gardens T 020 7928 3228
www.faprojects.com
Tue-Fri 10am-6pm; Sat 11am-4pm

**Until Saturday 23 February
DAVID BURROWS**

David Burrows' first UK solo show is a major mixed media installation in the main gallery space along with photographic representations of other fabricated scenes.

Hayward Gallery

South Bank T 020 7960 5226
www.hayward-gallery.org.uk
Daily 10am-6pm (Tue & Wed 8pm); £7 (conc £5)

**Until Monday 1 April
PAUL KLEE: THE NATURE OF CREATION**

See review on this page.

**Until Monday 1 April
WARTE MALIANN-SOFI SIDEN**

Video installation by the Swedish artist reflecting on the life of a prostitute.

Imperial War Museum

Lambeth Road T 020 7416 5320
www.iwm.org.uk
Daily 10am-6pm; free

**Until Sunday 28 April
SPANISH CIVIL WAR: DREAMS AND NIGHTMARES**

Impressive, comprehensive exhibition can now be seen free of charge since the abolition of admission charges in December.

Jerwood Space

171 Union Street T 020 7654 0171
www.jerwoodspace.co.uk
Mon-Fri 10am-6pm; Sat & Sun 12 noon-6pm; free

**Until Sunday 10 February
SEEN/UNSEEN**

Positive images from the developing world from the archive of Panos Pictures.

Lewellyn Alexander Fine Paintings

The Cut T 020 7620 1322
www.lewellynalexander.com
Mon-Sat 10am-7.30pm; free

**Until Saturday 16 February
MAUREEN JORDAN - FRASER KING**

Jordan's lustrous flower pastels contrast with King's watercolours of towns and cafe life.

**Thursday 21 February to Saturday 9 March
TESSA SPENCER PRYSE**

Vigorous oils of Provence, Tuscany and Venice. Also a Group Show.

McHardy Sculpture Company

Shad Thames T 020 7403 7555
www.mchardysculpture.com
Mon-Fri 11am-5pm; Sat & Sun 12 noon-5pm; free

**Friday 1 to Thursday 28 February
JILL BERELOWITZ, MAURICE BLK, MARGARET LOVELL & GILES PENNY**

New sculpture.

The Market

4 Bedale Street T 020 7378 0002
Wed-Sat 10.30am-5.30pm

**Until Thursday 28 February
ROLAND HICKS**

Photorealist paintings.

Morley Gallery

61 Westminster Bridge Road T 020 7450 9226
www.morleycollege.ac.uk
Mon-Fri 11am-6pm (Thu 7pm); Sat 12 noon-4pm; free

**Thursday 7 to Thursday 28 February
CHRIS COOKE**

An exhibition by the painter and installation artist Chris Cooke.

Museum of Garden History

Lambeth Palace Road T 020 7401 8865
www.museumgardenhistory.org
Daily 10.30am-5pm; free (donations)

**From Sunday 3 February
2002 SEASON**

The museum reopens after annual winter closure.

Percy Miller Gallery

39 Snowsfields T 020 72074578
www.percymillergallery.com
Tue-Fri 11am-6pm; Sat 11am-3pm; free

**Until Thursday 7 March
THE GREEN ROOM**

Eight London based artists, including Fiona Banner, Simon English and Simon Moretti.

Printspace

2 Bear Gardens T 020 7261 9066
www.print-space.com
Tue-Sun 11am-6pm; free

NEW CONTEMPORARY PRINTMAKERS

Season of solo shows by emerging printmakers.

**Until Wednesday 6 February
CAROLE HENSHER**

Thursday 7 to Wednesday 13 February

SARA LUDDY

Thursday 14 to Wednesday 20 February

KATHERINE JONES

Thursday 21 to Wednesday 27 February

BETH MEDLAND

Thursday 27 February to Wednesday 6 March

HO WUON-GEAN

Purdy Hicks Gallery

65 Hopton Street T 020 7401 9229
www.purdyhicks.com
Mon-Fri 10am-5.30pm (Wed 7pm); Sat & Sun 12 noon-5pm; free

Until Saturday 9 February

ANDRZEJ JACKOWSKI: FINDING OUR WAY

Paintings that seek to express the thoughts and feelings of the unconscious.

**Friday 15 February to Saturday 16 March
MICHAEL PORTER: A SENSE OF PLACE**

Revealing the abstract qualities of nature

Royal Festival Hall

South Bank T 020 7960 4242
www.rfh.org.uk
Mon-Sat 10am-9pm; free

Until Saturday 2 February

THE MUSICAL PAINTING: THE HIGH LLAMAS

Musical painting in the Festival Hall Foyer featuring images of the Waterloo area.

Until Sunday 3 March

MAN GAN AND BIFF OF POETRY REVIEW

Caricatures and cartoons poking gentle fun at the poetry scene. (In the Poetry Library)

Royal National Theatre

South Bank T 020 7452 3000
www.nationaltheatre.org.uk/exhibitions
Mon-Sat 10am-11pm; free

**Until Saturday 9 February
ANDRZEJ KLIMOWSKI**

Poster and book jacket designs using collage.

**Until Saturday 9 March
IN REHERSAL AT THE NATIONAL**

See Book Review on page 3.

Tate Modern

Bankside T 020 7887 8008
www.tate.org.uk
Sun-Thu 10am-6pm (Fri & Sat 10pm); free

**Thursday 7 February to Monday 1 April
WARHOL**

£10 (conc £8)
A major retrospective bringing together over 150 paintings, drawings and sculptures.

**Until Sunday 10 March
JUAN MUÑOZ: DOUBLE BIND**

An installation in the Turbine Hall

the.gallery@oxo

Oxo Tower Wharf T 020 7401 2255
www.oxotower.co.uk
Daily 11am-6pm; free

**Until Monday 4 February
SWORDS INTO PLOUGHSHARES**

Sculptures created by Mozambican artists from dismantled weapons.

**Thursday 7 to Sunday 17 February
1 in 4 - MENTAL HEALTH IN FRAME**

Photo-portraits of those who would like to be released from the stigma and discrimination associated with mental illness.

Tom Blau Gallery

Queen Elizabeth Street T 020 7378 1300
www.tomblaugallery.com
Mon-Fri 10am-6pm; Sat 12 noon-5pm

**Until Saturday 9 February
RUTH ORKIN A WOMAN OF THE WORLD**

Unforgettable images of New York, Europe, Hollywood and over a golden three decades.

The Walk Gallery

King Edward Walk T 020 7928 3786
www.walkgallery.com
Mon-Sat 11am-6pm (Thu 7pm); free

**Sunday 17 February to Saturday 9 March
THE LONDON GROUP**

An eclectic mix represented by Anthony Wishaw, Kate Montgomery, David Gluck and Peter Clossick.

**exhibition
review**



**Paul Klee
at the Hayward**

AN EXHIBITION subtitled 'The Nature of Creation' will speak directly to the painters of today and the co-curator, artist Bridget Riley, indeed acknowledges an inspirational debt to Paul Klee. His experience of taking a line 'for a walk' and seeing colour possessing him reveals his virtuosity in the exploration itself. A trained musician, he saw painting as having the freest abstract potential of all. We are shown it here in a multiplicity of fertile thoughts, drawn from a vast case of work. 'A defined today is over and done for' he told his students seventy years ago. See these images and you'll find the dew still on them.

- See listings on this page
 - www.hayward.org.uk/klee
- CRYSTAL LINDSAY

**audio
review**

**Stroll Back
in Time**

THE FIRST of a series of walks tapes called *A Stroll Back In Time* is Southwark's riverside from Tower Bridge to Blackfriars Bridge. The idea is that you walk through Southwark listening to the commentary which is available on both tape and CD. A resident who knows the riverside and streets well, but not the history quite so well, will be happy to just listen in bed! The best part is, surprisingly, the section on HMS *Belfast* where its place in World War II history is explained clearly with sound effects. At St Mary Overy Dock you hear the creak of the Golden Hinde on the high seas.

- £9.99 (CD or tape)
 - On sale at Heritage Centre at Hay's Galleria
 - www.astrollbackintime.com
- MATTHEW BROOKE



South Bank Alexander Centre

FROM A child's state of grace, the progression to adulthood is one long fall as far as posture is concerned. The Alexander Technique offers a way back. Peter Nobes at the South Bank Alexander Centre has, in his nine years as an Alexander teacher, come to appreciate that this so-called 'technique' can be quite transformational, bringing the individual back to an easeful state of purpose and poise. The fretful, 'end-gaining' pressures of a stressful life affect the body: free yourself from the tyranny of these mental habits and the movement towards a unified well-being can start to happen. Instead of mere reflex actions, one can learn, under a teacher's guiding hand, to respond naturally. Just watch how effortlessly a cat assesses what is relevant when change is in the air: the head is lifted, responds or relaxes; the body perfectly in waiting only to what is needed next. My own experience left me free-floating and aware then, of how cramped my mind is making my body; and vice versa, no doubt. Remember: the city may press in but just around you there's all the space and potential that you need.

- 27 Blackfriars Road
 - T 020 7928 6378
 - www.alexandertech.co.uk
- CRYSTAL LINDSAY

Abbeyfield

Rotherhithe Society
21-22 Smith Close
SE16 5PB

offers private accommodation within a very sheltered housing unit for elderly people who are reasonably fit but who no longer wish or feel able to live alone. Two meals are provided daily. Residents are welcome for long or short term stays to suit their own situations and the needs of their families, for example, for holidays.

More information phone
Brenda Crawley 020 7231 5946

Music

St John's Waterloo
Waterloo Road T 020 7366 9279
www.stjohnswaterloo.co.uk

Every Wednesday
LUNCHTIME CONCERTS
1.10pm; *donations welcome; coffee available*
Regular lunchtime series.
Wed 6: Maria Zacharidou (cello) & Makiko Fujimoto (piano)
Wed 13: Tal Weissman (piano)
Wed 20: Kate Kelly (flute)
Wed 27: Musicians from Trinity College of Music

Friday 8 February
TRINITY COLLEGE OF MUSIC SINFONIA
7.30pm; £8 (conc £6)
Conductors: Jacques Cohen and Jason Burcham. Momentum (Mark-Anthony Turnage), Cello Concerto No 1, Op 107 (Shostakovich) & Scheherazade (Rimsky-Korsakov). Find out more about Trinity College of Music at www.tcm.ac.uk

Sunday 10 February
THE CHAMBER ORCHESTRA
6.30pm; £7
Peter Stark conducts the Ernest Read Symphony Orchestra. Richard Wagner's Siegfried Idyll, Mendelssohn's piano concerto in G minor with soloist Harriet Stubbs and Beethoven's Symphony No 8. See www.erso.org.uk

Sunday 17 February
LONDON GAY SYMPHONY ORCHESTRA
7.30pm; £10 (conc £6) from 020 8341 7049
Conducted by Peter Crockford. Scheherazade (Rimsky-Korsakov) & Romeo & Juliet Suite (Prokofiev). See www.lgso.ndirect.co.uk for more information.

Saturday 23 February
WESTMINSTER PHILHARMONIC ORCHESTRA
7.30pm £9 (conc £5) £1 off if booked in advance on 020 8697 9450
Jonathan Butcher conducts Elgar/Payne Symphony no.3, Martinu Oboe Concerto, Finzi Interlude for oboe and strings and Walton: Hindemith Variations. Solo oboe: David Cowley.

St George-the-Martyr
Borough High Street T 020 7407 2796
www.stgeorgethemartyr.co.uk

Every Thursday
LUNCHTIME MUSIC
1pm; *free (retiring collection)*
Thu 7: Guildhall School of Music students
Thu 14: Trinity School of Music students
Thu 21: Guildhall School of Music students
Thu 28: Royal Academy of Music students

St George's RC Cathedral
Lambeth Road T 020 7928 5256
www.southwark-rc-cathedral.org.uk

Every Friday
LUNCHTIME RECITALS
1.05pm; *free*
Fri 1: GSMD Music Theatre Group
Fri 8: Royal Academy of Music musicians
Fri 15: No Recital
Fri 22: Jenny Taylor (flute) & Gemma Brady (clarinet)

Thursday 7 February
SERGEI DIUKACHEV
7.30pm; £5
The Russian concert pianist returns to give another recital.

Saturday 9 February
ORGAN RECITAL
1.05pm; *free*
Recital by St George's Cathedral organist Nick O'Neill

Southwark Cathedral
Montague Close T 020 7367 6700
www.dswark.org/cathedral

Wednesday 6 February
PHILHARMONIA CHORUS
8pm; £5-£15
Candlelight mass settings by Igor Stravinsky and Anton Bruckner sung by the Philharmonia Chorus conducted by Robert Dean. Also Trisagion for brass quintet by John Taverner. Tickets on the door or in advance from First Call 0870 840 1111.

Saturday 16 February
DANVILLE CHRISTIAN CHOIR
2pm

Special Church Services

Christ Church Southwark
27 Blackfriars Road T 020 7928 3970
www.christchurchsouthwark.org.uk

Every Wednesday
CELEBRATE
1.10pm
Informal worship.
Wed 6: **Helen Turner**
Wed 13: **Stefan Mickel**
Wed 20: **Rob Chipperfield**
Wed 27: **Mark Nicholson**

Wednesday 13 February
ASH WEDNESDAY EUCHARIST
7pm
Eucharist and imposition of ashes.

St John's Waterloo
Waterloo Road T 020 7366 9279
www.stjohnswaterloo.co.uk

Sunday 10 February
ALL-AGE SERVICE
10.30am

Wednesday 13 February
HOLY COMMUNION
12.30pm & 7pm
Ash Wednesday service marking the start of Lent.

Southwark Cathedral
Montague Close T 020 7367 6700
www.dswark.org/cathedral

Saturday 2 February
CANDLEMAS EVENSONG
4pm
The end of the Christmas season marking Baby Jesus being taken to the Temple.

Wednesday 13 February
ASH WEDNESDAY EUCHARIST
12.45pm

Friday 22 February
TAIZÉ VIGIL
8.15pm
Evening Prayer leading into a Lent Vigil around the Cross with brothers of the Taizé Community. (Song practice from 7.30pm.)

Morley College

Lifelong learning for adults in the London area

Try Something New – For Just One Day

10 Feb: Wuthering Heights (883), Films of Nazi Occupation (844), How to Write Comedy for Radio & Television (831), Tibetan Healing (1661), Writing for Self Discovery (832), **16 Feb:** Anytime, Anywhere Massage (677), Indian champissage (689), Improve Your Memory (2646), **23 Feb:** Buddhist Meditation (3631), Systematic Applied Kinesiology (673), detoxification (2685)

To enrol or obtain further information about these 1 day courses ring 020 7928 8501

Morley College, 61 Westminster Bridge Road, London SE1 7HT Tel 020 7928 8501 Fax: 020 7928 4074

General Email: enquiries@morleycollege.ac.uk Web: www.morleycollege.ac.uk

Morley College Ltd is a company limited by guarantee registered in England No. 2629936. Reg Charity No. 1928623



BANKSIDE TRADERS' ASSOCIATION DIRECTORY OF MEMBERS

View this directory online at www.inSE1.co.uk/bta

ARCHITECTS

Munro Associates

Unit 21 Riverside Workshops
28 Park Street
020 7403 3808

Dinwiddie Maclaren

Arthur's Mission, 30 Snowsfields
020 7403 6600

West & Partners

Isambard House, Weston Street
020 7403 1726

ART GALLERIES

Bankside Gallery

Bankside
020 7928 7521

Delfina

50 Bermondsey Street
020 7564 2400

SE1 Gallery (Workplace Art Consultancy)

64 Southwark Bridge Road
020 7401 9494

New City Gallery

65 Borough High Street, 020 7403 2387

RK Burt Gallery

57 Union Street
020 7407 6474

ATTRACTIONS

Borough Market

8 Southwark Street
020 7407 1002

Britain at War Experience

64-66 Tooley Street
020 7403 5104

Clink Prison Museum

1 Clink Street
020 7378 1558

Shakespeare's Globe

New Globe Walk
020 7401 9919

Golden Hinde

St Mary Overie Dock
020 7403 0123

Mayflower 1620 Guides

Lower Walk, Hays Galleria
020 8299 0470

Old Operating Theatre

9a St Thomas' Street
020 7955 4791

Southwark Festival

16 Winchester Walk
020 7403 7474

Southwark Playhouse

62 Southwark Bridge Road
020 7620 3494

Vinopolis

1 Bank End
020 7645 3700

BANKS

Barclays Bank

29 Borough High Street
020 7560 6000

HSBC

28 Borough High Street
020 7301 6000

BICYCLE SHOPS

On Your Bike

52-54 Tooley Street
020 7378 6669

CATERING

Alexander Catering

Riverside, 28 Park Street
020 7357 7304

Bloys Business Catering

15 Three Crown Square
020 7378 8182

Riva Catering

200 Borough High Street,
020 7407 0737

CHARTERED ACCOUNTANTS

Roland Klepzig & Co

42 Copperfield Street
020 7620 3005

CONSULTANTS

Corporate Citizenship

5/11 Lavington Street
020 7945 6130

Europoint Centre

5-11 Lavington Street
020 7945 6050

Safe Neighbourhoods Unit

16 Winchester Walk
020 7403 6050

Southwark Energy Agency

42 Braganza Street
020 7582 8155

DENTISTS

Dental Practice

82 Southwark Street
020 7928 1172

DESIGN

Haime & Butler Designers

Studio 9, The Leathermarket, Weston Street
020 7407 2141

Illustrate IT

78 Borough High Street,
020 7403 7556

Sears Davies Limited

25 Copperfield Street
020 7633 0939

ESTATE AGENTS

Field & Sons

54 Borough High Street
020 7407 1375

GL Hearn

5-7 Marshalsea Road
020 7450 4000

Spacia

26 Southwark Street
020 7645 3051

West & Partners

60 Weston Street
020 7403 1726

Williams Lynch

90 Bermondsey Street
020 7407 4100

EVENTS MANAGEMENT

First Protocol

182-194 Union Street
020 7787 5995

Glaziers Hall

9 Montague Close
020 7407 1812

FOOD (RETAIL)

Absolutely Starving

51 Tooley Street
020 7407 7417

De Gustibus

Southwark Street
020 7407 3625

Guidetti Fine Foods Ltd

Winchester Square
020 7378 7054

Neals Yard Dairy

6 Park Street
020 7645 3551

Otobeer

Borough Market
0870 901 2337

HOTELS

London Bridge Hotel

8/18 London Bridge Street
020 7855 2200

Tower Bridge Travel Inn Capital

159 Tower Bridge Road
020 7554 3423

IT

B2 Consulting

Unit 311 Bankside Lofts, 65 Hopton Street
07810 540470

Interactive Office Systems

228 Borough High Street
020 7407 2227

Visionet

16 Winchester Walk
020 7407 4424

Systems Ltd

G05 Blackfriars Foundry
156 Blackfriars Road
020 7721 7088

MANAGEMENT CONSULTANT

Anne Radford

Hopton Street
07000 077011

OPTICIANS

GF Barnes

153 Borough High St
020 7407 3267

Quinlan's Opticians

7 Bedale Street
020 7403 6179

PRINTING, DESIGN AND STATIONERY

Copyprints

1 Talbot Yard
020 7407 2079

Ontime Printing

37 Redcross Way
020 7403 5752

Hieroglyphics Design

54 Ayres Street
020 7787 3987

Thames Digital Reprographic

108 Weston Street
020 7357 6665

M Rules

49 Southwark Street
020 7357 8100

PUBS/BARS

Anchor Bankside

34 Park Street
020 7407 1577

George Inn

77 Borough High Street
020 7407 2056

Globe Tavern

Bedale Street
020 7407 0043

Lord Clyde

27 Clenham Street
020 7407 3397

Our Cellar

47-49 Borough High Street
020 7407 3451

Two Four Two

242 Blackfriars Road
020 7928 8689

White Hart

22 Great Suffolk Street
020 7928 8265

PUBLISHER

Bankside Press/in SE1

27 Blackfriars Road
020 7633 0766

RECRUITMENT

Sue Hill Recruitment

80 Borough High Street
020 7378 7068

RESTAURANTS/CAFES

Banana Store

1 Cathedral Street
020 7357 9795

Bankside Restaurant

32 Southwark Street
020 7633 0011

Bloys Cafe

164/180 Union Street
020 7620 3600

Champor-Champor

62 Weston Street
020 7403 4600

Feng Sushi

13 Stoney Street
020 7407 8744

Harpers

3 Southwark Street
020 7378 8683

The Island Cafe

1 Flat Iron Square
020 7407 2224

Konditor & Cook

10 Stoney Street
020 7407 5100

La Spezia

35 Railway Approach
020 7407 0277

My Tea Shop

23 Duke Street Hill
020 7407 2387

Riva

155 and 200 Borough High Street
020 7378 8788

Olley's Traditional Fish & Chips

101 Gt Suffolk Street
020 7407 1088

The Tall House

134 Southwark Street
020 7401 2929

SHOES

Carducci Shoes

13 Hays Galleria, Tooley Street
020 7357 6751

SOLICITORS

Anthony Gold Lehman and Muirhead

25 London Bridge Street
020 7940 4000

Bryan O'Connor & Co

18/20 Southwark Street
020 7407 2643

SURVEYORS

Edward Symmons

2 Southwark Street
020 7955 8454

TRAINING

Psychosynthesis and Education Trust

92-94 Tooley Street
020 7503 2100

TRAVEL

Baxter Hoare Travel

51 Borough High Street
020 7403 5566

VIDEO PRODUCTION

Video Art Bankside

Unit 4 La Gare, 53 Surrey Row,
020 7620 1087

WINE MERCHANTS

London Bridge Cellars

151 Borough High Street
020 7407 1484

Morris & Verdin

Unit 2 Bankside Industrial Estate, Sumner St
020 7921 5300

Newsvines

164-166 Great Suffolk Street
020 7403 1252

Bankside Traders' Association

16 Winchester Walk, SE1 9AQ

Tel/fax: 020 7407 8830

Email: banksidetraders@btconnect.com

This month's directory is sponsored by

londonSE1

www.London-SE1.co.uk

MORE NEWS

There's news updated through the month at London-SE1.co.uk. Here's some of January's news:

- Holocaust Memorial
- New boss at the National
- Conran hits out at roadworks
- Christ Church Garden
- County Hall in advertising
- South Bank Centre in chaos
- Plans for children's theatre
- Millennium Bridge to reopen
- Tall buildings for Waterloo?
- Big plans for Old Vic
- £200,000 raid in Waterloo

London-SE1.co.uk

Branching Out 35 The Cut new florist

Don't forget
St Valentine's Day!
Thursday 14 February

9am-6.30pm
(Fri 7.30pm)
Saturday 10am-4pm

020 7207 2045
branchingoutfd@aol.com

SOUTHWARK CATHEDRAL



Philharmonia Chorus
with
The Wallace Collection
candle-lit
Wednesday 6 February
at 8pm

IGOR STRAVINSKY
Mass

JOHN TAVERNER
Trisagion (for Brass Quintet)

ANTON BRUCKNER
Mass No 2 in e minor

conducted by ROBERT DEAN

Tickets
Unreserved within each area
£15, £12, £9 (restricted view), £5 (no
view)

24 hour credit card booking
0870 840 1111 (£1.50 admin fee)

COPYPRINTS BUSINESS CENTRE

LONDON BRIDGE
HAS

OFFICE
SPACE
150 sq ft
TO LET

Contact John Wheeler
sales@copyprintsttd.co.uk

020 7407 2079

Talks, Lectures, Meetings

Calder Bookshop

51 The Cut T 020 7633 0599
www.calderpublications.com

Thursday 7 February

ART MATTERS

6.30pm; £3 (conc £1)

This is the title of John Tusa's important book in which he affirms that art is for everyone. Tonight he discusses it with Sir John Drummond whose own autobiography is out in paperback. John Tusa now runs the Barbican Centre. Drummond has been Controller of Radio 3, Director of The Proms and Director of the Edinburgh Festival, and was once described as "the fastest tongue in the west". Both will discuss exactly why 'Art Matters'.

Thursday 14 February

POETRY CIRCUS 3

6.30pm; £3 (conc £1)

John Cairney and Leonard Fenton conduct a third evening of poetry and fun. The audience will be invited to participate in reading and discussing diverse poems with tonight "an emphasis on love poetry as a mark of respect for St Valentine".

Thursday 21 February

PLAYS OF OLWEN WYMARK

6.30pm; £3 (conc £1)

As one of Britain's most innovative playwrights, Olwen Wymark's plays have been compared to those of Beckett, Pinter and Pirandello. She writes intense psychological dramas about human relationships and the games we play in life. Wymark discusses her work and with actor Sean Barrett reads extracts.

Thursday 28 February

PURSUIT

6.30pm; £3 (conc £1)

John Calder discusses frankly his long awaited memoirs. Anecdotes about Bertrand Russell, Alger Hiss, Graham Greene, J.B. Priestley, Jo Grimond and dozens of others whom the author encountered in his activities in and outside of publishing.

Design Museum

Shad Thames T 020 7940 8790
www.designmuseum.org
Daily 10am-6pm (last admission 5.15pm);
£5.50 (conc £4)

Monday 18 February

RICHARD SEYMOUR

7.15pm; £8

Richard Seymour, co-inventor of the cordless kettle and wire-free Bioform bra, discusses the challenges facing designers.

Queen Elizabeth Hall

South Bank Centre T 020 7921 0600
www.rfh.org.uk

Monday 18 February

DORIS LESSING

7.30pm; £8 (conc £5.50)

Lessing discusses her work with Hermione Lee.

Purcell Room

South Bank T 020 7960 4242
www.rfh.org.uk

Monday 4 February

HOW IT ALL BEGAN

6.15pm; £7.50

The story of the National Trust is the first in a series of National Trust lectures. This one should feature co-founder Octavia Hill who was responsible for the Model Church Commissioners housing behind The Cut and the cottages in Redcross Way.

Southwark & Lambeth Archaeological Society

Hawkstone Hall, Kennington Road

Tuesday 26 February

THE ROUPELLS OF LAMBETH

7.30pm (refreshments from 7pm); £1

Judy Harris, author of a new book on William Roupell of Roupell Street, talks about the controversial local 19th-century MP who went to jail. Residents of Roupell Street are especially welcome. Copies will be available.

South Bank Christian Studies Centre

St John's Waterloo T 020 7928 2259
www.southbankchristian.org.uk

Tuesdays 19 & 26 February

BODY & SPIRIT

6.30pm; £2.50 (£6 for series)

The first two of three lectures called 'Body and Spirit: life in a New Testament Church' by Dr Eddie Adams of King's College, London, exploring the social world and life of the church in Corinth in the light of his current research. Refreshments from 6pm.

Tate Modern

Bankside T 020 7887 8008
www.tate.org.uk
Sun-Thu 10am-6pm (Fri & Sat 10pm); free

Friday 8 February

WHO WAS SANDY WARHOL?

6.30pm; free

An event to coincide with the Warhol exhibition. Discussion about the controversial artist led by art critic Jonathan Jones and Senior Tate Curator Donna de Salvo.

Friday 15 February

DAVID SYLVESTER

6.30pm; free

Friends of the late David Sylvester join Tate Director Nicholas Serota to speak about his achievements. Sylvester, who died last year, has been described as "one of the most prominent exhibition makers and writers of the last 50 years". The exhibition *Looking at Modern Art: In memory of David Sylvester* continues on Level 5 at Tate Modern until Sunday 24 March.

Wednesday 20 February

NIGHT WAVES: UNDERCURRENTS

6.30pm; free

Richard Coles and Isabel Hilton present the first of a new series of topical monthly discussions. Recorded for broadcast on Radio 3 at 9.30pm.

Guided Walks & Tours

Streets of London

www.thestreetsoflondon.com T 07812 501418

Every Monday

THE CITY'S PLAYGROUND

Meet at Monument station at 2.30pm; £5 (conc £4)

Cross over London Bridge to the see what was once the City's seedy playground, home to many taverns, gambling dens, brothels, bear baiting pits and theatres.

Stepping Out

www.walklon.direct.co.uk T 020 8881 2933

Every Sunday

BROTHELS, BISHOPS & THE BARD

Meet 11am at Monument Station; £5 (conc £4)

Exploration of historic Bankside where there were brothels in the 14th and 15th centuries as well as the Bishop of Winchester's residence and parkland. It was in the park that William Shakespeare visited theatres and co-operated in renting ground for the wooden Globe Theatre.

Historical Walks of London

T 020 8668 4019

Every Sunday

THE LONDON OF DICKENS & SHAKESPEARE

Meet at Blackfriars Station at 11am; £5 (conc £4)

Discover the alleys, lanes and medieval ruins of buildings known to William Shakespeare and later Charles Dickens.

The Lambeth Walk

T 020 7435 4782

Every Tuesday

THE LAMBETH WALK

Meet 11am at Lambeth North Station; £5 (conc £4)

Tour of original Lambeth. See the sites of a circus, madhouse, workhouse and gardens.

Join the fun for older people at Blackfriars Settlement

Saturday Evening Club 6-9pm

- Board games
- Pool
- Reminiscences
- Music & dance
- Refreshments
- 50p

Sunday Lunch Club 11-4pm

- Computers
- Gentle exercise
- Games
- Arts & crafts
- Sunday lunch
- Transport if mobility problems
- £1.50

1-5 Rushworth Street SE1
020 7928 9521

RESIDENTIAL SALES RESIDENTIAL LETTINGS PROPERTY MANAGEMENT DEVELOPMENTS

London Bridge, Borough, Bermondsey, Tower Bridge,
Bankside, Waterloo, Elephant & Castle, Vauxhall,
Walworth, SE1, SE11, SE17, SW8

If you own a property in any of these areas and are
considering selling or letting, please call us to arrange a
free no obligation appraisal

OLIVER JAQUES

42 Borough High Street
London Bridge
London SE1 1XW
Tel: 020 7407 3322
Fax: 020 7407 4907
email: londonbridge@o-j.co.uk
Web Site: www.o-j.co.uk