

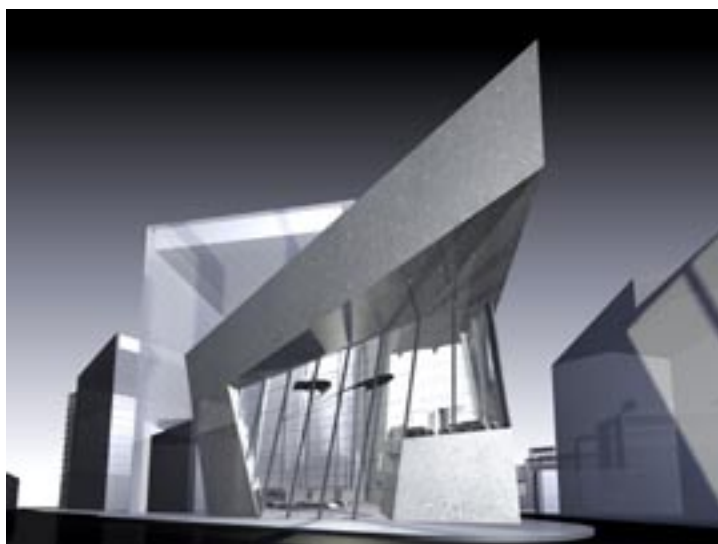
February 2005

in SE1

Issue 80

FREE

Zaha Hadid to design Southwark Street Centre for Architecture



Baghdad-born Zaha Hadid has won the international competition to design the Architecture Foundation's new centre for architecture to be built in Southwark Street.

Tate director Sir Nicholas Serota announced the winning design at an event at The Ragged School in Union Street last month.

The foundation says that the new centre for architecture will be a place of energy, creative ideas and activity where the public can engage with the best contemporary architecture. Due to open in 2006 on the corner of Southwark Street and Great Guildford Street, the building will be the new home of the Architecture Foundation and will house exhibition space, events space, offices and a bar.

The building and the competition to design

it have been made possible with sponsorship from Land Securities, the company behind the Bankside123 development being constructed on the former St Christopher House site.

The building, formed by a solid concrete ribbon wrapped around a full height glazed space at its centre, combines an emphatic presence and form with visual permeability and public accessibility, says the Architecture Foundation.

The new centre for architecture is set to be the first built project in London for the much acclaimed, London-based Hadid. Born in Baghdad and educated at the Architectural Association, Hadid's contribution to architecture was recognised in 2004 when she became the first woman to win the Pritzker Prize.

• www.architecturefoundation.org.uk

STEEL & SHAMASH

THE WATERLOO COMMUNITY SOLICITORS

We can help with all your legal problems

- Property
- Family
- Children
- Housing
- Criminal

For a friendly professional service
Only two minutes from Waterloo Station

Contact Steel & Shamash
12 Baylis Road • Waterloo • London • SE1 7AA
Tel: 020 7803 3999
Email: mail@steelandshamash.co.uk

Tate Modern reveals major expansion plans

Almost five years since it opened in the former Bankside Power Station, Tate Modern has announced a £135 million plan to expand into the electricity substation on the south side of the building.

Architects Herzog and de Meuron - responsible for the original conversion of the power station into an art gallery - will design the new spaces, which will take till 2012 to complete.

Tate director Sir Nicholas Serota said: "This is completing our original vision. I think the most significant development will be that Tate Modern will no longer simply have a single face to the north looking over the Thames - it will gain a totally new face looking south into Southwark and south London."

Sir Nicholas added that "...with the pace of property development in the area, we need to establish what part Tate Modern will play in the future landscape of Southwark."

• www.tate.org.uk/modern

FRANK HARRIS

and COMPANY

RESIDENTIAL SALES, LETTINGS and MANAGEMENT

57 York Road, South Bank, London SE1 7NJ

020 7620 3400

www.frankharris.co.uk



This Month

page 8

Saatchi Gallery
Triumph of
Painting

page 8

New Mary
Wollstonecraft
biography

The free monthly guide to what's happening in SE1

www.inSE1.co.uk

February 2005 in SE1

27 Blackfriars Road
London SE1 8NYTEL 020 7633 0766
FAX 020 7401 2521EMAIL newsdesk@inSE1.co.uk
WEB www.inSE1.co.uk

© 2005 Bankside Press

EDITOR
Leigh HattsPRODUCTION EDITOR
James HattsCONTRIBUTORS
Crystal Lindsay
Marion Marples
Elizabeth Peasley
Paul Russell
Sarah WeedPRINTED BY
Copyprints LtdDISTRIBUTED BY
Bigvan.com

ADVERTISING

For details of our competitive rates call us for a rate card on 020 7633 0766 or email sales@inSE1.co.uk

SUBSCRIPTIONS

To receive the next 12 issues by post in the UK please send a cheque for £6 to the address above, made payable to 'in SE1'. Please specify starting issue.

LISTINGS

Details of events to be considered for inclusion next month should be sent by 21 February to the Listings Editor at the above address, or by fax or email.

DISCLAIMER

Every effort is made to ensure the accuracy of our listings and features but all details are subject to alteration by venues and organisers and no responsibility can be accepted for any inaccuracies.

ENVIRONMENT NEWS

Southwark's 'open air sitting room' to be restored

A celebration was held in Red Cross Garden last month to mark the start of work on the restoration-in-spirit of Red Cross Garden, a green oasis originally laid out by in 1888 by Octavia Hill.

Lottery funding of £514,500 has enabled Bankside Open Spaces Trust to develop and implement plans to restore the original layout of this Victorian garden in Redcross Way for the enjoyment of visitors. These plans include the recreation of the pond with its rustic bridge, new flower beds, lawns and benches, and a small information centre and gardener's office.

Originally laid out in 1888 by National Trust founder Octavia Hill on the site of a derelict paper factory, the garden was described as 'an open air sitting room' for the people of Southwark. It was the setting for the annual Southwark Flower Show and many fetes and concerts in its heyday.

The work is due to be completed in June.

BUSINESS NEWS

Bankside businesses say yes to Business Improvement District

Bankside businesses have voted in favour of a Business Improvement District (BID) which will provide investment in the area funded by a 2 per cent levy on business rates.

The Better Bankside BID received 75 per cent of the votes cast representing over 66 per cent of the ratable value of the businesses that voted. Companies and enterprises in Bankside have been voting on whether to proceed with a formal BID since 14 December.

Better Bankside has operated for the past four years as a pilot programme and forms part of the Circle Initiative – a group of

five central London BID pilots.

Better Bankside has already spent £750,000 of SRB and match funding in the Bankside area. The yes vote will now formalise the BID and allow it to charge a 2 per cent levy on business rates which, topped up from public and private sources, will finance the continuation of these improvements.

Circle Waterloo is a pilot BID operating in the Waterloo area, and the Pool of London Partnership is considering a BID as a means of sustaining investment in the area when the partnership's funding comes to an end.

CALL in the YARD

Most of the big and successful local firms do when they have something to say and they would like us to give a sharp edge to it.

PRINT
COPIES
REPORTS
BROCHURES

Communication
of all kinds

Copyprints Ltd
BUSINESS CENTRE
1 Talbot Yard
SE1 1YP

www.copyprintsltd.co.uk

Phone
Fax

020 7407 2079
020 7403 5411

Blackfriars
Wine Bar

The South Bank's best kept secret invites you to discover the charm of an *authentic* WINE BAR

We have an extensive range of over 100 different wines from the Old and New World

Luncheon and snacks available
Open 10am till late Monday to Friday
ARCH 80, SCORESBY STREET, SOUTHWARK
LONDON SE1 TEL: 020 7928 0905

3 mins from Southwark station • 5 mins from Tate Modern

February

what's on guide

essential 4-page pullout guide to what's happening

Special Events

Imperial War Museum
Lambeth Road T 020 7416 5320
www.iwm.org.uk

Saturday 26 and Sunday 27 February
VOICES: ORDINARY PEOPLE, EXTRAORDINARY TIMES
11.30am & 2.30pm; free
A chance to meet veterans from the Second World War and other conflicts.

Rose Theatre Exhibition
56 Park Street
www.rosetheatre.org.uk

Saturday 5 February
OPEN DAY
11am-5pm; free (donations welcome)
A chance to see the remains of Bankside's first theatre.

Tower Bridge Exhibition
Tower Bridge T 020 7403 3761
www.towerbridge.org.uk

Monday 14 February
TOWER BRIDGE WALKWAYS VALENTINE'S NIGHT OPENING
5pm-10pm; £8 per couple
On reaching the top of the North Tower you will both receive a glass of fizz to enjoy whilst admiring the panoramic views.

Children

Design Museum
28 Shad Thames T 0870 833 9955
www.designmuseum.org

Every Weekend
DESIGN A LONDON 2012 OLYMPIC STADIUM
2pm-5pm; £6 (child £4)
Olympic-themed children's workshop. With a little help from real architects, children can have a go at designing and making models of their own Olympic stadia with media centres, athletics tracks and swimming pools. Workshops suitable for 6-12 year olds. Booking on 020 7940 8782 essential.

Florence Nightingale Museum
St Thomas' Hospital T 020 7620 0374
www.florence-nightingale.co.uk
Mon-Fri 10am-5pm; weekend 10am-4.30pm; £5.80 (conc £4.20)

Saturday 12 & Sunday 13 February
SCULPTURE WORKSHOP
12-3pm
Design your own memorial to Florence and make an animal sculpture of one of her beloved pets.

Monday 14 February
VALENTINE CARDS
10.30am-1pm
Florence had many admirers. Make your own Victorian style Valentine's card for someone you admire. Drop in workshop.

Tuesday 15 & Thursday 17 February
MEET FLORENCE
10.30am-1pm
Meet Miss Nightingale in person and ask her how she felt about her fame and achievements.

Wednesday 16 February
STUNNING SILHOUETTES
10.30am-1pm
Silhouettes were a popular way of recording images of famous people and your loved ones. Make a silhouette of a member of your family to take home. Drop in workshop.

Friday 18 February
MAKE A LAMP
10.30am-1pm
Florence is still remembered as the lady with the lamp. Make your own dazzling example to brighten your day. Drop in workshop.

Saturday 19 February & Sunday 20 February
TRAILS
10.30am-4.30pm
Children's trails and prizes all day.

Golden Hinde
St Mary Overie Dock T 020 7403 0123
www.goldenhinde.co.uk

Monday 14 & Friday 18 February
STORYTELLING ON THE GOLDEN HINDE
12 noon, 1.30pm & 3pm; £3.50; £10 (child £2.50)

Tall tales on the high seas bringing the story of Sir Francis Drake's famous voyage to life in an hour-long interactive tour. For 6-12 year olds. Children must be accompanied by one adult

HMS Belfast
Morgan's Lane T 0207 940 6300
hmsbelfast.iwm.org.uk

Saturday 12 to Sunday 20 February
MEDAL MAKING
10am-5pm; £7 (conc £5; child free with adult)
HMS Belfast served the Royal Navy throughout the Second World War, playing a leading role in the destruction of the battle cruiser Scharnhorst and the Normandy landings. The medal making workshop teaches children to make decorations fit for the heroes of these great battles. Free entry for children with one paying adult.

Imperial War Museum
Lambeth Road T 020 7416 5320
www.iwm.org.uk

Saturday 5 & Sunday 6 February
IN THEIR SHOES
11.30am & 2.30pm; free
A chance to handle and learn about artefacts from the First and Second World Wars. For children under 16 who must be supervised by an adult.

Sunday 12 to Sunday 20 February
CHICKEN RUN
11am-4pm; free
Free drop-in art event linked to the popular Chicken Run film characters, created by Aardman Animation and featured in the Great Escapes exhibition. No booking required. All materials provided. For children under 16 who must be supervised by an adult.

Morley College
Westminster Bridge Road T 020 7450 1889
www.morleycollege.ac.uk

Saturday 19 February
PLAYING IN THE WIND
10.30am; £4 (child £1)
Lyra Greek Dancers at this month's family concert. Very young children welcome.

National Film Theatre
South Bank T 020 7928 3232
www.bfi.org.uk/nft

Wednesday 16 February
MOVIE MAGIC WORKSHOP: 3D ANIMATION
1.30pm in the NFT Study Rooms; £1
Make your own Wallace and Gromit-style animation for ages 7 to 12.

Thursday 17 February
MOVIE MAGIC WORKSHOP: BUILD A FILM
1pm in the NFT Study Rooms; £1
Find out about film language and re-create a scene from Someone Like Hodder, for ages 7 to 12.

Royal Festival Hall
South Bank T 020 7921 0600
www.rfh.org.uk

Saturday 12, Friday 18, Saturday 19, Saturday 26 February
FREE STORYTELLING SESSIONS
10.30am in the Imaginarium in the Ballroom; free (booking essential)

Tuesday 15 to Thursday 17 February
IMAGINE 2005
Children's literature festival featuring John Agard, Valerie Bloom, Michael Rosen, Jacqueline Wilson, Anthony Browne, Ian McMillan and Jan Blake.

Tower Bridge Exhibition
Tower Bridge T 020 7403 3761
www.towerbridge.org.uk

Monday 14 to Friday 18 & Monday 21 to Friday 25 February
THE GREAT DEBATE
Daily 9.30am-6pm (last admission 5pm); £5.50 (child £3; conc £4.25)
Experience the discussions when plans were introduced to build Tower Bridge across the Pool of London. Costumed actors entertain young and old.

Talks & Meetings

Bankside Residents Forum
sue@banksideresidentsforum.org T 020 7928 9528

Thursday 3 February
OPEN FORUM MEETING
8pm-10pm in the Balcony Room, Bankside House, Summer Street
Guest speakers include Simon Hughes MP, John East, director of planning at Southwark Council and Cllr Richard Porter, executive member for regeneration. There will be updates and discussions on the Business Improvement District for Bankside, planning gain money for the community and the new strategy, the Tall Building Policy for Bankside, the Southwark Unitary Development Plan and the next steps and a planning application update for Bankside.

Calder Bookshop
51 The Cut T 020 7620 2900
www.calderpublications.com

Thursday 3 February
PETER MARINKER READS BECKETT
6.45pm; £4 (conc £2)
Beckett's potent theatrical text Piece of Monologue is here given a workshop performance prior to its inclusion in the Godot Company's spring repertoire. Other short Beckett texts will complete the evening's entertainment.

Thursday 10 February
THE SQUARE BY MARGUERITE DURAS
6.45pm; £4 (conc £2)
Perhaps her most poignant drama, The Square by Marguerite Duras features two lonely people who meet in a public park, begin to talk and find an echo of their own problems in those of the other. Virginia Byron and Alex McConnell read the play in a shortened version.

Thursday 17 February
STANLEY GONTARSKI ON BECKETT
6.45pm; £4 (conc £2)
The author of many books on Samuel Beckett, a renowned lecturer and occasional theatre director, Stanley Gontarski will talk about his experiences with the work of Beckett.

Thursday 24 February
ROY CAMPBELL'S BAUDELAIRE
6.45pm; £4 (conc £2)
Roy Campbell (1901-1957) was a poet, political activist and bull-fighter, but also one of the finest translators of French and Spanish of his time. Two actors from the Godot Company will read his unsurpassed translations from Baudelaire's Fleurs de Mal.

Design Museum
Shad Thames T 020 7940 8783
www.designmuseum.org

Tuesday 22 February
MATTHEW CARTER
7.15pm; £10 (conc £6)
Typography designer Matthew Carter

talks about his work for The Guardian, New York Times and Microsoft.

Feminist Library
5 Westminster Bridge Road T 020 7928 7789
www.feministlibrary.org.uk

Monday 7 February
WRITING WORKSHOP WITH ZOE FAIRBAIRNS
10am-4pm; £5-10, depending on income; booking essential
Budding and experienced short story writers alike are invited to join a creative writing workshop led by experienced author and journalist Zoe Fairbairns. www.zoefairbairns.co.uk

Southwark & Lambeth Archaeological Society
Community Room, 106 The Cut

Tuesday 8 February
ROCKETS, RAINS AND ROMAN CANDLES
7.30pm (refreshments from 7pm); £1
Talk by Gerry Moss.

Southwark Community Councils
www.southwark.gov.uk

Thursday 10 February
BERMONDSEY COMMUNITY COUNCIL
7pm at Aylwin Girls' School, 55 Southwark Park Road, SE16
Meeting for residents of Grange, Riverside and South Bermondsey wards.

Monday 28 February
BOROUGH & BANKSIDE COMMUNITY COUNCIL
7pm at Charles Dickens School, Lant Street
Meeting for residents of Cathedrals and Chaucer wards. Agenda includes recycling in Borough.

Vinopolis
Bank End T 0870 241 4040
www.vinopolis.co.uk

Sunday 20 February
INTRODUCTION TO WINE WITH SUZY ATKINS
12pm and 3pm; £30
An exclusive introduction to wine with award winning wine writer and broadcaster, Susy Atkins. Susy will guide guests through the smells, tastes and sights of six wines from around the world.

Waterloo Library
114-118 Lower Marsh T 020 7926 6076
www.lambeth.gov.uk

Monday 21 February
THIRD MONDAY READING GROUP
1.05pm
Anna Robinson, Lambeth's local history librarian leads a discussion on the book of the month. February's book will be Hilda Kean's London Stories..

West Bermondsey Community Forum
wbforum@tiscali.co.uk T 020 7403 9683

Tuesday 1 February
OPEN FORUM
7pm-9pm at Into Southwark, 5-13 Trinity Street

WBCF's first meeting of the year will feature presentations by Into Southwark on free websites, events listings services and computer training courses. Have your say on what you'd like to see on the WBCF website. Southwark Credit Union will present their banking, savings and lending services. Updates and discussions on the Willowbrook Centre, planning applications and other news. Details of the WBCF Spring Festival on 24 March.

Guided Walks

International Tourist Guide Day
www.blue-badge-guides.com

Saturday 19 February
INTERNATIONAL TOURIST GUIDE DAY
An annual event celebrated by some fifty professional tourist guide associations around the world. On ITG Day residents and visitors are invited to experience the work of professional tourist guides - for free.

PICASSO'S BLUE PERIOD AND BEYOND

Meet 10.30am or 2pm South end of Millennium Bridge
A guided tour of International Art in the Tate Modern. Blue Badge Guide: Jon Blanchard.

LITTLE BOY BLUE...

Meet 10.30am at Duke Street Hill exit of London Bridge Station.
The City of London's story with a little help from nursery rhymes. From London Bridge to Mother Goose: real events, real people; find out more. Blue Badge Guide: Eileen Cox

WAR & PEACE

Meet 11am outside the museum
Explore the Imperial War Museum, its galleries and the people who made a difference. Blue Badge Guide: Sean Simpson.

POTTERY, PRINCES AND POLITICS... SURPRISES SOUTH OF THE RIVER

Meet 1.30pm at the corner of Lambeth Bridge and Albert Embankment
This walk shows the enormous variety and diversity to be found in London. Blue Badge Guide: Liz du Parc.

BEAR BAITING, BROTHELS, THEATRES AND BREWERIES

Meet 2pm at Duke Street Hill exit of London Bridge tube
Explore colourful Southwark, haunt of rogues & vagabonds since Shakespeare's day. Blue Badge Guide: John Ashton.

Live Music**Everyone Deserves Music**

Southwark Rooms, 60 Southwark Street
www.everyonedeservesmusic.co.uk

**Friday 11 February
YOU BRING THE LOVE**

9pm-2am; £5
DIY DJ night Everyone Deserves Music returns for 2005 with a Valentine's warm-up, You Bring the Love. Aspiring DJs are

asked to turn up with their favourite love songs and make the crowd go weak at the knees with a 15-minute DJ slot. As usual EDM welcomes music from all genres, aiming for an anything-goes atmosphere where the people decide what the night will sound like. You don't have to play if you don't want to - just turn up and enjoy the unique EDM atmosphere and a diverse range of tunes chosen by the crowd. Everyone Deserves Music includes live percussion and visuals and other one-off surprises.

Morley College

Westminster Bridge Road
www.mfy.org.uk

**Monday 28 February to Friday 4 March
MUSIC FOR YOUTH**

From 10am; free
Every kind of musical ensemble from orchestras to duos, from jazz and folk groups to samba bands and steel pans, as well as choirs, chamber groups, brass and wind bands enter this first stage of the National Festival of Music for Youth.

St George's RC Cathedral

Lambeth Road T 020 7928 5256
www.southwark-rc-cathedral.org.uk

**Saturday 19 February
ORGAN RECITAL**

1.05pm; free
Richard Jenkinson (East Grinstead Parish Church).

St John's Waterloo

Waterloo Road T 020 7633 9819
www.stjohnswaterloo.co.uk

**Every Wednesday
LUNCHTIME CONCERT**

1.10pm; free
Wed 2: Southbank Sinfonia soloists
Wed 9: Southbank Sinfonia soloists
Wed 16: Southbank Sinfonia soloists
Wed 23: to be confirmed

**Every Thursday
RUSH HOUR CONCERT**

6pm; free
Thu 3: Mozart: Symphony No 35 and Beethoven: Symphony No 7. Southbank Sinfonia conducted by Simon Over.

Thu 10: Nielsen: Flute Concerto (soloist Caroline Williams) and Strauss: Horn Concerto No 1 (soloist Alastair Rycroft). Southbank Sinfonia conducted by Colin Metters.

Thu 17: Mozart: Violin Concerto in D (soloist Hao yi Tai) and Mark-Anthony Turnage: Dark Crossing. Southbank Sinfonia conducted by Nicholas Cleobury.
Thu 24: No concert

**Sunday 20 February
THE LONDON GAY SYMPHONY ORCHESTRA**

7pm; £10 (conc £6) on the door or in advance from 07963 853 099
Programme: Wagner: "Die Meistersinger" Overture; Grieg: Piano Concerto in A minor; Piano - John Robson Shostakovich: Symphony No.5 Guest Conductor: Alison Beckett, Leader: Patrick Ardagh-Walter.
Part of www.lgbthistorymonth.org.uk

Southwark Cathedral

London Bridge T 020 7367 6700
www.southwark.anglican.org/cathedral

**Every Monday
ORGAN RECITAL**

1.10pm; free
Mon: 7 Ian Keatley (Westminster Abbey organ scholar)
Mon 14: Norman Harper (St Mary's, Wimbledon)
Mon 21: Peter Wright (Southwark Cathedral)
Mon 28: Martin Ford (Southwark Cathedral organ scholar)

**Every Tuesday
CLASSICAL CONCERT**

1.10pm; free
Tue 1: The Navas Quartet (Trinity College of Music)
Tue 8: Choral Music (Rufus Frowde)
Tue 15: Madrigals (Alexandra Brown, Heloise Pilkington & Siobhan Blake)
Tue 22: No Recital



St Valentine's Day events are marked with a heart.

Church Services**St John's Waterloo**

Waterloo Road T 020 7633 9819
www.stjohnswaterloo.co.uk

Wednesday 9 February
ASH WEDNESDAY
1pm & 7pm
Holy Communion on the first day of Lent.

Southwark Cathedral

London Bridge T 020 7367 6700
www.southwark.anglican.org/cathedral

Tuesday 1 February
CANDLEMAS EVENSONG
5.30pm
Choral Evensong with candlelit procession. Attended by Glaziers' Company.

Wednesday 2 February
CANDLEMAS EUCHARIST
12.45pm
The Presentation of Christ in the Temple.

Wednesday 9 February
ASH WEDNESDAY
12.45pm & 6.30pm
Eucharist with the imposition of ashes.

Wednesday 23 February
CHORAL EVENSONG
5.30pm
Attended by Bermondsey Rotary Club.

St George's RC Cathedral

Lambeth Road T 020 7928 5256
www.southwark-rc-cathedral.org.uk

Wednesday 9 February
ASH WEDNESDAY
7.30am & 12.30pm
Mass on the first day of Lent.

St Mary Magdalen Bermondsey

Bermondsey Street
www.stmarysbermondsey.org.uk

Wednesday 9 February
EVENING SERVICE
8pm
Service for Ash Wednesday.

Colombo Centre

Keep your
New Year
resolution going!

- SE1/SE11/SE17 residents
£27.30 per month.
No minimum contract.
- Gym, Exercise Classes
- NEW from mid February: brand
new FIFA standard outdoor 5-a-
side football pitches
- Badminton
- Indoor football
- Aerobics
- Pilates/Yoga

Colombo Centre
34-68 Colombo Street
London SE1 8DP
020 7261 1658



WATERLOO PROJECT BOARD

SUPPORTED BY
LONDON
DEVELOPMENT
AGENCY

WORKING FOR THE MAYOR OF LONDON

registered as a charity no: 292623

Direct to your inbox every Monday

- Highlights of the week's events
- News from the past seven days
- Exclusive special offers

Sign up now for SE1 Direct - it's free -
at www.SE1direct.co.uk

Plan your 2005 advertising today

**We're the best way to
reach the SE1 audience**

Call our sales desk now
020 7633 0766

sales@inSE1.co.uk

Theatre

Menier Chocolate Factory

51-53 Southwark Street T 020 7907 7060
www.menierchocolatefactory.com

Until Sunday 27 February
THE SMALL THINGS

Tue-Sat 8pm; Sat & Sun 3.30pm; £10
Enda Walsh's play directed by Vicky Featherstone. Two houses perched on top of mountains stare at each other across a deep valley. A man and a woman talk about the small things – parquet floor zigzagging down corridors, the memory of mother's breasts, brown sauce and soggy chips. But these minutiae disguise a bigger story of brutality and unflinching loyalty which emerges horrifically through the chit-chat. First production in the Paines Plough *This Other England* season.

- Post-show discussion on Thursday 17 February
- See behind-the-scenes at the Menier Chocolate Factory: visitors welcome on Wednesday 9 February 11am-3pm

The Old Vic

The Cut T 0870 060 6628
www.oldvictheatre.com

Until Tuesday 1 February to Saturday 23 April
NATIONAL ANTHEMS

Mon-Sat 7.30pm, Wed & Sat 2.30pm; £10-40
British premiere of Dennis McIntyre's new play chronicling the class clash between an affluent couple with social aspirations and the neighbour they grudgingly invite into their home. National Anthems represents a personal choice for Kevin Spacey, who will make his stage debut from the Old Vic Theatre Company in a role he first played in 1988 at Connecticut's Long Wharf Theatre.

Royal National Theatre

South Bank T 020 7452 3000
www.nationaltheatre.org.uk

Until Saturday 26 February
A MINUTE TOO LATE

Lyttelton Theatre; 8pm; £15
A comedy of mourning created 21 years ago. Cast: Jozef Houben, Simon McBurney and Marcello Magni.

Until Saturday 2 April
HIS DARK MATERIALS

Olivier Theatre; 7.15pm; £10-£35
Based on the novels by Philip Pullman. There are two performances of three hours on different nights which must be booked at the same time.

Until Wednesday 23 March
FIX UP

Cottesloe Theatre; 7.30pm; £10-£27
New play by Kwame Kwei-Armah set in Tottenham and London exploring race and roots with wit.

Friday 4 February to Tuesday 29 March
A DREAM PLAY

Cottesloe Theatre; 7.30pm; £10-27
A new version of Strindberg's experiment in surrealism by Caryl Churchill. Coincides with Tate Modern Strindberg exhibition.

The Shunt Vaults

Joiner Street T 020 7452 3000
www.shunt.co.uk

Until Saturday 25 June
TROPICANA

Thu, Fri & Sat 8.30pm; £20 (conc £10)
The audience for this 'live event' is asked to wear clothes suitable for dusty conditions and be ready to move about the vast 70,000 square foot space.

Southwark Playhouse

62 Southwark Bridge Road T 020 7620 3494
www.southwarkplayhouse.co.uk

Until Saturday 12 February
THE TEMPEST

Mon-Sat 7.30pm; £12 (conc & under twelve £8; Mon £6)
Shakespeare's play of thunder and lightning, sea and storms, love, treachery and illusion brought to life. Directed by Tom Wright. Sponsored by the Linbury Trust, Workspace Group plc, and Shell International.

Until Tuesday 15 February to Saturday 5 March
THE SHY GAS MAN

7.30pm; £12 (conc & Mon £8)
A play by Gill Adams presented by Sweetheart productions.

Union Theatre

204 Union Street T 020 7261 9876
www.uniontheatre.com

Until Tuesday 8 February to Saturday 5 March
MARIA STUART

Tue-Sat 7.30pm; £10 (conc £8)
Friedrich Schiller's play translated by Hilary Collier Sy-Quia and Peter Oswald. This year is the bi-centenary of Friedrich Schiller's death. He wrote Maria Stuart in response to the political turbulence caused by the American and French revolutions and offers a disturbing analysis of the problems that arise whenever political expediency masquerades as justice and judges are subjected to the pressures of power politics or ideological conflict. Presented by the London-based Scary Little Girls committed to re-telling well-known stories from a different viewpoint or focusing on little-known tales and characters.

Cinema

BFI London IMAX Cinema

The Bullring, South Bank T 0870 787 2525
www.bfi.org.uk/imax
Screenings daily; 10.30am-9.30pm; £7.90; conc £6.50; child £4.95

BUGS! 3D (U)

A bug's eye view of the fascinating universe of insects, magnified up to 250,000 times their normal size and in 3D.

CYBERWORLD 3D (PG)

Come face to face with your favourite characters as they leap out of Britain's biggest screen.

SPACE STATION 3D (U)

The first ever-live action IMAX movie to

be filmed in space.

MYSTERIES OF EGYPT 2D (U)

Omar Sharif and Kate Maberly explore the latest discoveries and uncover many of the mysteries of Egypt.

EVEREST 2D (U)

Across icefalls and gaping chasms, up towering cliffs, through a harrowing rescue and into the danger zone.

HAUNTED CASTLE 3D (PG)

A 3D visual extravaganza.

INTO THE DEEP 3D (U)

This 3D spectacular takes you into a magical underwater world.

CYBERWORLD (PG)

Come face to face with your favourite characters as they leap out of the screen.

T-REX: BACK TO THE CRETACEOUS 3D (U)

One of the most popular IMAX adventure films.

Until Sunday 6 February
POLAR EXPRESS 3D (U)

Mon-Fri 8pm; Sat 1.30, 5.30 & 8.30pm; Sun 12, 4.30 & 7.30pm; £12.50 (conc £11; child £7.50)
An animation with Tom Hanks. An IMAX 3D Experience. Extended run by popular demand.

Imperial War Museum

Lambeth Road T 020 7416 5320
www.iwm.org.uk

Until Saturday 5 February
THE GREAT ESCAPE

2pm; free
Allied prisoners plan to escape from a German POW camp. Directed by John Sturges with James Garner, Steve McQueen, Richard Attenborough and Donald Pleasance (1963). 173 mins.

Until Sunday 6 February
THE REAL GREAT ESCAPE

2.30pm £5.00, FIWM and concessions £4.00, children £3.00 Pre-booking essential. Box Office 020 7416 5439, boxoffice@iwm.org.uk
Professor Peter Doyle will talk about the first archaeological excavation at the site of Stalag Luft III, the discovery of the tunnel 'Dick', the recovery of artefacts, many of which can be seen in the Great Escapes exhibition, and the impressions of the veterans who visited the site. The talk will be followed by a screening of *The Great Escape*.

Until Thursday 17 February
CHICKEN RUN UNCOVERED

7pm; £7.50, FIWM and concessions £6.00, children £3.50 (includes entrance to the Great Escapes exhibition). Pre-booking essential. Box Office 020 7416 5439, boxoffice@iwm.org.uk
Peter Lord, the co-director of *Chicken Run* (2000) and co-founder of Aardman Animations will introduce and offer behind the scenes information about how the film *Chicken Run* was made. If you have ever wondered what it must be like to direct Mel Gibson as a chicken then this is your chance to find out. In association with Pathé!

National Film Theatre

South Bank T 020 7928 3232
www.bfi.org.uk/nft

Until Tuesday 1 to Monday 21 February
NICOLAS PHILIBERT
Until *Etre et avoir* attained international success, Nicolas Philibert had remained one of French cinema's best-kept secrets. This month, the NFT screens a comprehensive season of films by this compassionate and insightful director.

From Saturday 12 February
VALENTINE'S DAY SPECIAL

A special season of movies including *Breakfast at Tiffany's*, *Brief Encounter*, *Casablanca*, *Far from Heaven*, *Mambo Italiano* and *My Summer of Love*.

Tate Modern

Bankside T 020 7887 8008
www.tate.org.uk

Until Sundays 6 & 27 February
JOSEPH BEUYS FILMS

3pm; £3.50 (conc £2)
Survey of key action films to coincide with Beuys exhibition.

Exhibitions

Advanced Graphics London

32 Long Lane T 020 7407 2055
www.advancedgraphics.co.uk
Mon-Sat 10am-6pm; free

Until Saturday 26 February
MATTHEW RADFORD
Works on Paper.

Arch Gallery

37 The Cut T 020 7928 9888
Mon-Fri 10am-6pm; Sat 11am-5pm; free

Until Thursday 24 February
CHESS GAME
Kiyosuke Itakura.

Bankside Gallery

48 Hopton Street T 020 7928 7521
www.banksidegallery.com
Daily 11am-6pm; free

Until Sunday 20 February
LOVE FOR SALE

A selling exhibition to coincide with St Valentine's Day. Artists include Picasso, Henri Matisse, Gerald Scarfe, Terry Frost and Judy Chicago.

Design Museum

28 Shad Thames T 0870 833 9955
www.designmuseum.org
Daily 10am-6pm (last admission 5.15pm); £6 (conc £4)

Until Sunday 27 February
UNDER A TENNER
15 designers choose ten examples of 'good design' costing less than £10.

Until Saturday 12 February to Sunday 15 May
YOU ARE HERE
The fascinating history of information design.

Until Wednesday 16 February to Monday 25 April
PASSING THE BATON
The conductor's baton reinterpreted by 40 of the world's leading designers.

londonSE1 A month in the life of the London SE1 forum community website

Definitive Curry

Thameslink 2000 and Borough Market

Good food in Waterloo Road

Metro Central Heights

Good clubs in SE1

Cabbies against cycles

Rare postboxes

Pianos

Jubilee Gardens Consultation

Elephant refurb...

Symington House, Deverell Street

Definitive rules on bikes?

SE1 small business accountant

The London Scotia Bar

Badminton

"Shard of glass" - London Bridge Tower

Waterloo Bridge stairs

"Into" Southwark

Architecture Foundation: pointy metal building...

Demise of public loos

South Bank Forum takes up Postal Campaign

Photography Lessons

Any witnesses to car accident on Tanner Street?

Nurseries in Bermondsey

Tabard Square

More Hartley.....

TAS Borough High Street

SE1's Lost Cinemas

Fleurs

Fame Academy comes to SE1?!

Bogus charity collector - river walkway

Lambeth Council moving to Vauxhall?

10 Blackfriars Road

Ev: new Tas restaurant off Hatfields

Where's the best place to live in Shad Thames?

"Shrinking Childhoods" at Tate Modern

SE1, Thames and floods

Murder Back in March 2004

all these topics and many more have been discussed in the past month at
www.London-SE1.co.uk/forum

Until Sunday 27 November
DESIGNING MODERN LIFE
How design has transformed modern life.

Eye Candy Gallery

2a Crucifix Lane T 020 7357 0772
www.eyecandygallery.co.uk
Mon-Sat 10.30am-7pm; free

Tuesday 1 February to Tuesday 31 March
WINTER 2005 EXHIBITION
Abstract and semi-abstract art.

f a projects

1-2 Bear Gardens T 020 7928 3228
www.faprojects.com
Tue-Fri 10am-6pm; Sat 12 noon-5pm; free

Until Saturday 5 March
ARJAN VAN HELMOND
New paintings

Fashion & Textile Museum

83 Bermondsey Street T 020 7403 0222
www.ftmlondon.org
Tue-Sun 10am-4.45pm; £6 (conc £4)

Until July
ZANDRA RHODES: A LIFELONG LOVE AFFAIR WITH TEXTILES
Witness the creative process from Zandra's initial inspiration through to the exotic finished product.

Florence Nightingale Museum

St Thomas' Hospital T 020 7620 0374
www.florence-nightingale.co.uk
Mon-Fri 10am-5pm; weekend 10am-4.30pm; £5.80 (conc £4.20)

Until Saturday 30 April
CALAMITY UNPARALLELED
150th anniversary of the Crimean War.

Gallery 33

33 Swan Street T 020 7407 8668
Mon-Fri 10am-5pm; free

Monday 14 to Friday 25 February
GITTE MOLLER, SHANA, LUIS MILLINGALLY
Gitte Moller's oil on paper and wood. Shana with pencil drawings. Luis Millingally's naive art.

Glass Art Gallery

7 The Leathermarket T 020 7403 2800
www.londonglassblowing.co.uk
Mon-Fri 10am-5pm; free

Until Saturday 5 February
FRAGILE CARGO
The artistry of glassblowers.

Hayward Gallery

South Bank T 020 7960 5226
www.hayward.org.uk
Daily 10am-6pm (Wed 8pm; Fri 9pm); £7 (conc £2-£5) Monday 50% off

Thursday 10 February to Sunday 17 April
AFRICA REMIX
Painting, sculpture, photography, film, from over 60 artists and 25 countries.

Imperial War Museum

Lambeth Road T 020 7416 5320
www.iwm.org.uk
Daily 10am-6pm; free

Until Monday 2 May
WILLIAM ORPEN: POLITICS, SEX AND DEATH
£5 (conc £4; children free)
See review on page 7.

Until May
D-DAY
60th anniversary of D-Day landings.

Until Sunday 31 July
GREAT ESCAPES
£6 (conc £5; child free)
Ingenious and audacious escape attempts by WWII Allied prisoners.

Jerwood Space

171 Union Street T 020 7654 0171
www.jerwoodspace.co.uk
Daily 10am-6pm; free

Thursday 3 to Sunday 13 February
SHOW - 'NUMBER ONE'
Group exhibition of 6 artists.

Thursday 17 February to Sunday 13 March
RADICAL ART
New Painting from the Royal Academy Schools.

Laura Bartlett Gallery

22 Leathermarket Street T 07771 803606
www.laurabartlettgallery.com
Wed-Sat 12-6pm; free

Until Saturday 12 March
ALISON MOFFET & ADAM HUMPHRIES

Llewellyn Alexander Fine Paintings

The Cut T 020 7620 1322
www.llewellynalexander.com
Mon-Sat 10am-7pm; free

Until Tuesday 10 February.
PAINTINGS UNDER £1,000

Monday 14 February to Friday 11 March
MAUREEN JORDAN, FRASER KING
Landscapes of the Dordogne and Californian poppies.

London Fire Brigade Museum

94 Southwark Bridge Road T 020 7587 2894
www.london-fire.gov.uk
Mon-Fri 9am-5pm; free

Monday 14 to Monday 28 February
FIGHTING FIT FOR THE FIRE BRIGADE
Photography exhibition documenting athletic competitions and celebrating the Brigade's sporting activities.

Menier Chocolate Factory Gallery

51 Southwark Street
www.menierchocolatefactory.com
Mon-Sat 10am-6pm; free

Tuesday 1 to Friday 25 February
ALEXANDRA REINHARDT
Work by the late Alexandra Reinhardt, daughter of Max Reinhardt relaunches the gallery as a showcase for the charity Paintings in Hospitals.

Morley Gallery

Westminster Bridge Road T 020 7450 1826
www.morleycollege.ac.uk
Mon-Fri 10am-5pm; free

Until Thursday 10 February
PRIVATE VIEWS: GLIMPSES OF TEXTILE PRACTICE
An exhibition of work by textile artists.

Friday 25 February to Saturday 19 March
SEIBER 100 YEARS
An exhibition celebrating the centenary of the composer, innovative teacher and musician Seiber.

Museum of Garden History

Lambeth Palace Road T 020 7401 8865
www.museumgardenhistory.org
Daily 10.30am-5pm; voluntary fee £3 (conc £2.50)

Tuesday 1 February to Friday 1 April
DEAD RECKONING
Marking the 250th anniversary of Captain William Bligh of Bounty fame who lived in Lambeth Road and is buried next to the museum.

National Theatre

South Bank T 020 7452 3400
www.nationaltheatre.org.uk
Daily 10am-11pm; free

Until Saturday 2 April
RAW MATERIALS
Learn how the NT's workshops brought Philip Pullman's trilogy to the stage.

Monday 7 February to Saturday 5 March
SHOW ME! TELL ME!
Linked to the Unilever series of commissions at Tate Modern, the exhibition shows the extraordinary creativity of children from around the world.

Poetry Library

Royal Festival Hall T 020 7921 0943
www.poetrylibrary.org.uk
Tue-Sun 11am-8pm; free

Until Monday 28 March
A DARKLING PLAIN
New artwork by Stephen Raw.

Purdy Hicks Gallery

65 Hopton Street T 020 7401 9229
www.purdyhicks.com
Mon-Fri 10am-5.30pm (Wed 7pm); Sat & Sun 12 noon-5pm; free

Until Monday 7 February
STEPANEK & MASLIN

Friday 11 February to Monday 7 March
MARIANNITA LUZZATI
Terra de Ninguém (No Man's Land).

Ritter/Zamet

2 Bear Gardens T 020 7261 9510
www.ritterzamet.com
Tue-Sat 10am-6pm; free

Until Saturday 5 March
MORICEAU + MRZYK: ON HER MAJESTY'S SECRET SERVICE

Royal Festival Hall

South Bank T 020 7921 0943
www.sbc.org.uk
Daily 10am-10pm (closed 25 Dec); free

Until Wednesday 2 March
THE IMAGINARIUM
Journey-themed installation about stories and storytelling which features the imaginative interpretations of traditional tales by children from six Lambeth schools.

The Saatchi Gallery

County Hall, Belvedere Road T 020 7928 8195
www.saatchi-gallery.co.uk
Sun-Thu 10am-8pm; Fri & Sat 10am-10pm; £8.75 (conc £6.75)

Until May
THE TRIUMPH OF PAINTING PART 1
See review on page 8.

Southwark Cathedral Refectory

London Bridge
www.southwark.anglican.org/cathedral
Daily 10am-5pm (closed 25 Dec); free

Until Sunday 6 March
DAVID HEPHER
Recent work.

Tate Modern

Bankside T 020 7887 8008
www.tate.org.uk
Daily 10am-6pm (Fri & Sat 10pm); free

Until Thursday 17 February
SHRINKING CHILDHOODS
Outdoor arts installation on the south lawn in collaboration with Peckham-based Kids Company charity.

Until Monday 28 March
BRUCE NAUMAN
Turbine Hall sound installation.

Friday 4 February to Monday 2 May
JOSEPH BEUYS: ACTIONS, VITRINES, ENVIRONMENTS
German artist considered one of the most influential figures in contemporary art.

Thursday 17 February to Sunday 15 May
AUGUST STRINDBERG: PAINTER, PHOTOGRAPHER, WRITER
A prolific writer of novels and plays and a radical painter of his time.

the.gallery@oxo

Oxo Tower Wharf T 020 7401 2255
www.oxotower.co.uk
Daily 11am-6pm; free

Until Sunday 6 February
FACE TO FACE
Turning documentary photography on its head, here are images of the events of Red Cross youth support from the subjects themselves.

Thursday 10 to Sunday 27 February
ART OF LOVE
Londonart.co.uk's showcase of contemporary art inspired by the theme of love. Available to buy - prices £100-£6,500. Work is selected by panel of judges including Poet Laureate Andrew Motion. Also 10 to 20 February in the Bargehouse.

The Walk

23 King Edward Walk T 020 7928 3786
www.walkgallery.com
Mon-Fri 10.30am-6.30pm

Monday 7 to Friday 25 February
THE LONDON GROUP: IN SEARCH OF A THEME 1
Mark Ainsworth, Jeff Dellow, Marcelle Hanselaar, Tricia Gillman.

The Well Gallery

London College of Communication, Elephant & Castle
www.lcc.arts.ac.uk
Mon-Fri 10am-6pm; free

Monday 14 to Friday 25 February
LIQUID LIGHT & SILICON DREAMS
Peter Cannings (digital media), Graham Diprose (photography) and Peter Layton of Leathermarket-based London Glassblowing have combined their unique talents and skills to produce an inaugural collection of evocative and original prints.

St Patrick's
Montessori Nursery School

Caring for children
from 3 months to 5 years
Open weekdays all year
from 8am to 6pm
Please come and have a look around
or call for a brochure

91 Cornwall Road, London SE1 8TH
(2 minutes from Waterloo Station)
phone: 020 7928 5557
fax: 020 7928 5557
email: mail@stpatricksnursery.com
website: www.stpatricksnursery.com

**[SE1 Direct]**

Weekly email updates

www.SE1direct.co.uk

PSYCHOTHERAPY & MASSAGE

Fully qualified and experienced therapists, based at 'Space to Be', the holistic clinic two minutes from Borough Market.

Hartmut Wuebbeler

UKCP registered Biodynamic Psychotherapist
MTI registered massage practitioner

07905 310312

hart-wue@dircon.co.uk

bigvan.com
moving + storage

Thousands of satisfied clients have discovered
moving can be painless

- Quick and easy moves
- Expertise with antiques and objects d'art
- Packing service
- Storage arranged

020 7708 0993
office@bigvan.co.uk

EXHIBITION REVIEW

William Orpen

Until Monday 2 May
Imperial War Museum

A major retrospective of the artist William Orpen opens at the Imperial War Museum.

An Irishman, he was knighted in 1918. Orpen achieved such success with his portraits of the establishment that by his death in 1931 he was the country's most famous painter. An official role of war artist in the First War however, left a powerful grip on the last years of his life: he became increasingly disillusioned with politicians, although a fine portrait of Churchill in 1916 does justice to them both. Like many Edwardian artists, Orpen quickly became eclipsed by the Modernists. Here is a fascinating opportunity to assess the achievements of one whose "failure to describe what he felt most deeply" (Rothenstein) was perhaps inevitable for such a divided man.

CRYSTAL LINDSAY

LOCAL HISTORY

1929 Kennington bicycle joins museum collection

An Evans bicycle purchased in Kennington Road in 1929 is the latest vehicle to join the collection at London's Transport Museum.

The recent donation is from 95-year-old William Wagstaff who bought the bike in 1929 and has finally decided to give up cycling.

Mr Wagstaff purchased the bicycle when he was 20 years old from FW Evans in Kennington Road on 14 May 1929. For many years he was a member of the Cyclists' Touring Club and his spare time was spent cycling all over the country. The bicycle is still in full working order despite having covered thousands of miles.

In 1938 he married and moved to Shirley in Croydon. During World War II he commuted on the bicycle to the Bermondsey telephone exchange



where he worked as an engineer. The museum has also been given the original Black Lucas 'Silver King' cycle lamp Mr Wagstaff used during this period, still half covered with hand-made blackout paper.

FW Evans no longer makes bicycles but it has a burgeoning chain of retail stores, including branches in The Cut, Waterloo Road and London Bridge. The original Kennington Road shop is now occupied by the Cam Pharmacy.

London's Transport Museum in Covent Garden is about to begin a major redevelopment which will see the museum expand its displays to include the River Thames, cycling and congestion charging as well as buses, trams and the Underground.



Borough and Bankside Community Council

Monday 28 February – 7:00pm
Charles Dickens School, Lant Street SE1

Have your say at our next meeting when we will be talking about the Future Plans for West Bermondsey, Recycling in Borough, Work of Street Action Team and much, much more.....

Visit our website www.southwark.gov.uk or phone 020 7525 7514



londonSE1 Read the full community website story online

www.London-SE1.co.uk

12-storey block in Waterloo Road
Planning permission has been won for a 12-storey building on 284-306 Waterloo Road near St George's Circus.

60 years on: Holocaust recalled at Soviet War Memorial
Holocaust Memorial Day has been marked with a ceremony at the Soviet War Memorial in Geraldine Mary Harmsworth Park.

Michael Howard visits training centre
Conservative Party leader Michael Howard came to Southwark to meet staff and clients at the Gateway Centre in Lancaster Street.

Cash for essential cathedral repairs
SE1's two cathedrals have been awarded grants of £31,000 by English Heritage to enable essential work to take place as part of the £1 million of grants for repairs to cathedrals in England.

Lottery boost for Fire Brigade Museum
The London Fire Brigade Museum in Southwark Bridge Road will be mounting an exhibition to celebrate the part played by those on the home front during WWII thanks to £10,000 from the Big Lottery Fund.

Delia Smith sells South Bank-based publishing company
Delia Smith has sold New Crane Publishing, the Upper Ground-based magazine company she founded with her husband Michael Wynn-Jones to Seven Publishing in a multi million pound deal.

New Bishop of Woolwich returns to Borough High Street
The Venerable Christopher Chessun - who worked in a Borough High Street solicitors' office 30 years ago - has been appointed Area Bishop of Woolwich.

TfL promises better cycle safety on London's bridges
A new road layout for cyclists is to be introduced on Blackfriars Bridge in response to the death of Vicki McCreery in May 2004.

RV1 emission-free bus trial "a great success"
Initial tests of zero-emission buses on route RV1 have been a success, Transport for London announced.

Honours for SE1 schools
Many of SE1's schools have been recognised in Ofsted's new 'honours list' of particularly successful institutions - and Notre Dame School is one of the elite group to be listed twice.

Blaze at Southwark fire training centre
Firefighters were called to Southwark Bridge Road to tackle a blaze at the London Fire Brigade's own training centre.

Aladdin audiences raise over £16,000 for Tsunami appeal
Audiences of 'Aladdin' at the Old Vic have been taking time to remember the thousands that are suffering following the Asian Tsunami.

GUY'S &
St THOMAS' CHARITY

Guy's and St Thomas' **NHS**
NHS Foundation Trust

Public Exhibition

at

Central Hall of St Thomas' Hospital

- Saturday 5 February . . 1pm – 5pm
- Monday 7 February. . . 2pm – 8pm
- Tuesday 8 February. . . 2pm – 8pm

A New Vision for Founder's Place

Guy's and St Thomas' Charity, together with Guy's and St Thomas' NHS Foundation Trust and the Evelina Family Trust, are bringing forward proposals for a healthcare-led regeneration of Founder's Place, opposite St Thomas' Hospital. The proposals include:

- Key worker accommodation for NHS staff including nurses, therapists and other key staff, plus a 102-place nursery for Trust staff
- Ronald McDonald House, which will provide free accommodation for some of the families of children receiving treatment in the new Evelina Children's Hospital
- A brand new health facility, incorporating a patient hotel
- New accommodation for the Charity's long-term tenants who currently live on the site in Canterbury and Stangate houses
- A mix of private and affordable residential accommodation

We are holding an exhibition to enable local residents and other interested parties to find out about (and view a model of) the proposals in advance of a planning application being submitted.

Members of the development team will be on hand to answer questions and explain the proposals in more detail.

If you would like any further information, or to comment on our proposals, please contact: Samantha Sen on FREEPHONE 0800 783 0120 or at samantha.sen@ppsgroup.co.uk.

EXHIBITION REVIEW

The Triumph of Painting

Until May at the Saatchi Gallery, County Hall, Belvedere Road
Book online at www.inSE1.co.uk/saatchi



It's hard to know quite what to make of *The Triumph of Painting*. "No self-respecting public gallery could put on a show like this, with no theme, no intellectual agenda, and a very rum load of stuff" wrote Tom Lubbock in *The Independent*.

This is part one of a three-part survey of contemporary painters. Martin Kippenberger, Peter Doig, Marlene Dumas, Luc Tuymans, Jorg Immendorff and Hermann Nitsch are the established artists featured in the first installment, on show till May. The next two parts will showcase younger artists.

The Saatchi Gallery's County Hall home is a warren of corridors and small rooms, many containing a single painting. The fireplaces, clocks and other reminders of the building's previous role as the home of London's government provide a refreshing antidote to the relentless white walls of Tate Modern.

The lack of a floorplan or signage means that it's quite fun to wander around and discover unexpected corners. Sadly the £9 admission fee means that taking a casual stroll round the gallery is out of the question.

•See listing on page 6.

BOOK REVIEW

Mary Wollstonecraft

Lyndall Gordon • Little, Brown • £25
Buy online at www.inSE1.co.uk/books

A welcome new biography of Mary Wollstonecraft has appeared just months after Southwark Council honoured her with a blue plaque.

The plaque is in Dolben Street where, as the book points out, there are a couple of Georgian frontages known to Mary who lived there from 1788 to 1791. Lyndall Gordon gives a fascinating glimpse of life there with a street organ playing below Mary's window.

Almost every afternoon she crossed the bridge to visit Joseph Johnson at his bookshop near St Paul's Cathedral. Dinner on Sundays was there at five o'clock in an upstairs room where other guests included Thomas Paine. Afterwards she returned home alone with only the occasional oil lamp to break the darkness.

Johnson was her patron,

paying her rent, publishing her work and allowing her equal status at his table. His behaviour was as revolutionary as her own. Her time in Dolben Street was a turning point in her life. From the street she publicly replied to Edmund Burke and collaborated with her illustrator and near neighbour William Blake.

Gordon even hints that her great work *The Vindication of the Rights of Women* may have been born in Dolben Street. It was published shortly after she moved to rural Bloomsbury.

The choice of Southwark for her base was brave for only four years earlier she had assisted her sister in fleeing from her cruel shipwright husband in Bermondsey.

This new trawl through Wollstonecraft's life will enthral many in Southwark and beyond.